

EXISTING CONDITION NOTES

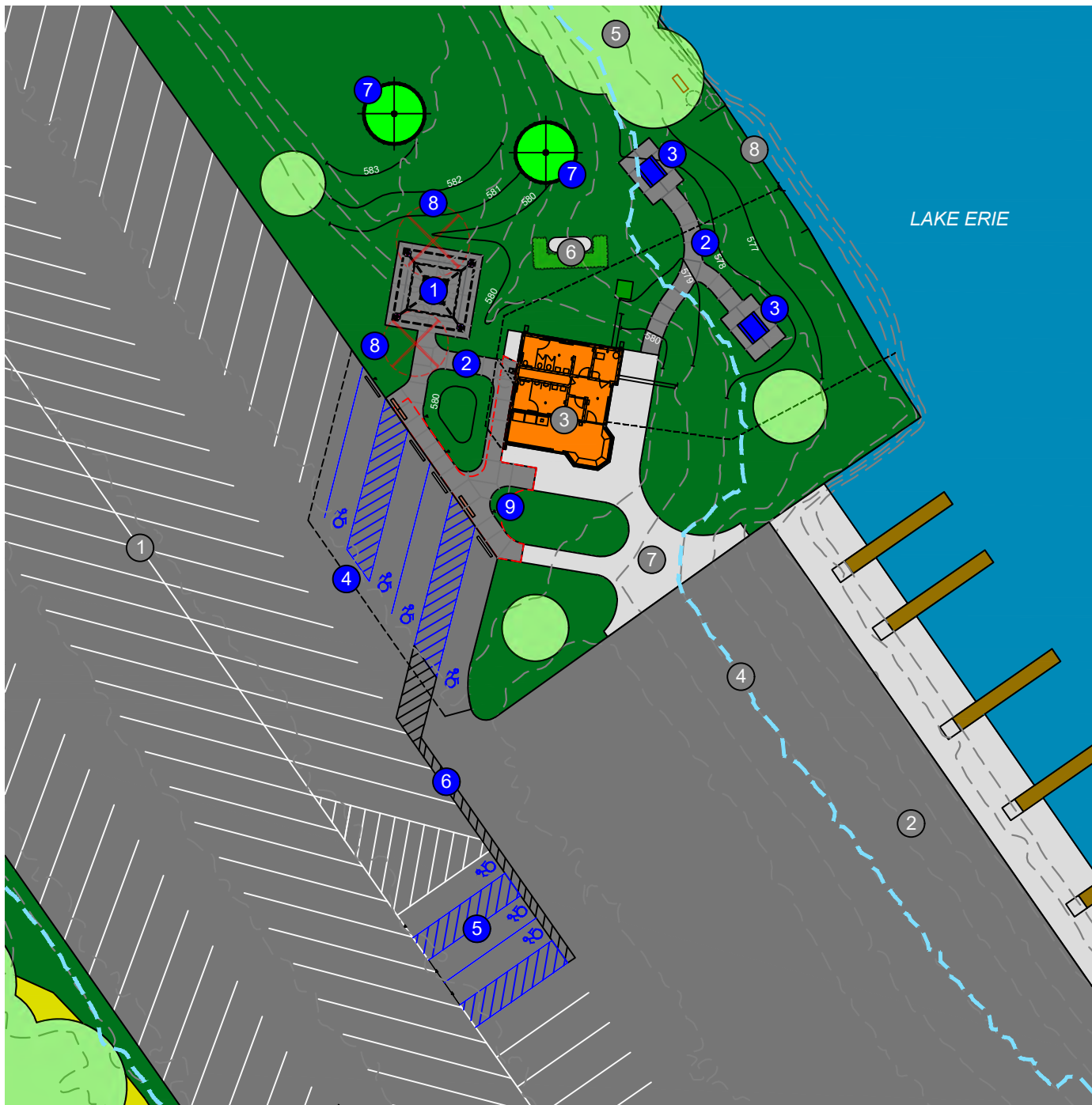
- ① TRAILER PARKING, 154 CARS
- ② OVERFLOW PARKING LOT, 30 CARS
- ③ BOAT LAUNCH RAMPS
- ④ BOAT LAUNCH BUILDING
- ⑤ MOWED TURF
- ⑥ TREES
- ⑦ NO MOW / WETLAND AREAS
- ⑧ CHERRY ISLAND NATURE TRAIL
- ⑨ LAKE ERIE FLOODPLAIN ELEVATION

PARKING NOTES:

- 154 EXISTING PARKING SPACES (PAVED LOT ONLY)
- 184 EXISTING PARKING SPACES IF THE AGGREGATE OVERFLOW "CAR ONLY" LOT WERE TO BE INCLUDED IN THE TOTAL
- 6 ACCESSIBLE PARKING SPACES REQUIRED FOR A LOT SIZE BETWEEN 151-200 CARS. 1 SPACE MUST BE VAN ACCESSIBLE.
- 7 PROPOSED ACCESSIBLE SPACES. ALL 7 SPACES TO BE STRIPED AND SIGNED AS VAN ACCESSIBLE WITH THE NEW DYNAMIC ADA SYMBOL USED ON SIGNS AND PAVEMENT. SPACE WIDTH SHALL BE 8' MINIMUM. AISLE WIDTH SHALL BE 8' MINIMUM. A STRIPED ACCESSIBLE ROUTE OR 6' MINIMUM WIDTH CONCRETE WALK SHALL PROVIDE ACCESS TO THE BOAT LAUNCH RESTROOM BUILDING AND PROPOSED FISH CLEANING STATION.

EXISTING CONDITIONS / PARKING LOT PLAN

TF26-0009 Fish Cleaning Station Development - Lake Erie Metropark



EXISTING CONDITION NOTES

- ① TRAILER PARKING, 154 CARS
- ② BOAT LAUNCH RAMPS
- ③ BOAT LAUNCH BUILDING
- ④ FLOODPLAIN ELEVATION
- ⑤ TREES
- ⑥ PROPANE TANK / SHRUBS
- ⑦ CONCRETE WALKS
- ⑧ SHEET PILE WALL

PROPOSED WORK

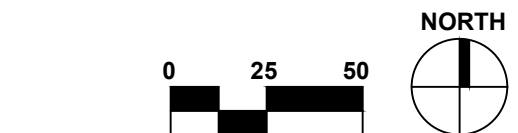
- ① FISH CLEANING STATION SHELTER
- ② UNIVERSAL WALK, 6' MIN. WIDTH, 5% MAX. SLOPE AND 2% MAX. RUNNING SLOPE. TACTILE WARNING STRIPS AT ACCESSIBLE VAN AISLES.
- ③ UNIVERSAL PICNIC TABLE, 8' LONG, WHEELCHAIR ACCESS ON BOTH ENDS, ADA STICKERS AT ENDS
- ④ ASPHALT PAVEMENT RESURFACING, STRIPING, AND SIGNS AT 4 VAN ACCESSIBLE SPACES (WHITE DASHED LINE). ADJUST EXIST. CONCRETE PARKING BLOCKS.
- ⑤ STRIPING AND SIGNS AT 3 VAN ACCESSIBLE SPACES
- ⑥ ACCESSIBLE ROUTE STRIPING
- ⑦ NATIVE TREE PLANTINGS, 2 TOTAL
- ⑧ REMOVE TREE, 2 TOTAL
- ⑨ REMOVE PAVEMENT (91 SY) (RED DASHED LINE)

UTILITY NOTES

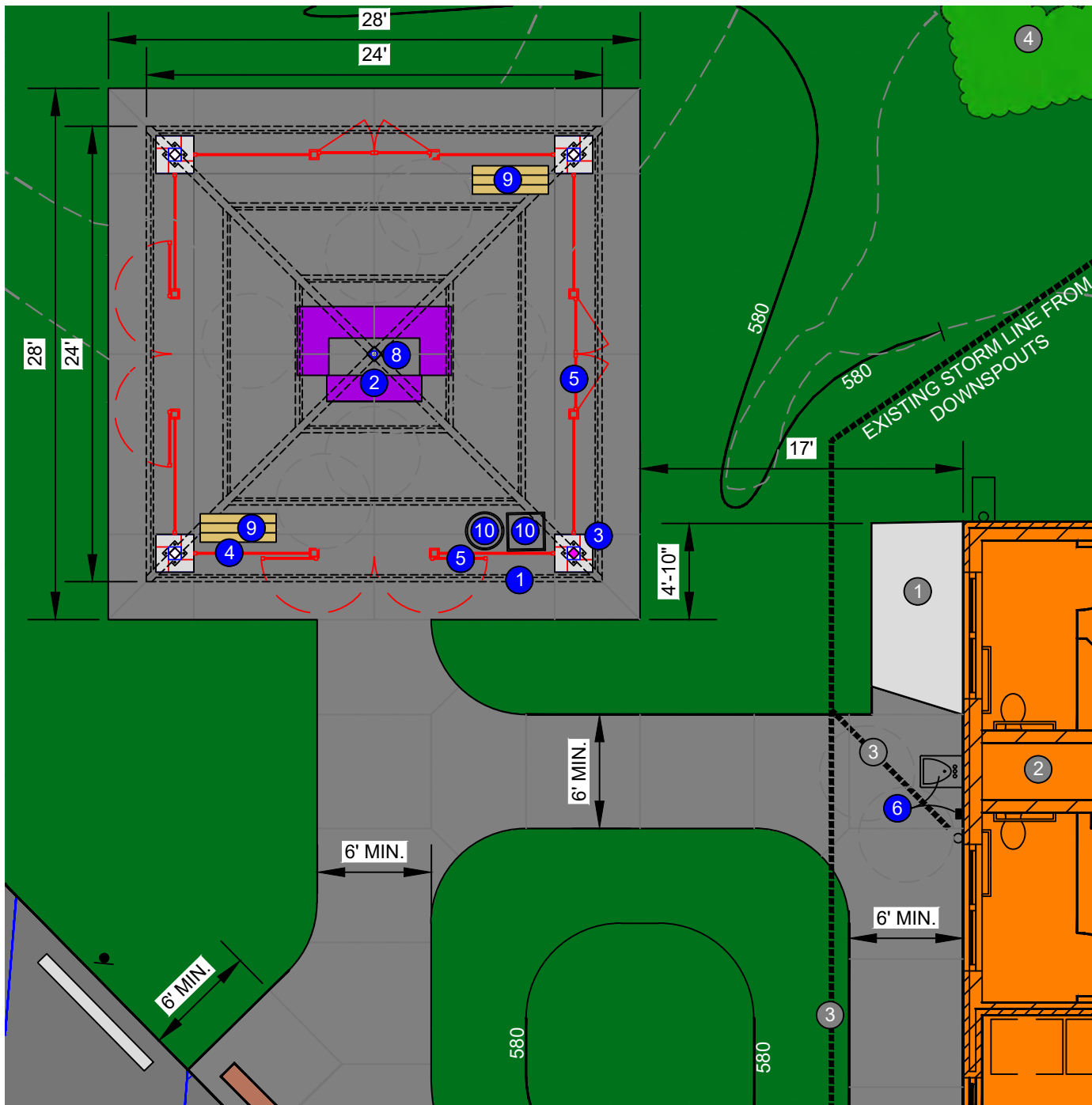
- ALL UTILITY WORK IS NOTED ON SHEETS 4 & 5

PROPOSED SCOPE OF WORK

TF26-0009 Fish Cleaning Station Development - Lake Erie Metropark



February 2026 2 OF 5



EXISTING CONDITION NOTES

- ① CONCRETE WALK
- ② BOAT LAUNCH BUILDING RESTROOM UTILITY CHASE
- ③ DRAIN TILE TO DOWNSPOUTS
- ④ PROPANE TANK / SHRUBS

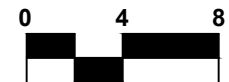
PROPOSED WORK

- ① 24' X 24' FISH CLEANING STATION SHELTER ROOF STRUCTURE (BLACK DASHED LINES). COLORS TBD.
- ② BARRACUDA FISH CLEANING STATION WITH 4 WORK STATIONS. THE ACCESSIBLE WORK STATION HAS A LOWERED HEIGHT. CENTER UNDER SHELTER WITH 5' MINIMUM CLEARANCE ON ALL SIDES.
- ③ MASONRY COLUMNS AT ALL FOUR POSTS, MATCH COLOR OF BUILDING.
- ④ ORNAMENTAL FENCING TO SECURE FACILITY SEASONALLY.
- ⑤ ORNAMENTAL SWING GATES ON ALL SIDES. TWO ARE SHOWN OPEN.
- ⑥ ACCESSIBLE SINK AND HAND SANITIZER DISPENSER TO BE MOUNTED TO BOAT LAUNCH BUILDING AT UTILITY CHASE SPACE.
- ⑦ FLOOR DRAIN AND SEWER LINE, SEE UTILITY PLAN
- ⑧ TWO 4' BACKLESS BENCHES
- ⑨ OWNER SUPPLIED TRASH CAN AND RECYCLE BIN

NOTES FOR ITEMS NOT SHOWN:

- (4) OVERHEAD CEILING LIGHTS,
- (4) ELECTRICAL OUTLETS AT SHELTER COLUMNS, (1) CEILING FAN, (1) HOSE BIB, AND SAFETY SIGNS TO BE INSTALLED

NORTH

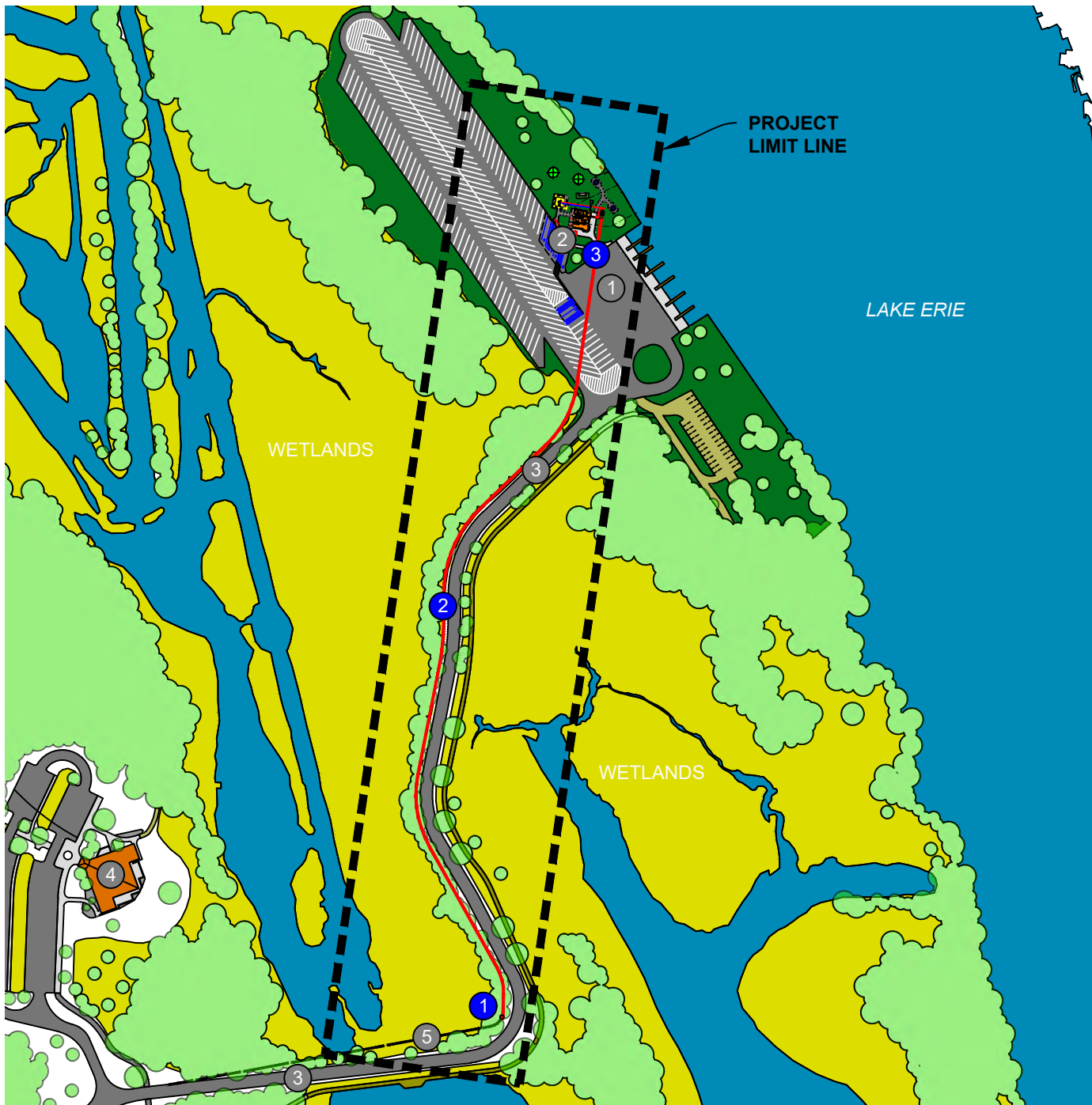


FISH CLEANING STATION SHELTER ENLARGEMENT

TF26-0009 Fish Cleaning Station Development - Lake Erie Metropark

February 2026

3 OF 5



EXISTING CONDITION NOTES

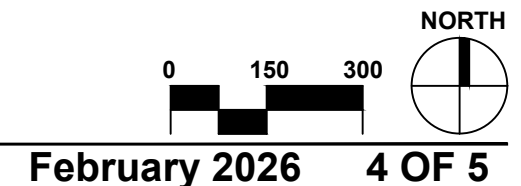
- ① BOAT LAUNCH
- ② BOAT LAUNCH BUILDING
- ③ PARK ROAD
- ④ MARSHLANDS MUSEUM
- ⑤ SEWER LINE

PROPOSED WORK

- ① SEWER LINE CONNECTION POINT NEAR THE SHARP TURN ALONG THE PARK ROAD
- ② SEWER LINE, 1,720 LF. THE LINE SHALL BE BORED UNDERGROUND. LINE TO REPLACE AN EXISTING 2" LINE. THE NEW SEWER LINE WILL CONNECT THE EXISTING LIFT STATION AT THE BOAT LAUNCH BUILDING TO A RECENTLY REPLACED SECTION OF SEWER LINE INSTALLED IN 2023.
- ③ SEE SHEET 5 FOR UTILITY WORK NEAR THE BOAT LAUNCH BUILDING AND PROPOSED FISH CLEANING STATION

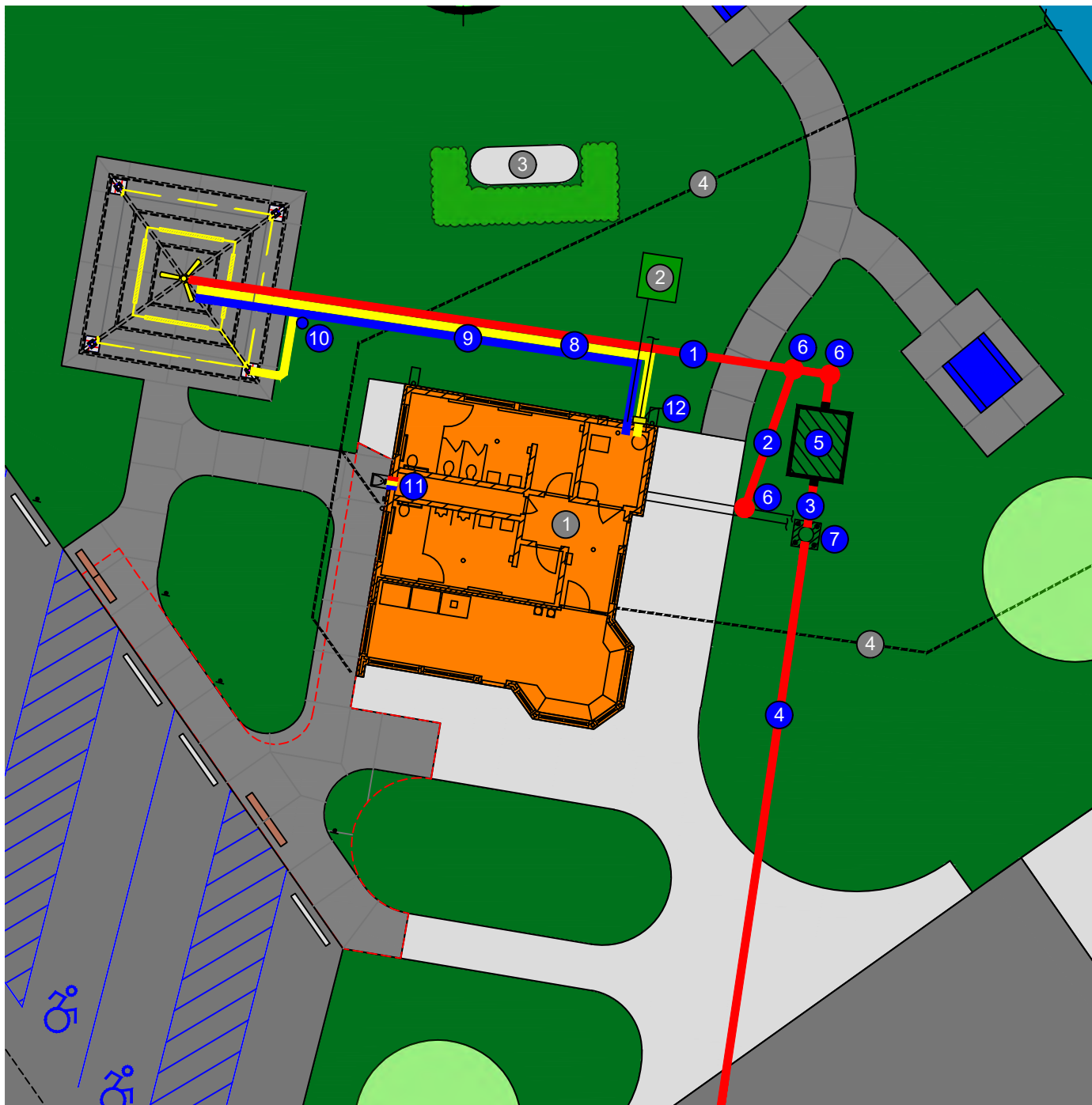
OVERALL UTILITY PLAN / PROJECT LIMITS

TF26-0009 Fish Cleaning Station Development - Lake Erie Metropark



February 2026

4 OF 5



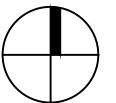
EXISTING CONDITION NOTES

- ① BOAT LAUNCH BUILDING
- ② ELECTRICAL TRANSFORMER
- ③ PROPANE TANK
- ④ STORM LINE

PROPOSED WORK

- ① SEWER LINE 90LF, FISH CLEANING STATION TO PROP. SETTLING TANK
- ② SEWER LINE 25LF, REPLACE / RELOCATE LINE TO BOAT LAUNCH BUILDING
- ③ SEWER LINE 10LF, SETTLING TANK TO EXISTING LIFT STATION
- ④ SEWER LINE, BORE NEW LINE UNDERGROUND TO A LOCATION 1,720 LF SOUTH, SEE SHEET 4 FOR POINT OF CONNECTION
- ⑤ 2,000 GALLON SETTLING TANK WITH FILTER
- ⑥ CLEAN-OUT, WHERE REQUIRED
- ⑦ REPLACE BOTH GRINDER PUMPS AND THE CONTROLLER AT THE EXISTING SETTLING TANK
- ⑧ ELECTRICAL LINE, BOAT LAUNCH BUILDING TO (4) UTILITY OUTLETS AT SHELTER COLUMNS, (4) CEILING LIGHTS, AND (1) CEILING FAN
- ⑨ WATER LINE, BOAT LAUNCH BUILDING TO BARRACUDA FISH CLEANING STATION
- ⑩ HOSE BIB, FOR CLEANING PVMT.
- ⑪ WATER, ELECTRICAL, AND SEWER LINE CONNECTIONS TO SINK ATTACHED TO BRICK WALL AT THE BUILDING'S UTILITY CHASE SPACE
- ⑫ EMERGENCY SHUTOFF AND DISCONNECT

NORTH



UTILITY PLAN - ELECTRIC, SEWER, & WATER

TF26-0009 Fish Cleaning Station Development - Lake Erie Metropark

February 2026

5 OF 5