



A portion of the existing boardwalk shall be removed allowing this walkway to be extended towards an accessible picnic area.



The extended walkway and proposed asphalt trail will connect this walk, the boardwalk, and the picnic shelter in the distance.



This ramp section with handrail will be removed. The renovated boardwalk will ramp down meeting the extended concrete walk.



View of boardwalk looking east. The ramp connection to the boardwalk will be removed.





5

Existing stair & portion of boardwalk to be removed. Boardwalk will ramp down prior to a new extended concrete walk.



6

A new paved walk (hike-bike trail) will connect the West Beach Shelter to the boardwalk and restroom building in the distance.



7

The hike-bike trail will be extended in the future and will follow this service drive west to the Daysail parking lot.



8

The service drive (haul route to clean the beach) will be moved and cross the hike-bike trail in a new location.





9

Site amenities at the shelter will be replaced with universal accessible amenities. Sign to be removed.



10

The grill will be replaced with a large universal accessible swivel grill. The concrete will be extended for improved access.



11

Universal accessible tables with seating on two ends to be added and secured to pavement to ensure accessibility.



12

The dog waste station shall be moved to an accessible location.





13

Three hot coal barrels (smaller unit) shall be placed in accessible locations, one near each of the three proposed accessible grills.



14

Three new universal accessible grills will be added meeting the 2 / 20% rule for accessible features.



15

Existing viewing scope to be replaced with an accessible unit with two viewing scopes, one at wheelchair height.



16

Existing boardwalk to be renovated with new deck boards and railings or wheelchair guards.





The existing boardwalk lighting shall be removed and will be replaced with solar edge lighting.



Boardwalk decking and side skirting design to be determined. The existing boardwalk piles shall remain and be built upon.



Boardwalk height varies. Deck heights above 30" require guardrails. Guardrail design to be determined. Integral railing lighting is being considered as an alternate to solar lights.



Existing benches to be removed. Seating options are proposed with adjacent companion wheelchair spaces. Universal accessible boardwalk tables shall have seating on both ends.

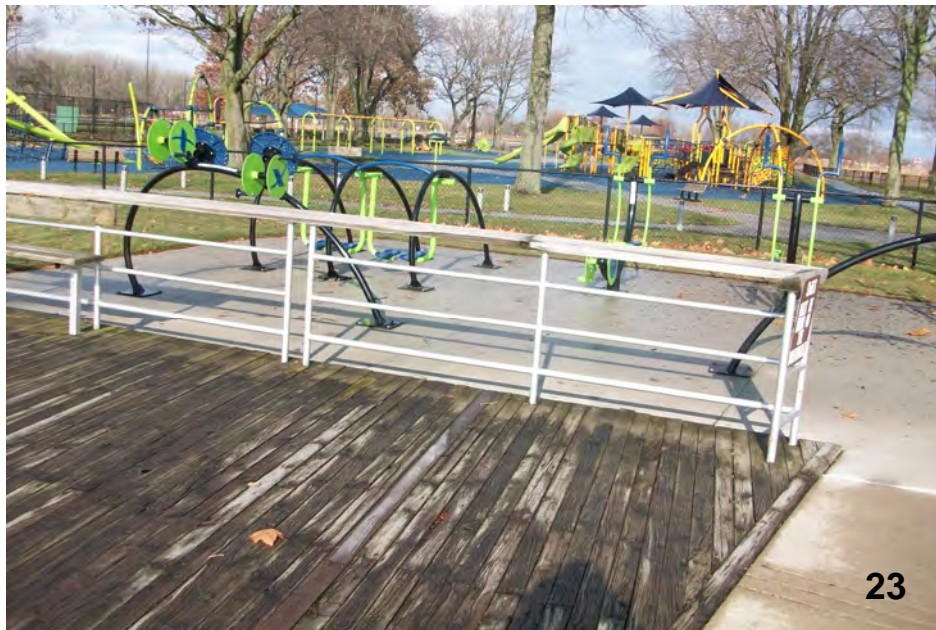




The existing ramp railings shall be removed. A walk with a reduced 5% maximum slope (7.8% existing) is proposed.



A stairway shall be added opposite this ramp providing improved access to the turf and waterfront.



The railing separating the fitness equipment and boardwalk shall be replaced. Fixed seating attached to the railings will be removed.



The east end of the boardwalk will remain flush with the existing concrete pavement. The boardwalk shall be designed for maintenance vehicle access.





25

Improvements along the existing walk will improve access to the sand volleyball courts, beach, and water.



26

A concrete ramp is proposed providing improved wheelchair access into the sand volleyball court area.



27

Dog waste stations shall be relocated to accessible locations.



28

Concrete pavement shall be removed near the waters edge. An accessible beach mat will provide wheelchair access onto the sand and into the water.





29

Ten ADA spaces shown in lot "B". Three others not pictured. One aisle not striped. To be corrected by HCMA in Spring 2022.



30

Striped cross walks, ramps, and accessible routes currently exist to the project site from multiple accessible parking locations.



31

Three accessible spaces shown above in lot "A".



32

Two additional spaces shown above in lot "A". There are two more spaces at the opposite end of the lot that provide hike-bike trail access (no photo). Seven ADA spaces total in lot "A".

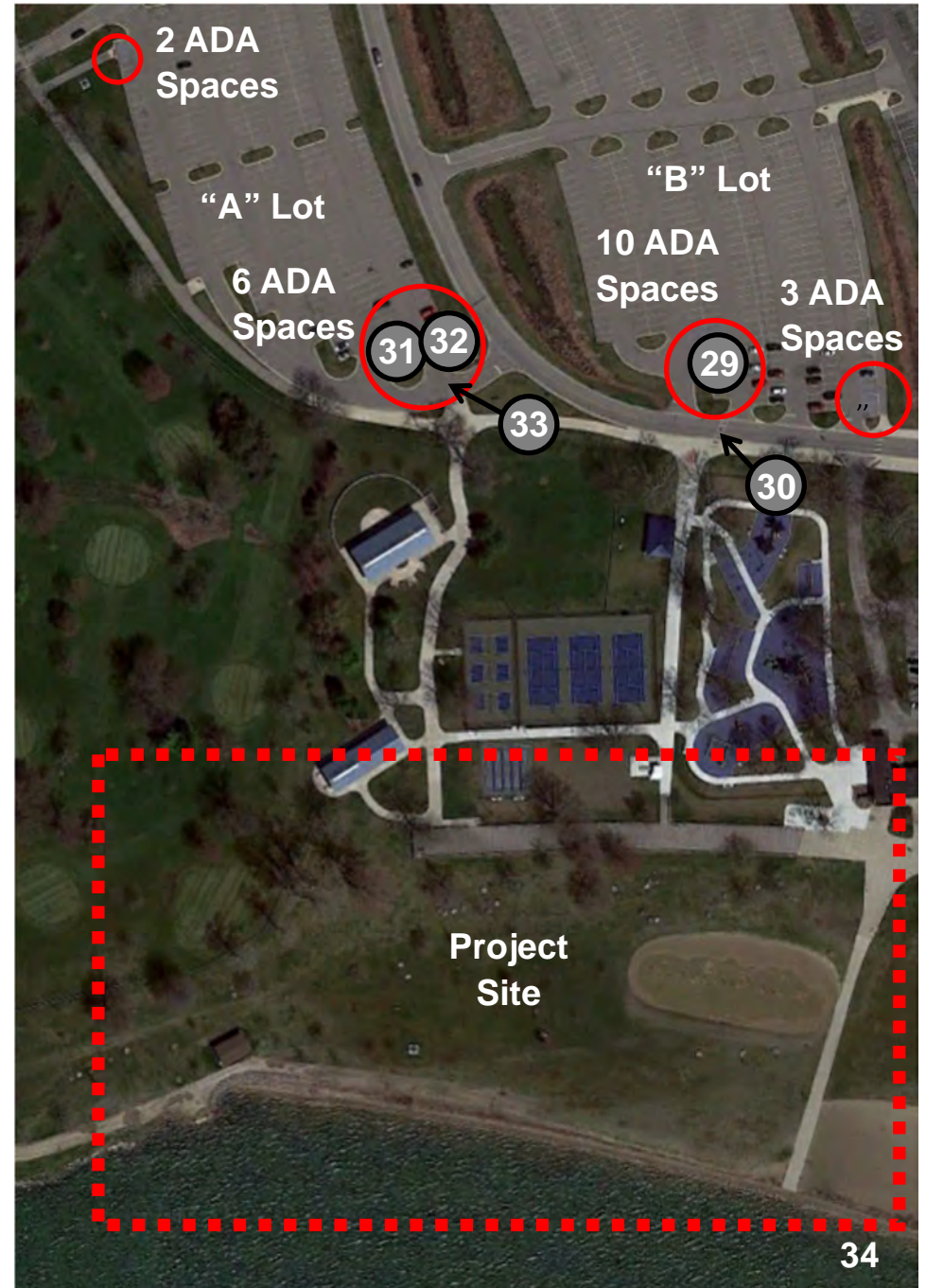




Striped cross walks, ramps, and accessible routes currently exist to the project site from multiple accessible parking locations.

“A” lot has 314 parking spaces requiring eight ADA Spaces. Eight accessible parking spaces provided.

“B” lot has 574 parking spaces requiring twelve ADA Spaces. Thirteen accessible parking spaces provided. Two of the spaces lack a striped access aisle between them and that will be corrected by HCMA staff in the Spring of 2022, see photo 29.



Photos 27-33 are shown on map above. Accessible parking totals meet or exceed ADA requirements at this time.