



EXISTING CONDITION NOTES

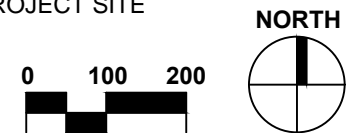
- ① BOARDWALK, 32' WIDE
- ② CONCRETE RAMP TO BOARDWALK
- ③ BOARDWALK STEPS
- ④ CONCRETE WALKS
- ⑤ SHUFFLEBOARD COURTS
- ⑥ TENNIS COURTS
- ⑦ PICKLEBALL COURTS
- ⑧ SAND VOLLEYBALL COURTS
- ⑨ BEACH
- ⑩ WEST BEACH PICNIC SHELTER
- ⑪ PLAYGROUND
- ⑫ RESTROOM FACILITIES
- ⑬ SCATTERED PICNIC TABLES
- ⑭ EXISTING TREES
- ⑮ PAR-3 GOLF STARTER BUILDING
- ⑯ PAR-3 GOLF COURSE
- ⑰ PAR-3 PICNIC SHELTER
- ⑱ ACCESSIBLE ROUTE TO PARKING
- ⑲ SHORELINE / BEACH HAUL ROUTE

NOTE:

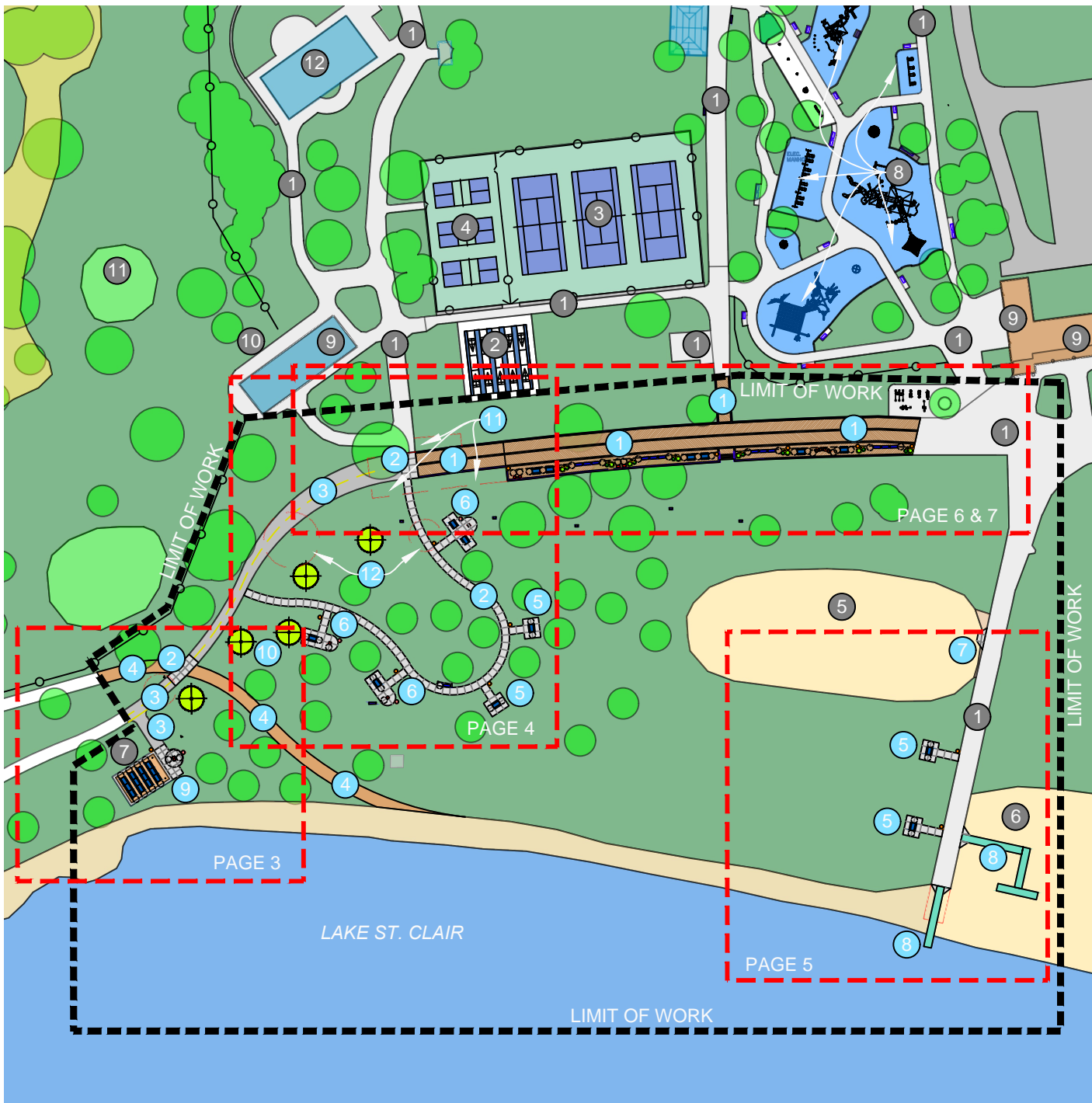
THE TWO CLOSEST PARKING LOTS ARE THE 314 CAR LOT "A" NEAR THE PAR-3 PICNIC SHELTER AND THE 574 CAR LOT "B" NEAR THE PLAYGROUND.

- LOT "B" HAS 8 ACCESSIBLE SPACES.
- LOT "C" HAS 13 ACCESSIBLE SPACES.

BOTH LOTS HAVE ACCESSIBLE ROUTES TO THE PROJECT SITE



EXISTING CONDITIONS PLAN



EXISTING CONDITION NOTES

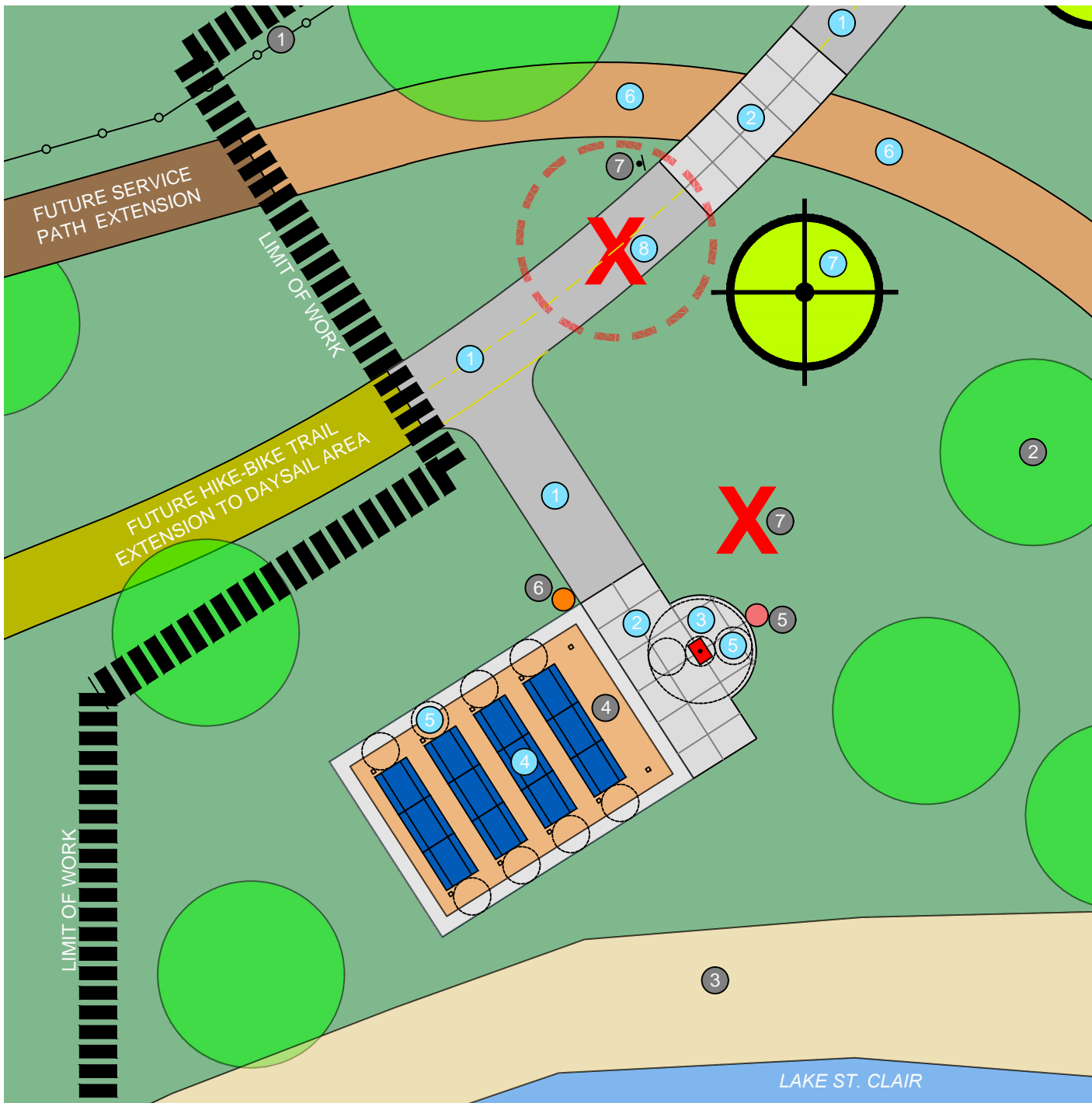
- ① CONCRETE WALKS
- ② SHUFFLEBOARD COURTS
- ③ TENNIS COURTS
- ④ PICKLE COURTS
- ⑤ SAND VOLLEYBALL COURTS
- ⑥ BEACH
- ⑦ WEST BEACH PICNIC SHELTER
- ⑧ PLAYGROUND
- ⑨ RESTROOM FACILITIES
- ⑩ PAR-3 GOLF STARTER BUILDING
- ⑪ PAR-3 GOLF COURSE
- ⑫ PAR-3 PICNIC SHELTER

PROPOSED WORK

- ① UA BOARDWALK IMPROVEMENTS
- ② UA CONCRETE PAVEMENT, 6' MIN. WIDTH
- ③ UA ASPHALT PATH, 6' MIN. WIDTH
- ④ AGGREGATE SERVICE DRIVE
- ⑤ UA PICNIC SITE W/ TABLE ONLY
- ⑥ UA PICNIC SITE W/ TABLE & GRILLS
- ⑦ UA SAND VOLLEYBALL ACCESS
- ⑧ UA BEACH & WATER ACCESS
- ⑨ UA SHELTER IMPROVEMENTS WITH TABLE, GRILL & PAVEMENT ADDITIONS
- ⑩ NATIVE TREE PLANTINGS, 5 TOTAL
- ⑪ REMOVE BOARDWALK, STAIR & CONCRETE RAMP AREA
- ⑫ TREE REMOVALS, AS NEEDED



PROPOSED SITE PLAN



EXISTING CONDITION NOTES

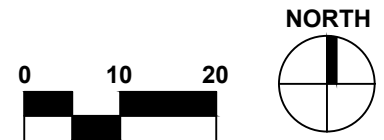
- ① SPLIT RAIL FENCE AT GOLF COURSE
- ② SHADE TREES
- ③ SHORELINE / BEACH HAUL ROUTE
- ④ WEST BEACH PICNIC SHELTER
- ⑤ HOT COAL BARREL, MOVE TO AN ACCESSIBLE LOCATION
- ⑥ TRASH CAN, MOVE TO AN ACCESSIBLE LOCATION
- ⑦ SHELTER SIGN TO BE REMOVED, DOG WASTE STATION TO BE MOVED TO AN ACCESSIBLE LOCATION

PROPOSED WORK

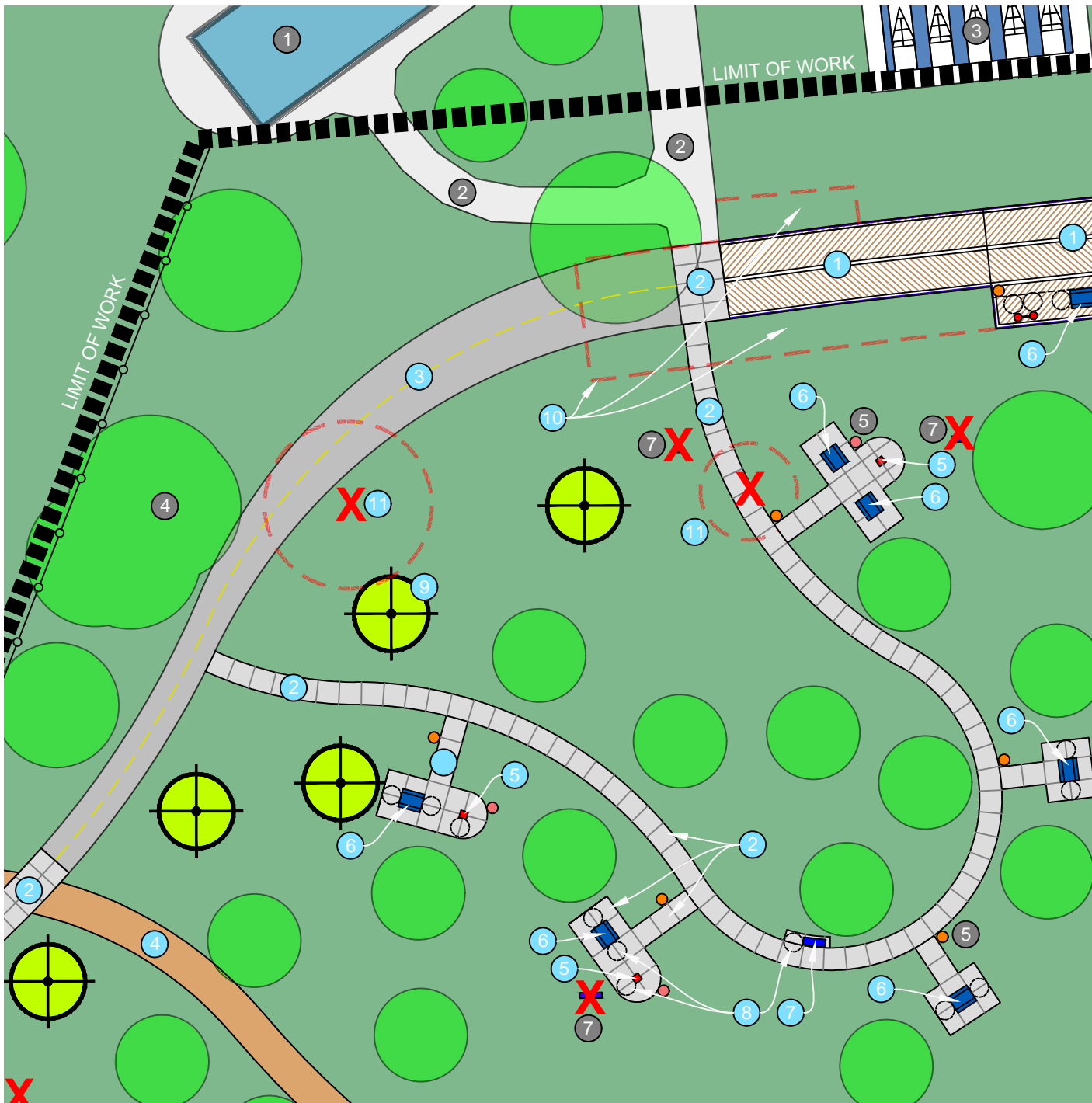
- ① UA ASPHALT PATH, 6' MIN. WIDTH
- ② UA CONCRETE PAVEMENT, 6' MIN. WIDTH
- ③ UA LARGE SWIVEL GRILL W/ SHELF
- ④ UA RECYCLED PICNIC TABLES WITH ACCESSIBLE SEATING ON BOTH ENDS, 12 TABLES UNDER SHELTER
- ⑤ 60" DIA. ADA TURNING AREA
- ⑥ AGGREGATE SERVICE DRIVE, BEACH CLEANING HAUL ROUTE
- ⑦ NATIVE TREE PLANTINGS, 5 TOTAL
- ⑧ TREE REMOVALS, AS NEEDED

NOTES:

IMPROVEMENTS WILL MAKE THE PICNIC SHELTER AN ACCESSIBLE SHELTER.
 THE AGGREGATE DRIVE IS USED AS A HAUL ROUTE TO DISPOSE OF SEAWEED & OTHER DEBRIS COLLECTED AT THE BEACH. THE EXISTING HAUL ROUTE WILL BE MOVED AWAY FROM THE WATERS EDGE.



WEST BEACH PICNIC SHELTER ENLARGEMENT



EXISTING CONDITION NOTES

- ① PAR-3 GOLF STARTER BUILDING
- ② CONCRETE PAVEMENT
- ③ SHUFFLEBOARD COURTS
- ④ SHADE TREES
- ⑤ TRASH CANS & HOT COAL BARRELS TO BE MOVED TO IMPROVE ACCESS
- ⑥ GRILL TO REMAIN
- ⑦ GRILL & BENCH TO BE REMOVED

PROPOSED WORK

- ① UA BOARDWALK IMPROVEMENTS
- ② UA CONCRETE PAVEMENT, 6' MIN. WIDTH
- ③ UA ASPHALT PATH, 6' MIN. WIDTH
- ④ AGGREGATE SERVICE DRIVE
- ⑤ UA SMALL SWIVEL GRILL, 3 TOTAL
- ⑥ UA RECYCLED PICNIC TABLE WITH SEATING ON BOTH ENDS, 6 OF THE 25 TABLES SHOWN ON THIS SHEET
- ⑦ UA BENCH WITH WHEELCHAIR SEATING SPACE TO SIDE
- ⑧ 60" DIAMETER ADA TURNING AREA
- ⑨ NATIVE TREE PLANTINGS, 5 TOTAL
- ⑩ REMOVE BOARDWALK, STAIR & CONCRETE RAMP AREA
- ⑪ TREE REMOVALS, AS NEEDED

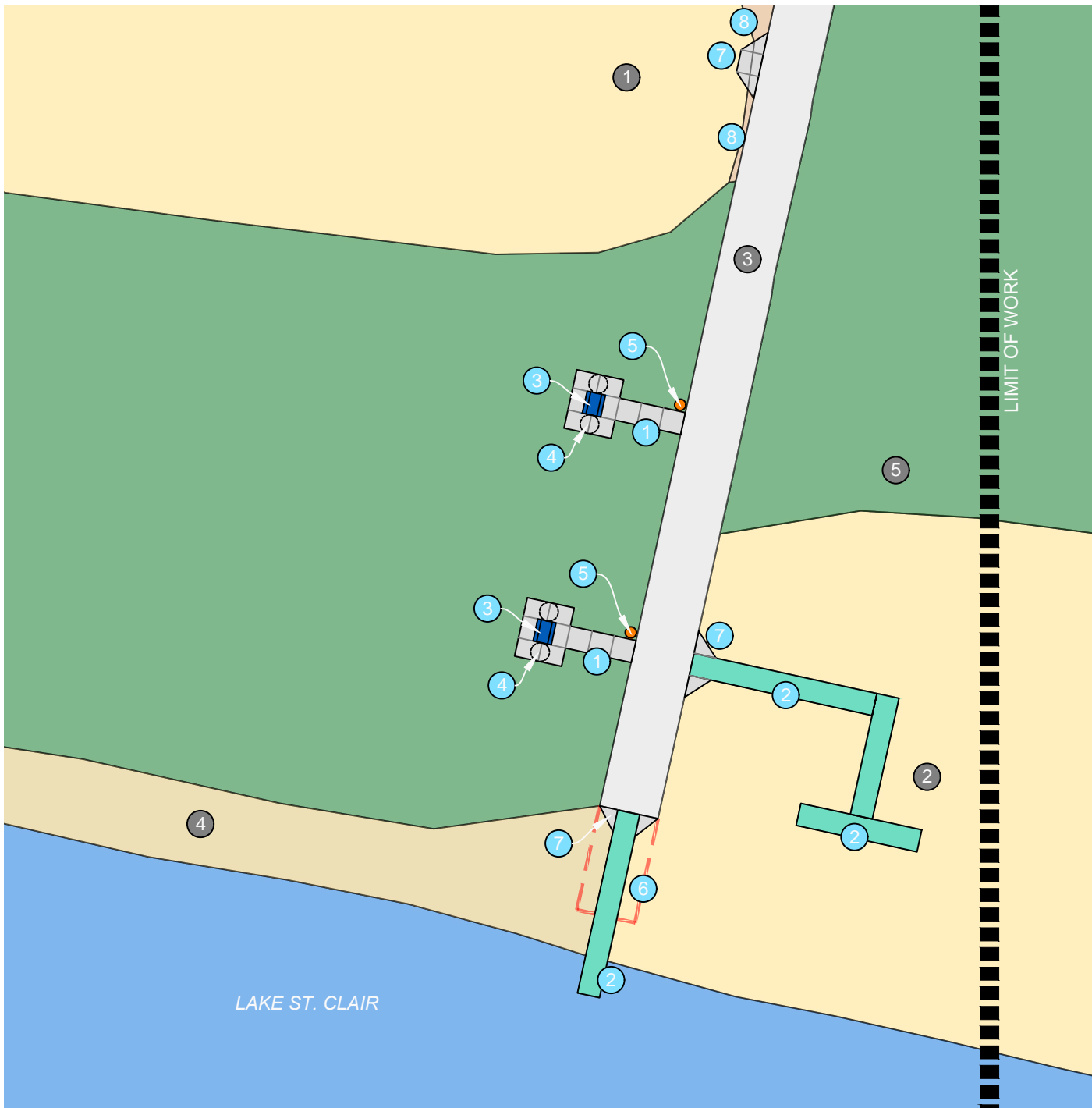
NOTES:

AREA WILL BE MADE AN ACCESSIBLE PICNIC AREA WITH UA TABLES & GRILLS.

35 TABLES & 5 GRILLS EXIST IN THIS AREA. 14 TABLES & 3 GRILLS WILL BE MADE ACCESSIBLE, MORE THAN THE 20% REQUIRED BY ADA. 6 TABLES ARE BEING MOVED ON TO THE BOARDWALK & 2 CLOSER TO THE BEACH.



PICNIC AREA ENLARGEMENT



EXISTING CONDITION NOTES

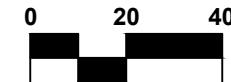
- ① SAND VOLLEYBALL COURT AREA
- ② SAND BEACH AREA
- ③ CONCRETE WALK
- ④ SHORELINE / BEACH HAUL ROUTE
- ⑤ NATIVE PLANTINGS & SOUND SYSTEM TO DISCOURAGE WATER FOWL FROM USING BEACH TURF

PROPOSED WORK

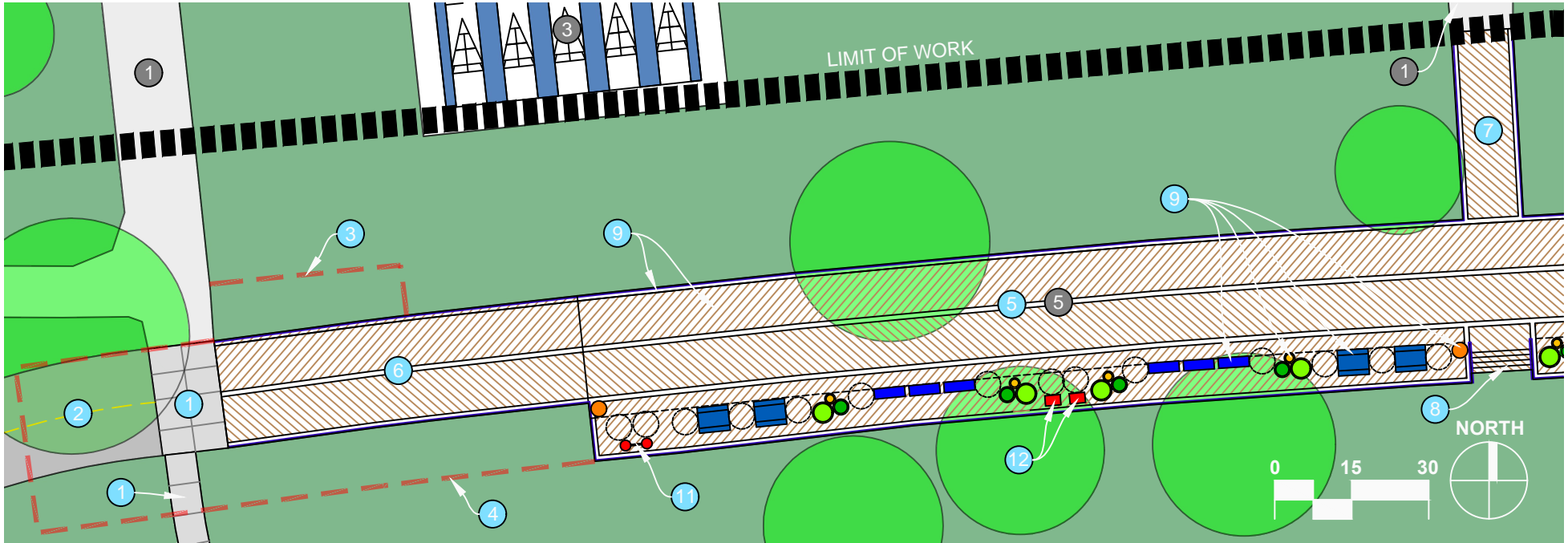
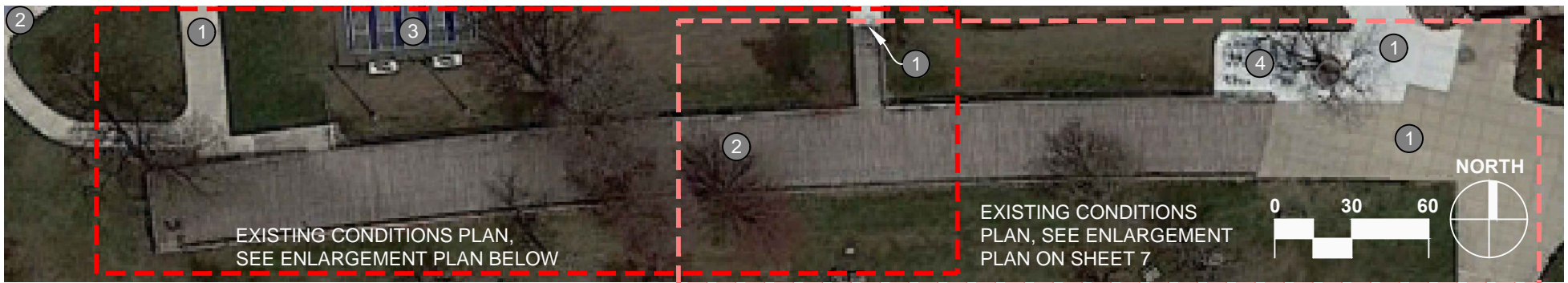
- ① UA CONCRETE PAVEMENT, 6' MIN. WIDTH
- ② ACCESS REC MAT TO BE INSTALLED INTO WATER & OUT OVER THE SAND. CONCRETE RAMPS TO BE INSTALLED AT THE MAT TRANSITION ON TO THE SAND TO HELP PREVENT SETTLING & ADA COMPLIANCE.
- ③ UA RECYCLED PICNIC TABLE WITH SEATING ON BOTH ENDS, 5 TABLES ON CONCRETE, 6 ON BOARDWALK
- ④ 60" DIAMETER ADA TURNING AREA
- ⑤ RELOCATE EXISTING TRASH CANS TO ACCESSIBLE LOCATIONS
- ⑥ REMOVE EXISTING CONCRETE PAVEMENT TO ALLOW FOR THE PROPER SLOPING OF THE ACCESS REC MAT INTO THE WATER
- ⑦ CONCRETE RAMPING INTO SAND TO IMPROVE ACCESS
- ⑧ MODIFY SAND LIMITS UP TO WALK

NOTES:

THE IMPROVEMENTS WILL PROVIDE ACCESS INTO THE WATER & ON TO THE SAND. IT WILL ALSO CREATE TWO ACCESSIBLE PICNIC SITES CLOSE TO THE BEACH.



BEACH AREA ENLARGEMENT



EXISTING CONDITION NOTES

- 1 CONCRETE WALK / ACCESSIBLE ROUTE TO PARKING LOT
- 2 BOARDWALK TO BE RENOVATED
- 3 SHUFFLEBOARD COURTS
- 4 FITNESS EQUIPMENT AREA
- 5 BOARDWALK TO BE RENOVATED

PROPOSED WORK

- 1 UA CONCRETE PAVEMENT, 6' MIN. WIDTH
- 2 UA ASPHALT PATH, 6' MIN. WIDTH
- 3 CONCRETE RAMP REMOVAL
- 4 BOARDWALK SEGMENT TO BE COMPLETELY REMOVED
- 5 ELEVATED BOARDWALK RENOVATION

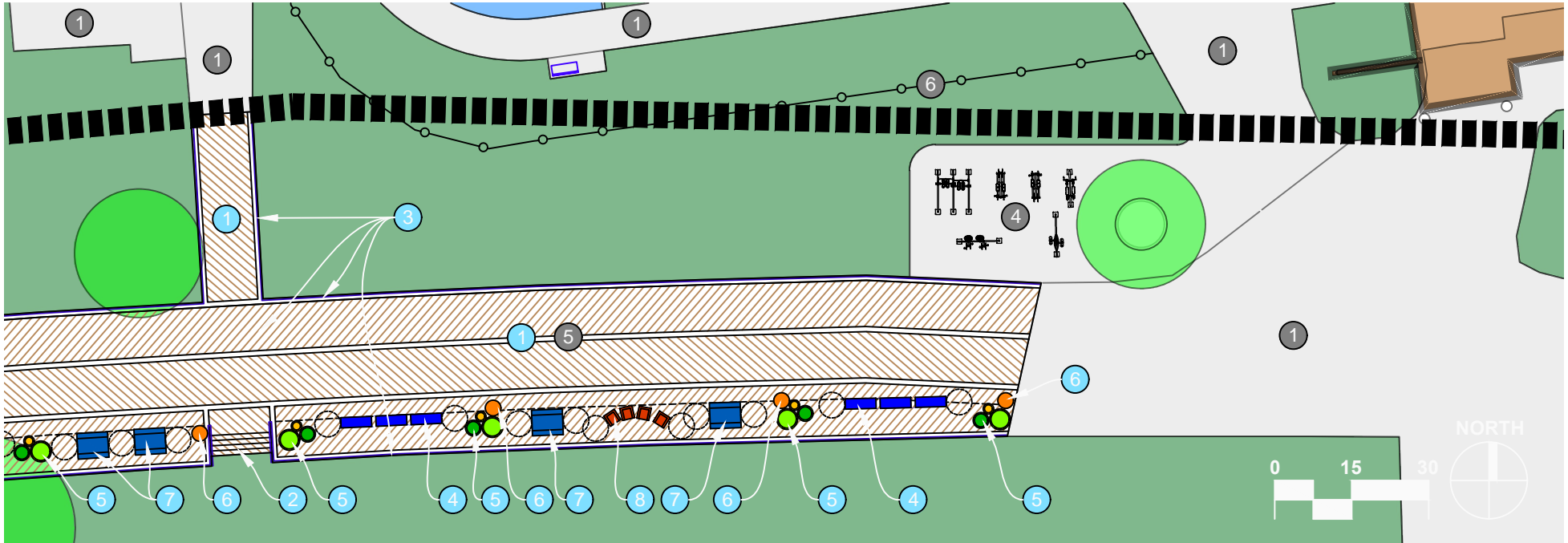
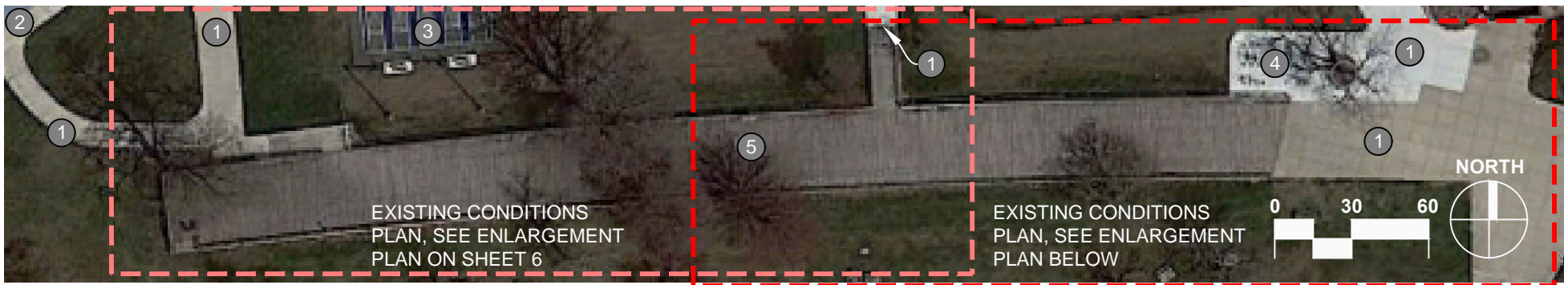
- 6 NEW BOARDWALK RAMP
- 7 RAMP REPLACEMENT
- 8 NEW BOARDWALK STEPS TO ALIGN WITH APPROACH WALK TO NORTH
- 9 ALL BOARDWALK RAILINGS & DECKING TO BE REPLACED, REPLACE & ADD DECK SUPPORTS AS NEEDED, SOLAR EDGE LIGHTS TO REPLACE EXISTING SYSTEM
- 10 ALL SITE FURNISHINGS ON DECK SHALL BE NEW, SEE SHEET 6

- 11 UA DUAL VIEWING SCOPE, ONE TO BE AT AN ACCESSIBLE HEIGHT
- 12 UA INTERPRETIVE SIGNS, 2 TOTAL

NOTES:

THE PROPOSED WORK WILL RENOVATE THE BOARDWALK, IMPROVE CIRCULATION TO VARIOUS AREAS, ADD ACTIVITY ON THE BOARDWALK, & UPDATE AMENITIES

BOARDWALK - WEST END



EXISTING CONDITION NOTES

- ① CONCRETE WALK / ACCESSIBLE ROUTE TO PARKING
- ② PAR-3 GOLF STARTER BUILDING
- ③ SHUFFLEBOARD COURTS
- ④ FITNESS EQUIPMENT AREA
- ⑤ BOARDWALK TO BE RENOVATED
- ⑥ FENCING

PROPOSED WORK

- ① ELEVATED BOARDWALK RAMP REPLACEMENT
- ② NEW BOARDWALK STEPS TO ALIGN WITH APPROACH WALK TO NORTH
- ③ ALL BOARDWALK RAILINGS & DECKING TO BE REPLACED, REPLACE & ADD DECK SUPPORTS AS NEEDED, SOLAR EDGE LIGHTS TO REPLACE EXISTING SYSTEM

- ④ BACKLESS BENCHES WITH WHEELCHAIR SEATING TO SIDE
- ⑤ PLANTERS WITH PLANTS, 3 SIZES
- ⑥ RELOCATED TRASH RECEPTACLE LOCATIONS
- ⑦ UA RECYCLED PICNIC TABLES WITH SEATING ON BOTH ENDS
- ⑧ OVERSIZED CHAIRS

NOTES:

THE PROPOSED WORK WILL RENOVATE THE BOARDWALK, IMPROVE CIRCULATION TO VARIOUS AREAS, ADD ACTIVITY ON THE BOARDWALK, & UPDATE AMENITIES. ALL EXISTING SITE FURNISHINGS ON THE BOARDWALK WILL BE REPLACED. SMALL SOLAR EDGE LIGHTS WILL BE ADDED & REPLACE EXISTING LIGHTING.

BOARDWALK - EAST END