



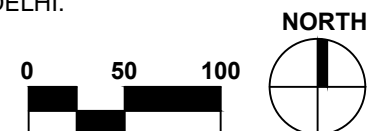
#### EXISTING CONDITION NOTES

- ① AGGREGATE TURNAROUND
- ② FENCED STORAGE ENCLOSURE
- ③ IRON BELLE TRAIL
- ④ STORAGE BUILDINGS
- ⑤ CONCRETE PAVEMENT
- ⑥ PEDESTRIAN CROSSWALK
- ⑦ EDGE OF WETLAND
- ⑧ EDGE OF FLOODPLAIN
- ⑨ FOREST
- ⑩ MOWED TURF
- ⑪ SAND TAKE-OUT AREA
- ⑫ 7' WIDE AGGREGATE RETURN PATH TO EAST DELHI & PUBLIC PARKING WITH ACCESSIBLE VAN SPACES
- ⑬ SMALL SOLAR LIGHTS
- ⑭ WATER SPIGOT, SHUT OFF ENCLOSURE, POST, & SIGNAGE
- ⑮ METROPARK PROPERTY LINE

METROPARKS STAFF WILL COMPLETE ITEMS 1 & 2 IN THE NEAR FUTURE ALONG WITH OTHER TASKS RELATED TO MOVING THE SKIPS CANOE / KAYAK LIVERY & ASSOCIATED PUBLIC PARKING TO EAST DELHI. SKIPS WILL CONTINUE TO REMOVE RENTAL EQUIPMENT AT THIS LOCATION.

EAST DELHI HAS MORE PARKING, A FLUSH RESTROOM, PICNIC SHELTER, PICNIC AREAS, & PLAYGROUND.

ACCESSIBLE PUBLIC PARKING IS 1,000' AWAY IN EAST DELHI & ADDITIONAL PARKING IS LOCATED 1,400' AWAY AT WEST DELHI.



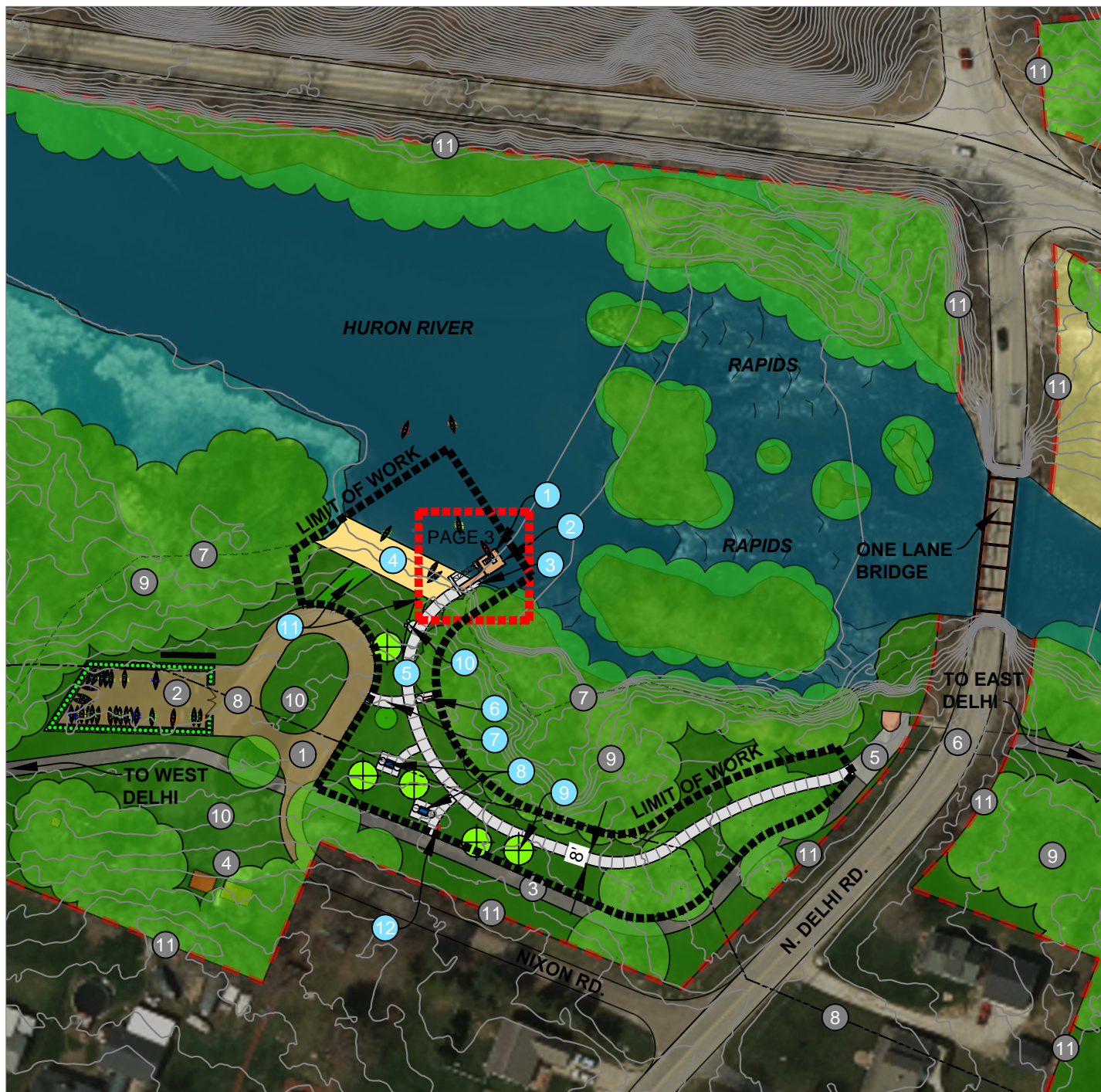
## EXISTING CONDITIONS PLAN

Delhi Metropark - TF21-0017 DEL Launch & Take-out Renovation

February 2021

1 OF 3





#### EXISTING CONDITION NOTES

- ① AGGREGATE TURNAROUND
- ② FENCED STORAGE ENCLOSURE
- ③ IRON BELLE TRAIL
- ④ STORAGE BUILDINGS
- ⑤ CONCRETE PAVEMENT
- ⑥ PEDESTRIAN CROSSWALK
- ⑦ EDGE OF WETLAND
- ⑧ EDGE OF FLOODPLAIN
- ⑨ FOREST
- ⑩ MOWED TURF
- ⑪ METROPARKS PROPERTY LINE

#### PROPOSED WORK

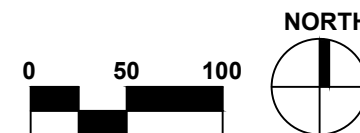
- ① UA KAYAK LAUNCH / TAKE-OUT
- ② SOLAR EDGE LIGHTING ON DOCK
- ③ RIP RAP
- ④ SAND BEACH AREA TO BE WIDENED TO 25'
- ⑤ WIDEN 7' AGGREGATE PATH TO A 8' WIDE UA CONCRETE WALK
- ⑥ 6' BENCH SURFACE MOUNTED TO CONCRETE PAVEMENT WITH WHEELCHAIR SPACE TO SIDE
- ⑦ UA CONNECTOR PATH TO TURNAROUND AREA
- ⑧ UA PICNIC TABLE MOUNTED TO PAVEMENT WITH WHEELCHAIR ACCESS ON BOTH ENDS
- ⑨ NATIVE TREES, 5 TOTAL
- ⑩ UA SPIGOTS WITH HOSES & HOSE RACKS TO BE LOCATED IN AN ACCESSIBLE LOCATION ALONG CONCRETE WALK.
- ⑪ RESTORE AGGREGATE TO TURF
- ⑫ DOG WASTE STATION IN AN ACCESSIBLE LOCATION

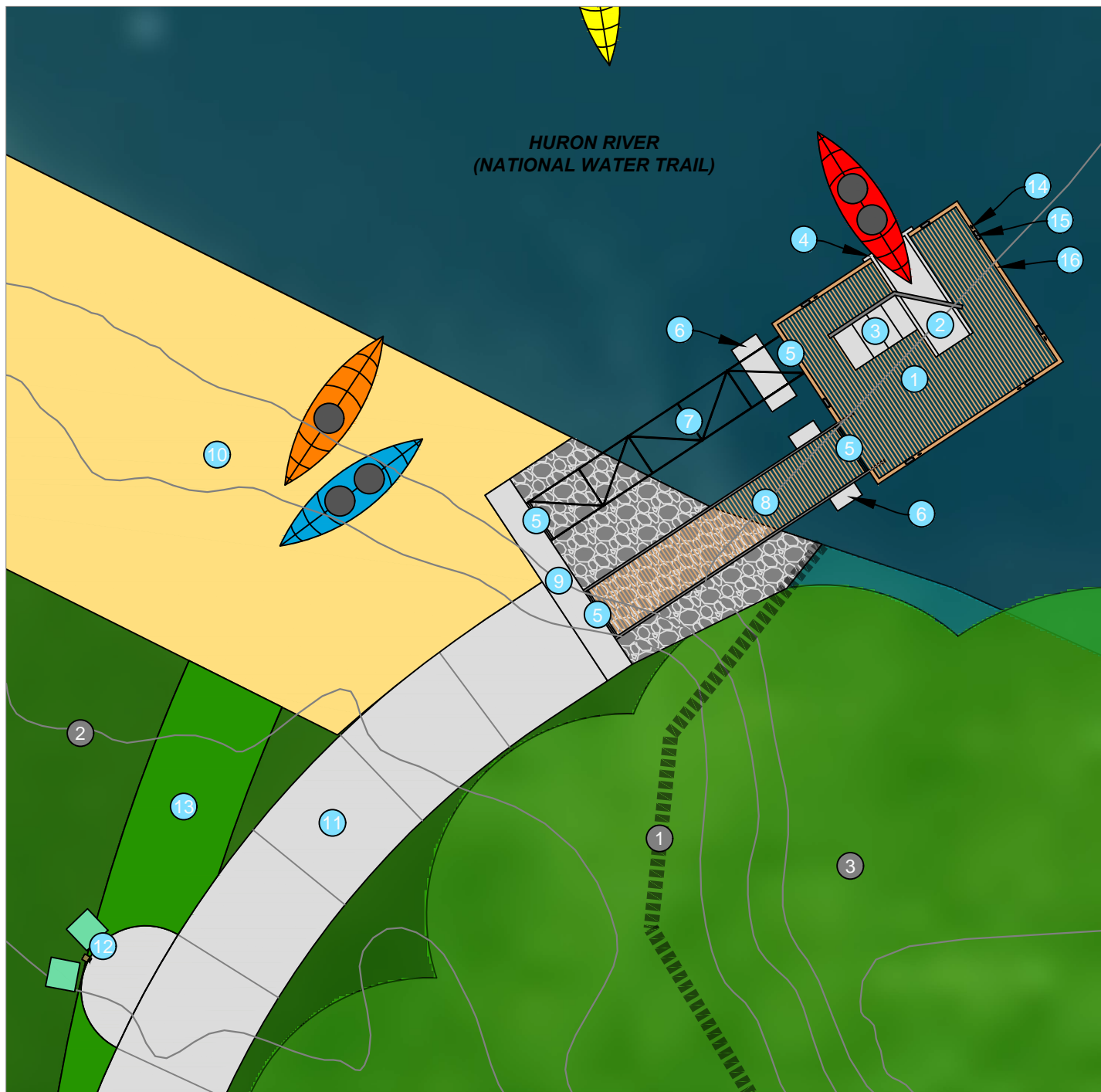
## CONCEPTUAL PLAN

Delhi Metropark - TF21-0017 DEL Launch & Take-out Renovation

February 2021

2 OF 3



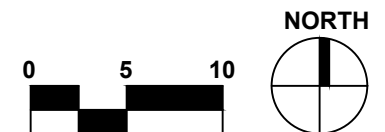


#### EXISTING CONDITION NOTES

- ① EDGE OF WETLAND
- ② MOWED TURF
- ③ FOREST

#### PROPOSED WORK

- ① 13' X 15' FLOATING DOCK
- ② SAFE LAUNCH
- ③ TRANSFER STAIRS & RAILING
- ④ UNDERWATER CONNECTOR
- ⑤ HINGE
- ⑥ COMPENSATING FLOAT
- ⑦ 20' CONTROL ARM
- ⑧ 4' X 20' ACCESSIBLE GANGWAY
- ⑨ CONCRETE WALL
- ⑩ SAND BEACH AREA TO BE WIDENED TO 25'
- ⑪ WIDEN 7' AGGREGATE PATH TO A 8' WIDE UA CONCRETE WALK
- ⑫ UA SPIGOTS WITH HOSES & HOSE RACKS TO BE LOCATED IN AN ACCESSIBLE LOCATION ALONG CONCRETE WALK.
- ⑬ RESTORE AGGREGATE TO TURF
- ⑭ CLEATS FOR TYING UP KAYAKS & CANOES, 5 TOTAL
- ⑮ SOLAR EDGE LIGHTS, 7 TOTAL
- ⑯ WHEELCHAIR GUARD AROUND THE PERIMETER OF THE DOCK



## KAYAK LAUNCH / TAKE-OUT ENLARGEMENT

Delhi Metropark - TF21-0017 DEL Launch & Take-out Renovation

February 2021

3 OF 3