

TREE RINGS

We can find out a lot about a tree by looking at the rings in its trunk.
To see the rings, we must look at a cross section of the trunk, just like this!

First year growth

One ring usually stands for one year of the tree's life.

Rainy Season

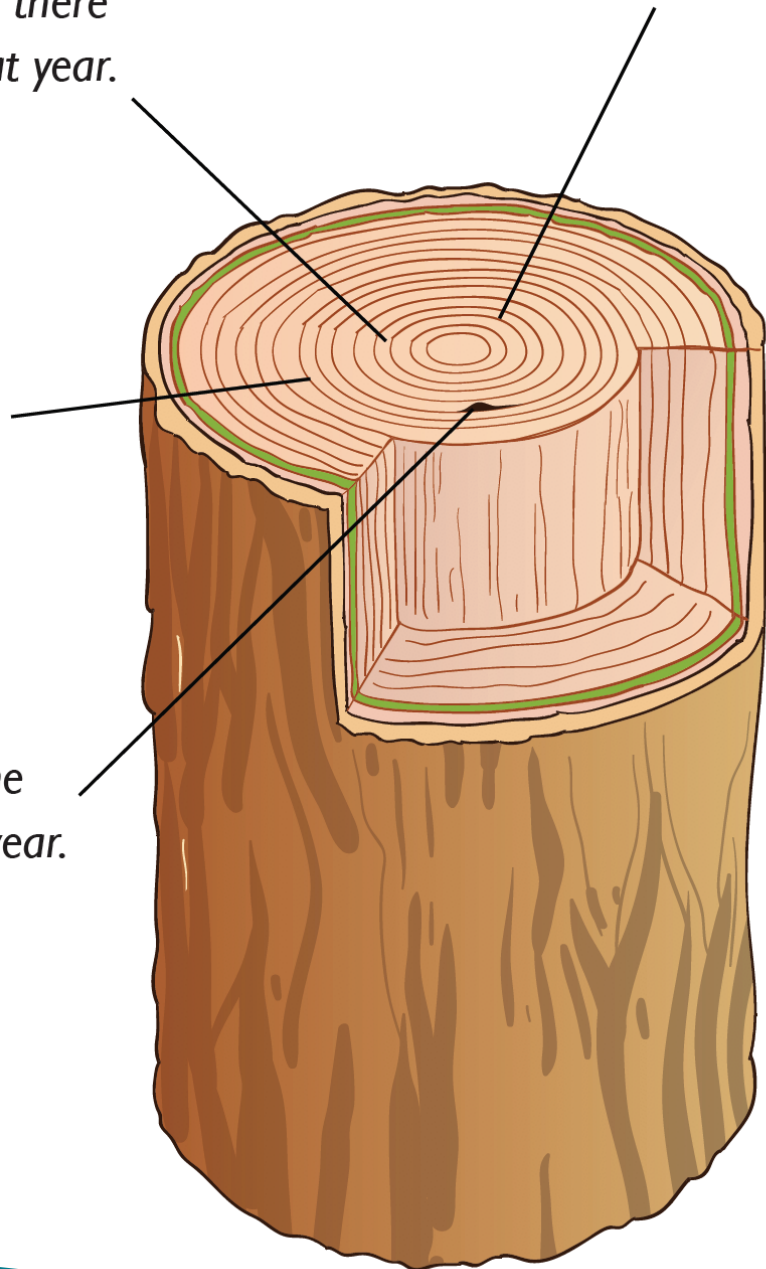
A wide ring means there was lots of rain that year.

Dry Season

A thin ring means there was no rain that year.

Fire Damage

A dark mark means the tree was damaged that year.



www.education.com/worksheets

ACTIVITY

On your next outdoor adventure, if you come across a tree stump, take a look at its rings.
Can you count how old the tree was? Did it have any damage?

Draw a picture of it here: