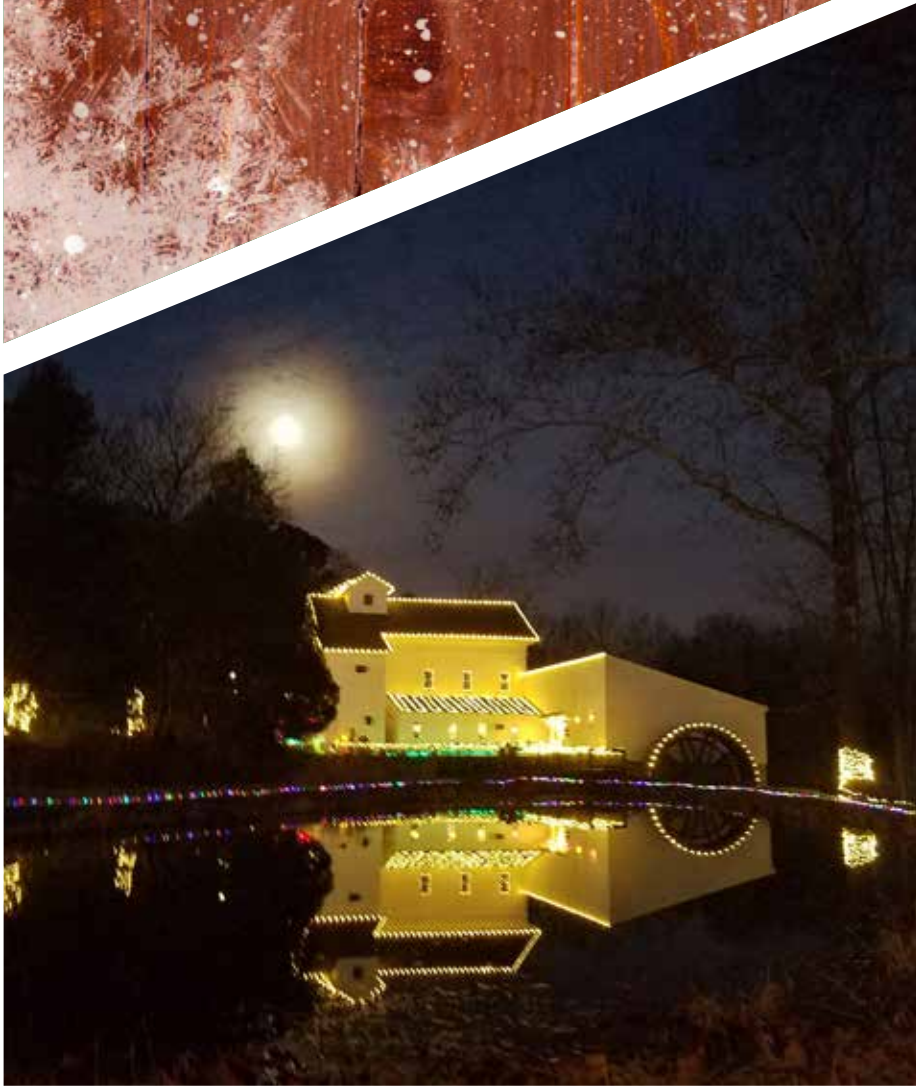




# HURON-CLINTON metroparks sponsorship opportunities



HURON-CLINTON  
metroparks

WOLCOTT MILL METROPARK  
*Heritage*  
**HOLIDAYS**

Wolcott Mill Metropark | 6 p.m.-9 p.m. • November 30 & December 1 • December 7 & 8 • December 14 & 15

WOLCOTT MILL METROPARK

— *Heritage* —

HOLIDAYS

Create a *new* family tradition.

# Fact Sheet

## What We Are Planning:

Heritage Holidays at Wolcott Mill Metropark takes participants back in time to experience the charm of holiday seasons past. The Historic Center is transformed into a magical holiday wonderland. Our goal is to celebrate community, while experiencing the heritage and history of the iconic Wolcott Mill Metropark Historic Center during the holiday season.

## Where and When:

Wolcott Mill Metropark is located, nearly in the center, of Macomb County in Ray Township with the park entrance and parking located at 64162 Kunstman Road.

The Historic Center will be open Fridays and Saturdays beginning November 30 through mid-December, from 6pm to 9pm for this special holiday event.

November 30 & December 1  
December 7 & 8  
December 14 & 15

Event Cost: \$5 per person

## Who Attends:

In 2017, more than 4,600 guests attended from local communities surrounding Wolcott Mill Metropark. Families, community groups, schools and more enjoyed the event, while getting into the holiday spirit.



# Sponsorship Opportunities

## PLATINUM SPONSOR - LIGHT UP THE MILL - \$5,000

The historic Wolcott Mill dates back to 1845 and is listed on the National Register of Historic Places. The Historic Center plays a large educational role at Wolcott Mill Metropark allowing visitors to learn about the operation and the importance of grist mills to the region. Last year alone, nearly 54,000 people visited the Historic Center.

- Company logo on all promotional material
- A "Light Up the Mill" 4' x 6' banner will be displayed at the historic grist mill
- Company logo or name in all press releases, advertisements, media buys, social media posts and website
- Company logo or name in email promotions (circulation 75,000+)
- Opportunity for company to decorate a tree in the Festival of Trees
- 20 complimentary event tickets



# Sponsorship Opportunities

*(continued)*

## **GOLD SPONSOR - SANTA CLAUS - \$2,500**

Children will be able to visit Santa in the historic Wolcott Mill and share their holiday wishes in the hopes of making this holiday season the best one yet! This sponsorship includes:

- Company logo on all promotional materials
- 12" x 18" Sign with company logo at the entrance to visit Santa at the mill
- Company logo or name in all press releases, advertisements, media buys, social media posts and website
- Company logo or name in email promotions (circulation 75,000+)
- Opportunity for company to decorate a tree in the Festival of Trees
- 12 complimentary event tickets

## **SILVER SPONSOR - WAGON RIDES - \$1,000**

Enjoy a holiday wagon ride in the park. This sponsorship includes:

- Company logo on all promotional materials
- Sign with logo on the wide of the wagon
- Company logo on event website
- Opportunity for company to decorate a tree in the Festival of Trees
- 8 complimentary event tickets



# Sponsorship Opportunities

*(continued)*

## BRONZE SPONSOR - HOLIDAY CRAFTS - \$500

Participants get to express their creative side and take home a holiday craft. This sponsorship includes:

- Company logo on event website
- Company logo on 12" x 18" sign at holiday craft station
- Opportunity for company to decorate a tree in the Festival of Trees
- 6 complimentary event tickets

## CANDY CANE SPONSOR - CANDY CANES - \$250

All children who come to visit with Santa Claus will receive a candy cane. This sponsorship includes:

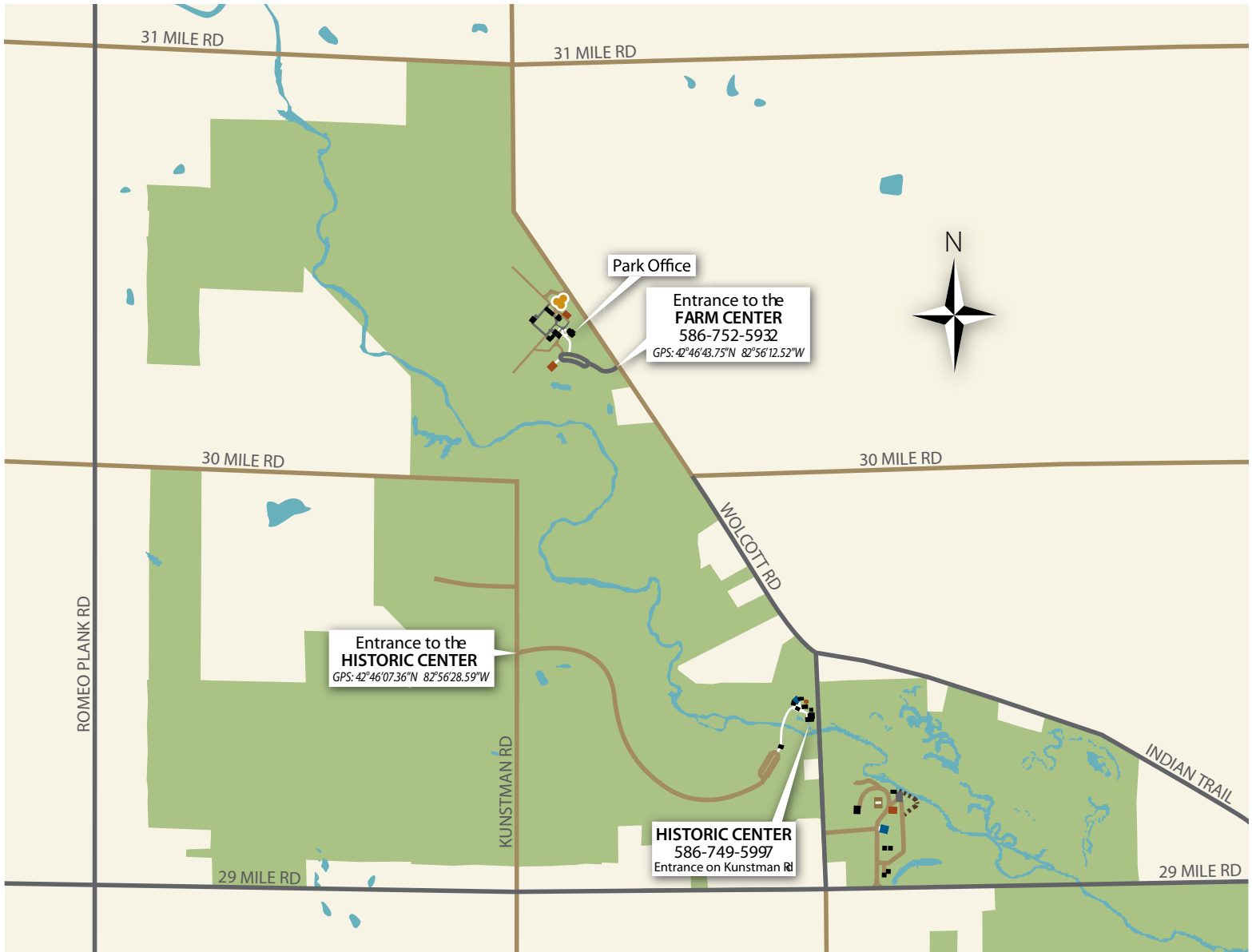
- Company logo on event website
- Opportunity for company to decorate a tree in the Festival of Trees
- 4 complimentary event tickets

## IN-KIND SPONSORS

- Sponsorship level reflective of contribution value



# Wolcott Mill Park Map



Wolcott Mill Metropark | 6 p.m.-9 p.m. • November 30 & December 1 • December 7 & 8 • December 14 & 15



[www.metroparks.com](http://www.metroparks.com)