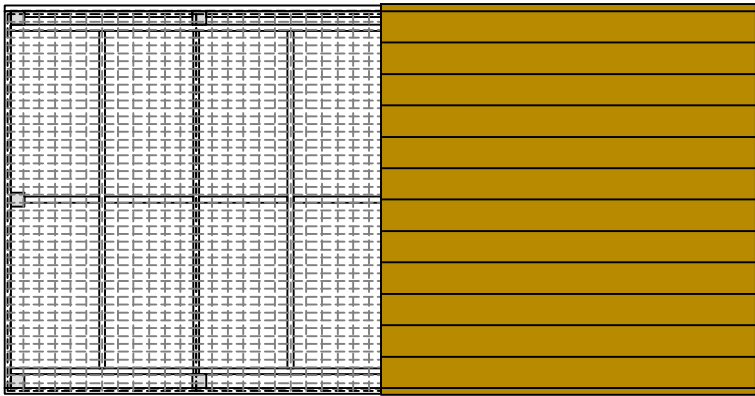
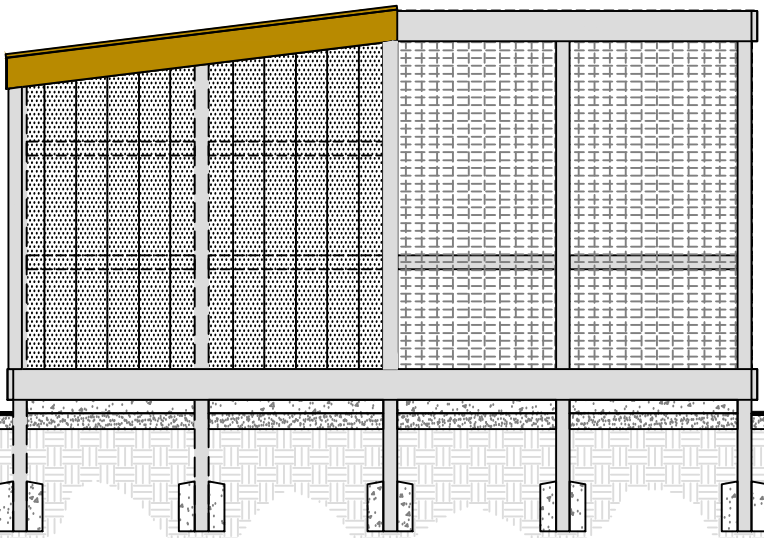


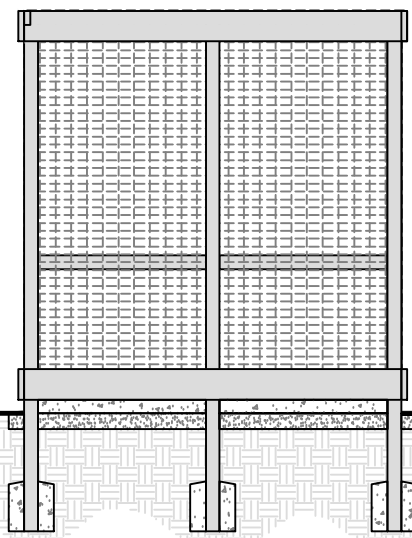
ROOF FRAMING PLAN



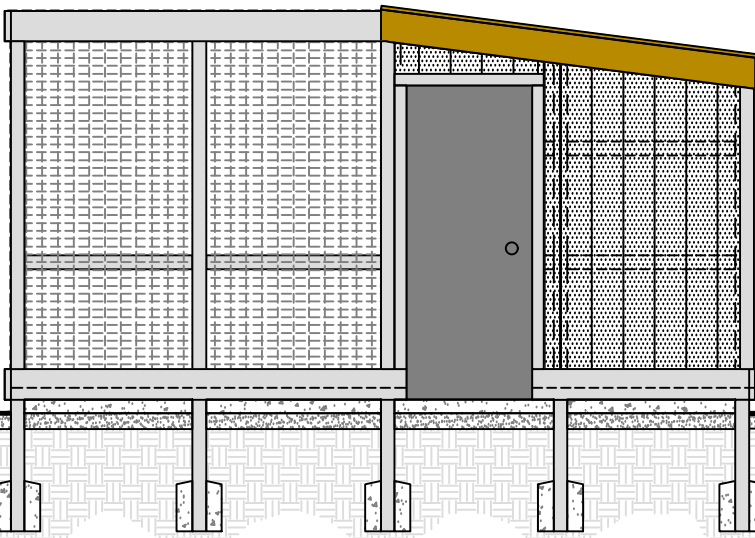
PLAN VIEW



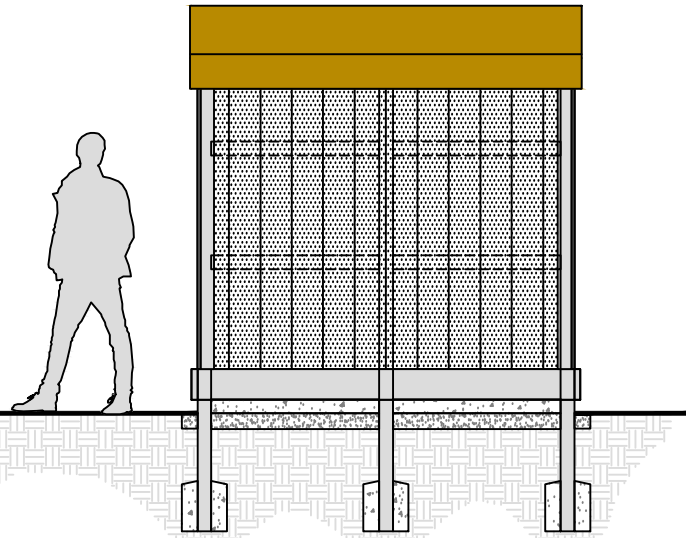
ELEVATION LEFT SIDE



FRONT



ELEVATION RIGHT SIDE



BACK

MATERIALS LIST

(VERIFY QUANTITIES, MATERIALS, AND HARDWARE PRIOR TO PURCHASING)

- (12) 4" X 4" X 12' TREATED POSTS
- (12) 2" X 8" X 8' TREATED FRAMING TOP & BOTTOM
- (13) 2" X 6" X 8' TREATED JOISTS
- (22) 2" X 4" X 8' TREATED FRAMING
- (6) 4' X 8' T1-11 PANELS
- (11) 1" X 4" CEDAR TRIM
- (1) 6'-6" X 34" WIDE PREFAB DOOR
- (8) 4' X 8' WIRE MESH PANELS, COLOR BLACK, MATCH WHAT WAS USED AT KENSINGTON
- (3) 8' LONG X 36" WIDE RIB STEEL ROOF PANELS, COLOR TO MATCH NATURE CENTER ROOF
- (1) ALUMINUM TRIM COIL TO WRAP 2 X 8 FRAMING UNDER ROOF, 30 LF, MATCH COLOR OF STEEL ROOF PANELS
- (12) 60 LB BAGS OF CONCRETE FOR FOOTINGS

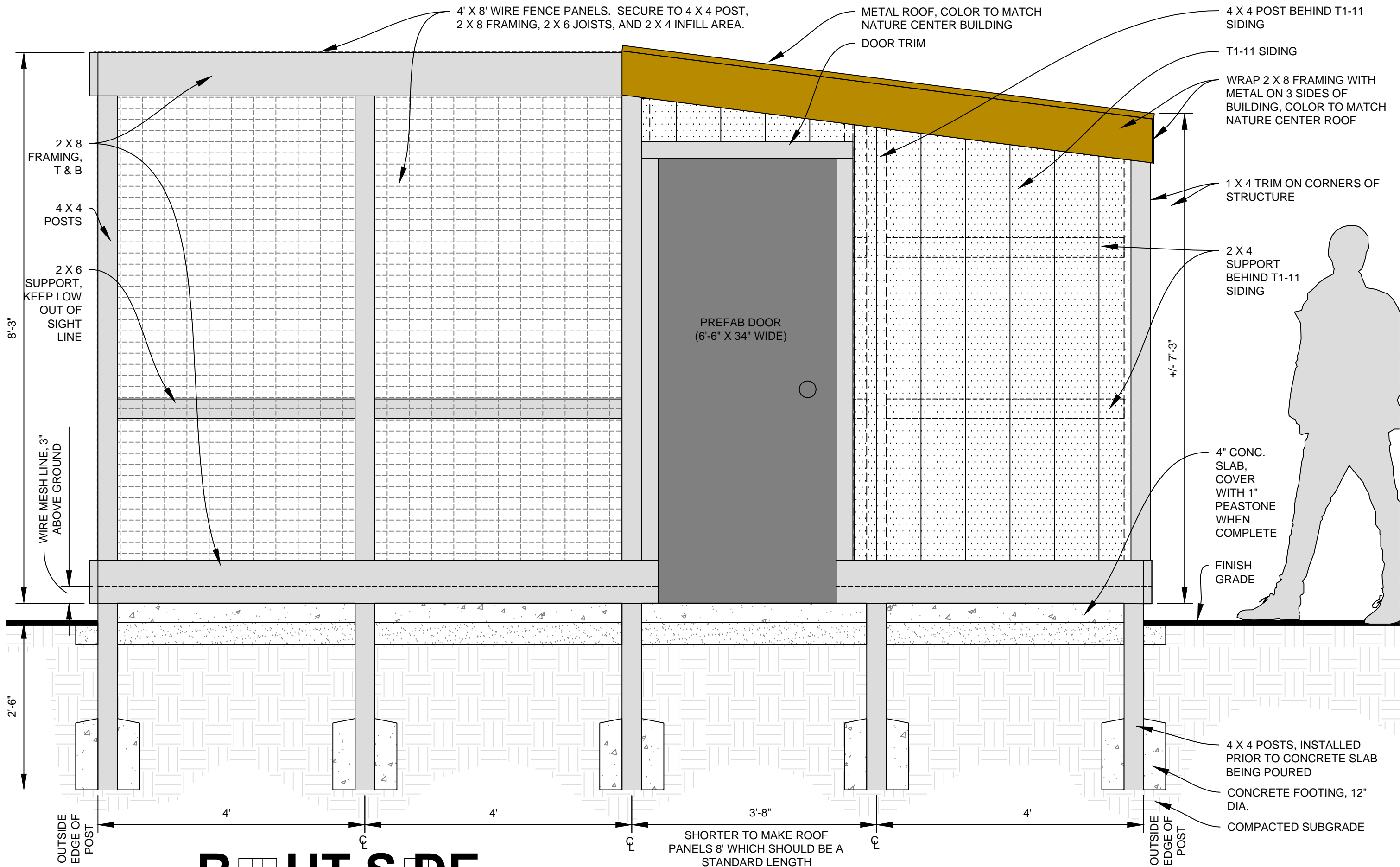
2 CY OF 21AA CRUSHED LIMESTONE BASE
 1.6 CY OF CONCRETE (8' X 15-8" X 4" THICK)
 .4 CY OF PEASTONE

SOLID ACRYLIC STAIN FOR T1-11 SIDING, 2 COATS, COLOR: BEIGE TO COMPLEMENT BRICK COLOR ON NATURE CENTER, SUBMIT COLOR SAMPLE FOR APPROVAL

SOLID ACRYLIC STAIN FOR TRIM, 2 COATS, COLOR: CHESTNUT OR CHARCOAL BROWN TO NATURE CENTER ROOF COLOR, SUBMIT COLOR SAMPLE FOR APPROVAL

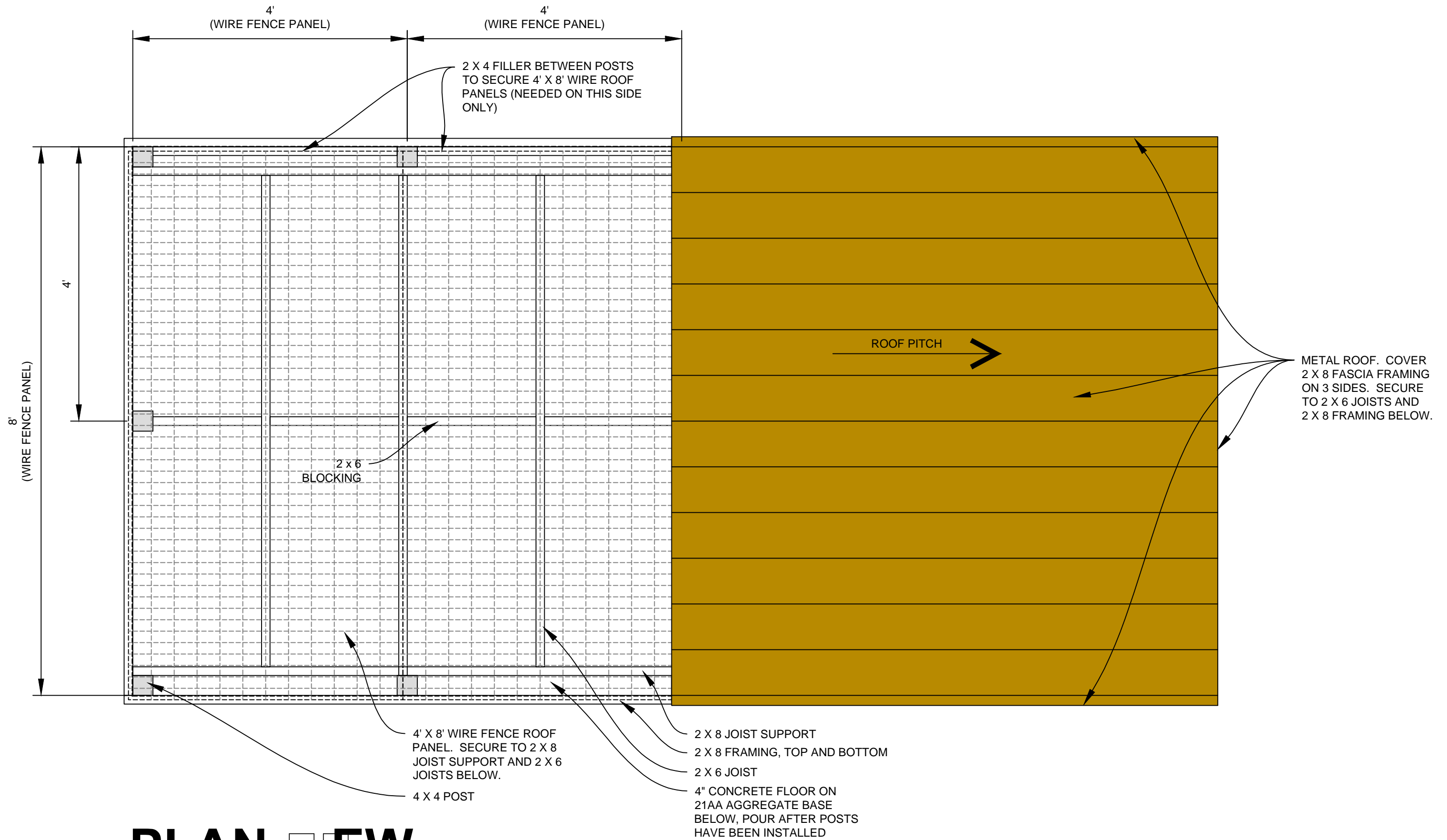
PAINT FOR DOOR, 2 COATS, COLOR: WHITE, SUBMIT COLOR SAMPLE FOR APPROVAL

- HARDWARE:
- CONCRETE SCREWS OR ANCHOR BOLTS
 - FRAMING SCREWS
 - STAPLES TO SECURE METAL FABRIC PANELS
 - DOOR HARDWARE
 - ROOFING FASTENERS



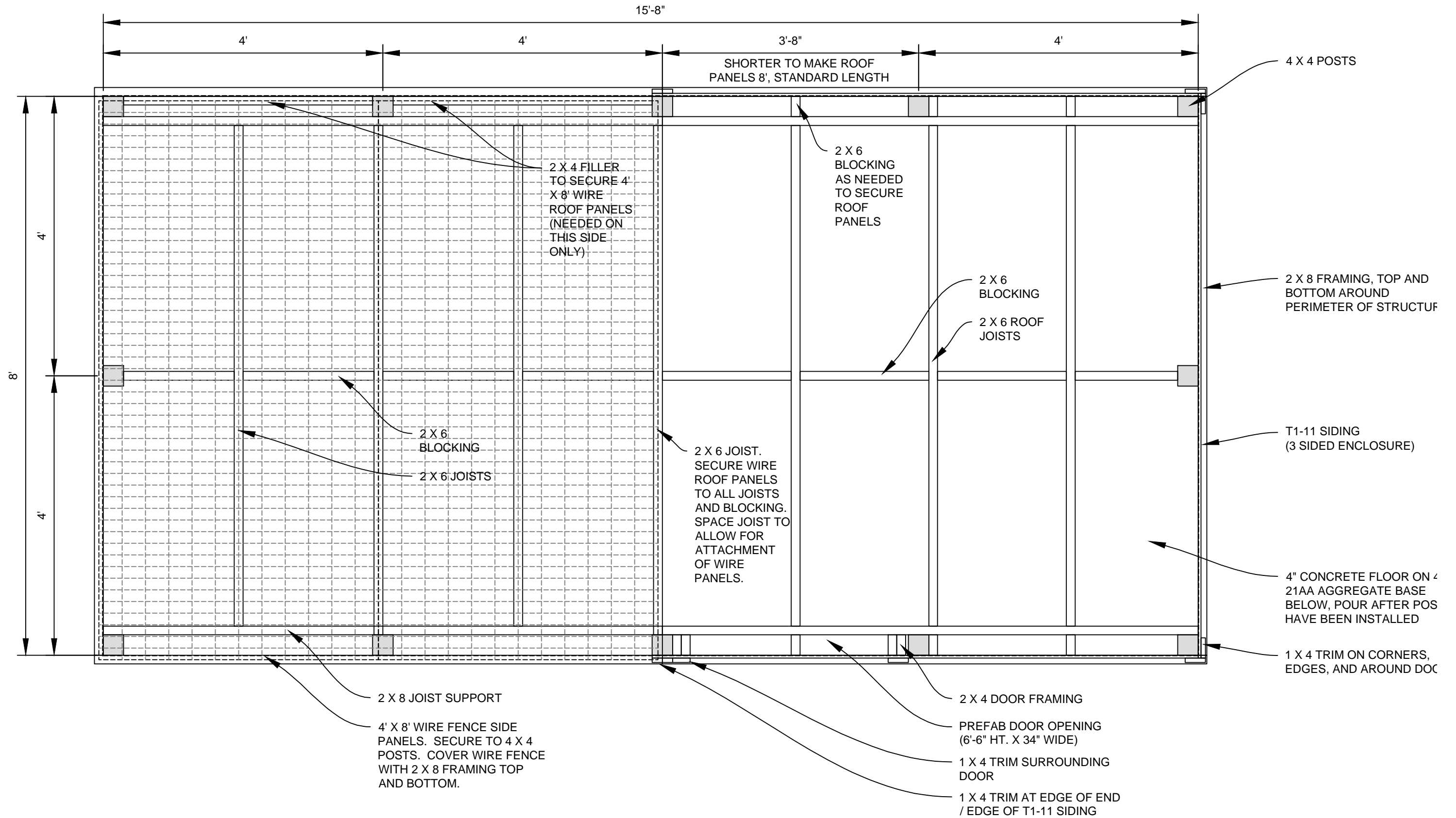
RIGHT SIDE

SCALE: 3/4" = 1'-0"



PLAN EW

SCALE: 3/4" = 1'-0"



ROOF RAM PLAN

SCALE: 3/4" = 1'-0"

HAWK AND OWL ENCLOSURES

OAKWOODS METROPARK

JUNE 26, 2018

APPROXIMATE
LIMIT OF EXISTING
MOWING / TURF

