

FIRE PIT BENCH

Concrete footings required.

Benches must be located 7'-0" minimum from the outside edge of a fire pit ring.



Photo of similar benches at Lake St. Clair. Please note the post detail has been changed in the detail below.

FIRE PIT BENCH DETAIL

SCALE: 1/2" = 1'-0"

NOTE:

THE FRONT EDGE OF A BENCH MUST BE A MINIMUM OF 7'-0" FROM THE INSIDE EDGE OF A DOUBLE WALLED FIRE PIT. DOUBLE WALLED PITS ARE REQUIRED IN THE METROPARKS. BENCH LOCATIONS MUST BE COORDINATED WITH FUTURE REPLACEMENTS OF OPEN FIRE PITS. TYPICAL INSIDE DIMENSIONS OF DOUBLE WALLED FIRE PITS ARE 30", 48" AND 72" DIAMETERS.

MATERIALS:

TREATED LUMBER

- (6) 2 X 4 X 12' BOARDS REQUIRED, CUT TO VARIOUS LENGTHS.
- (1) 4 X 4 X 10' POST, CUT IN HALF.

HARDWARE

- 3 IN. EXTERIOR GRADE SCREWS (+/-86 REQUIRED)
- 1/2" X 8" HEX BOLTS WITH WASHERS, NUTS AND END CAPS (4 BOLTS REQUIRED)

CONCRETE

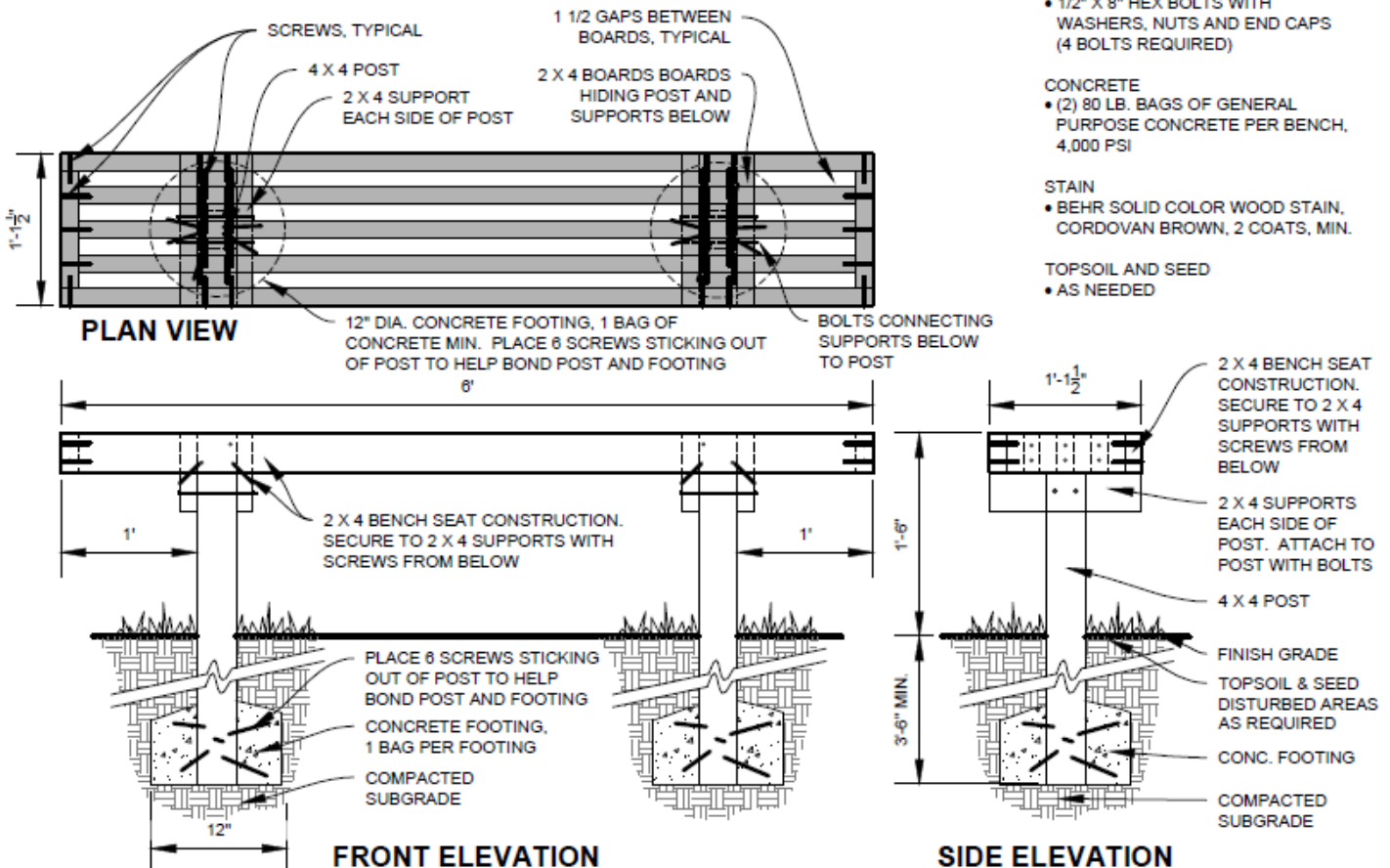
- (2) 80 LB. BAGS OF GENERAL PURPOSE CONCRETE PER BENCH, 4,000 PSI

STAIN

- BEHR SOLID COLOR WOOD STAIN, CORDOVAN BROWN, 2 COATS, MIN.

TOPSOIL AND SEED

- AS NEEDED



AMPHITHEATER BENCH

Concrete footings required.

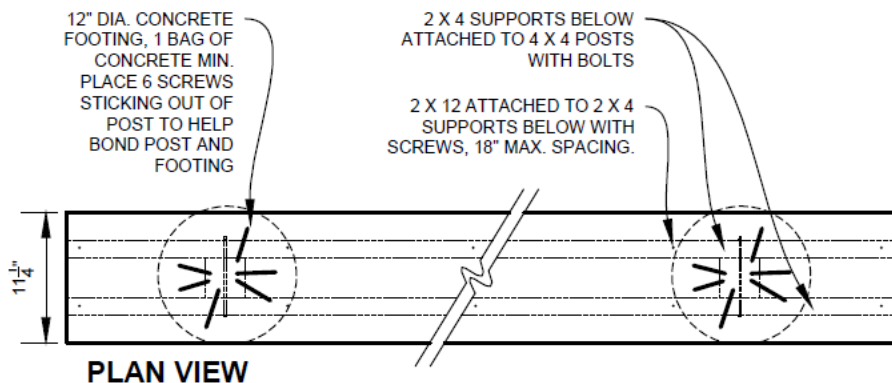
Bench lengths shall be 6', 8' or 10'. Different bench lengths can be used within the same amphitheater configuration.



Photo of similar bench style located at Stony Lake Camp, New Era Michigan

TYPICAL AMPHITHEATER BENCH DETAIL

SCALE: 1/2" = 1'-0"



MATERIALS:

TREATED LUMBER

- 2 X 12 BOARDS. LENGTHS SHALL BE 6', 8' OR 10' MAX.
- 2 X 4 BOARDS. LENGTH TO MATCH LENGTH OF BENCH, 10' MAXIMUM LENGTH.

HARDWARE

- 3 IN. EXTERIOR GRADE SCREWS
- 1/2" X 8" HEX BOLTS WITH WASHERS, NUTS AND END CAPS (4 BOLTS REQUIRED PER BENCH)

CONCRETE

- (2) 80 LB. BAGS OF GENERAL PURPOSE CONCRETE PER BENCH, 4,000 PSI

STAIN

- BEHR SOLID COLOR WOOD STAIN, CORDOVAN BROWN, 2 COATS, MIN.

TOPSOIL AND SEED - AS NEEDED

