

**Amended AGENDA**  
**Huron-Clinton Metropolitan Authority**  
**Board of Commission Meeting**  
**June 8, 2017 – 10:30 a.m.**  
**Administrative Office – Boardroom**

---

1. Chairman's Statement
2. Approval – June 8, 2017 Full Agenda
3. Approval – May 11, 2017 Regular Meeting Minutes
4. Election of Board Officers pg. 1
5. Public Participation

**Consent Agenda**

6. **Approval – June 8, 2017 Consent Agenda**
  - a. Approval – May 2017 Financial Statements and Payment Registers
  - b. Approval – May 2017 Appropriation Adjustments pg. 3
  - c. Purchases
    1. Glow Products for Fireworks events pg. 7
  - d. Approval – 2017 Tax Levy Report pg. 11
  - e. Bids – Hike/Bike Trail Crack Filling/Seal Coating, All Locations pg. 15
  - f. Bids – Tollbooth Replacement, Stony Creek Metropark pg. 19
  - g. Approval – Temporary and Highway Easement, Stony Creek Metropark pg. 23
  - h. Approval – Michigan Council for Arts & Cultural Affairs Grant Request pg. 49
  - i. Report – Correction to Culvert Repairs, Willow Metropark pg. 67
  - j. Approval – Contractual Services pg. 71

**Regular Agenda**

7. **Reports**
  - A. *Finance Department*
    1. Report – 2016 Audited Financial Statements pg. 73
  - B. *Planning Department*
    1. Approval – Hudson Mills Master Plan pg. 75
  - C. *Engineering Department*
    1. Bids – Exterior Insulated Finish System Repairs, Lake St. Clair Metropark pg. 77
  - D. *Natural Resources Department*
    1. Report – Black Creek Marsh Dredging Project, Lake St. Clair Metropark pg. 87
8. Other Business
9. Staff Officer Update
10. Commissioner Comments
11. Motion to Adjourn

<p style="text-align:center">The next regular Metroparks Board meeting will take place <u>Thursday, July 13, 2017 – 10:30 a.m.</u> Oakwoods Metropark – Nature Center</p>
---





## HURON-CLINTON METROPOLITAN AUTHORITY

To: Board of Commissioners  
From: George Phifer, Director  
Subject: Board of Commission – Officer Elections  
Date: June 1, 2017

**Requested Action: Motion to Elect Board Officers**

That the Board of Commissioners' elect a Chairman, Vice-Chairman, Secretary and Treasurer at the June 8, 2017 Board meeting as required by the Metroparks Bylaws.

**Background:** The Huron-Clinton Metropolitan Authority Bylaws read in part:

*The Board of Commissioners shall elect a Chairman, a Vice-Chairman, a Secretary, and a Treasurer, who shall be elected by the Commissioners at the annual meeting of the Board of Commissioners.*

The regular monthly meeting held in the month of June constitutes the annual meeting of the Board of Commissioners.



**HURON-CLINTON METROPOLITAN AUTHORITY**

To: Board of Commissioners  
From: Michelle Cole, Chief Financial Officer  
Subject: Approval – May Appropriation Adjustments  
Date: June 1, 2017

**Action Requested: Motion to Approve**

That the Board of Commissioners' approve the May 2017 Appropriation Adjustments as recommended by Director Phifer and Chief Financial Officer Michelle Cole.

**Background:** The Metroparks ERP system provides a work-flow process to facilitate departmental budget management. Requested transfers are initiated by department staff and routed to the appropriate Department Head/District Superintendent for review and approval. Finance provides a final review of the approved requests to verify that they do not negatively affect the Fund Balance.

For the month of May, \$33,624.44 represents funds transferred between accounts within the parks to cover over budget accounts or to move funds to the correct account.

In addition, expense accounts were increased for two grant-funded projects (1) the Wildflower Association (\$815) at Kensington Interpretive Center plantings; and (2) 3M Eco Grant (\$3,725) for Oakwoods Mobile Outreach Van improvements.

\$40,996 was transferred from the Administrative Capital Unallocated account to fund two additional phases of the IT Infrastructure work and \$22,141.75 was transferred from the Administrative Office Capital to Administrative Office Major Maintenance account related to the Administrative Office Kitchen/Work room update. These transfers were approved by the Director prior to processing.

During the month, amendments that affected the Fund Balance resulted in a net decrease of \$40,131.70. This is the result of transfers processed to cover the beginning balances for food and sundry inventories throughout the park system (\$55,131.70), which was offset by funding received from the Foundation for planned Michigan Philharmonic events at Stony Creek (\$5,000) and Lake Erie (\$10,000) Metroparks. These transfers were also approved by the Director prior to processing. The result of these changes can be seen in the attached chart.

**Attachment: Appropriation Adjustments**



## May 2017 Appropriation Transfer Summary

### Expense Accounts

	Location	Increase	Decrease	Difference
Capital				
	Administrative Office	\$ -	\$ 42,246	\$ (42,246)
	Lake St. Clair	-	2,500	(2,500)
	Lower Huron	31,289	-	31,289
	Stony Creek	-	7,750	(7,750)
	Indian Springs	9,707	-	9,707
	Total	\$ 40,996	\$ 52,496	\$ (11,500)

### Major Maintenance

Administrative Office	\$ 22,142	\$ 22,142
Total	\$ 22,142	\$ - \$ 22,142

### Operations

Lake St. Clair	\$ 4,669	\$ 4,669
Kensington	36,062	35,423 639
Lower Huron	14,060	1,105 12,955
Hudson Mills	7,340	1,200 6,140
Stony Creek	9,856	3,100 6,756
Lake Erie	6,817	6,817
Wolcott	1,895	1,895
Indian Springs	7,015	1,200 5,815
Huron Meadows	3,586	3,586
Total	\$ 91,300	\$ 42,028 \$ 49,272

### Administration

Administrative Office	\$ 1,996	\$ 2,238	\$ (242)
Total	1,996	2,238	(242)
<b>Total Expense</b>	<b>\$ 156,434</b>	<b>\$ 96,762</b>	<b>\$ 59,672</b>

### Revenue Accounts

### Operations

Lower Huron	\$ 3,725	\$ -	\$ 3,725
Stony Creek	5,000	-	5,000
Lake Erie	10,000	-	10,000
Total	\$ 18,725	\$ -	\$ 18,725

### Administration

Administrative Office	\$ 815	\$ 815
Total	815	- 815
<b>Total Revenue</b>	<b>\$ 19,540</b>	<b>\$ - \$ 19,540</b>

<b>Grand Total (Net)</b>	<b>\$ 136,894</b>	<b>\$ 96,762</b>	<b>\$ 40,132</b>
--------------------------	-------------------	------------------	------------------







# HURON-CLINTON METROPOLITAN AUTHORITY

**AMENDED**

To: Board of Commissioners  
 From: Heidi Dziak, Senior Buyer  
 Project No: RFP 2017-024  
 Project Title: Purchases – Glow Products Resale  
 Location: Lake St. Clair, Stony Creek, Kensington, Hudson Mills, Willow and Lake Erie  
 Date: June 1, 2017

## Action Requested: Motion to Approve

That the Board of Commissioners' award RFP 2017-024 to Global Glow Toys, LLC to sell glow products during Metroparks fireworks at Stony Creek (June 23), Kensington (June 24), Lake Erie (June 25), Hudson Mills (June 28), Indian Springs (June 29), Lake St. Clair (June 30) and Willow (June 1) as recommended by Senior Buyer Heidi Dziak and staff.

**Fiscal Impact:** Global Glow Toys LLC will pay the Metroparks an \$1,000 commission fee per fireworks show and pay an additional 20 percent of gross sales over \$4,000.

**Scope of Work:** The vendor will sell a variety of glow products with pricing starting as low as \$1. The vendors will be clearly identifiable for Metroparks staff. In addition, Metroparks staff will be able to count and verify products prior to the start of selling and remove any products that are not appropriate.

**Background:** The proposed opportunity to sell glow products was competitively bid. The RFP was competitively bid and posted on the Michigan Intergovernmental Trade Network (MITN) site, which provided notice of the solicitation to 46 vendors, of which five (5) vendors downloaded the RFP. HCMA also emailed notice of the RFP to three (3) vendors.

Global Glow Toys LLC provided the only response received. The vendor has sold glow products at HCMA fireworks for the last several years.

<u>Vendor</u>	<u>Location</u>	<u>Price</u>
Global Glow Toys, LLC	St. Clair Shores, MI	\$1,000 per show plus 20% of gross sales over \$4,000

**Attachment: Photo of Global Glow Products**









# HURON-CLINTON METROPOLITAN AUTHORITY

To: Board of Commissioners  
 From: Michelle Cole, CFO  
 Subject: Approval – 2017/2018 Tax Levy Report  
 Date: May 31, 2017

## Action Requested: Motion to Approve

That the Board of Commissioners' (1) approve the 2017 Tax Rate Request forms at .2141 mills (formerly .2146 mills); and (2) approve the inclusion of "net" tax revenues of \$29,960,593 in the 2018 Budget as recommended by CFO Cole and staff.

**Summary:** Final 2017 Taxable Value figures used for the calculation of the Metroparks 2018 tax revenues have been received from the county treasurer's offices. At this time, it is necessary for the Board of Commissioners to certify the requested tax levy rate of .2141mills (formerly .2146 mills) for each county.

**Background:** The calculation of the Metroparks tax levy millage rate is controlled by the "Headlee" Millage Reduction Formula (Michigan Compiled Law 211.34d) and Proposal A (1994 Public Act 415). Once the Metroparks tax levy rate is calculated, it is applied to the "taxable values" throughout the five counties of Livingston, Macomb, Oakland, Washtenaw and Wayne.

The Metroparks "taxable value" for the five counties for 2017 is \$143.6 billion, an increase of \$3.8 billion (2.73 percent) from the 2016 value of \$139.8 billion. The Metroparks taxable value showed an overall positive trend, with all five counties having increased from the previous year. Livingston, Oakland and Washtenaw had the largest increases, all over 3 percent, with Macomb just under at 2.6 percent. The overall 2.7 percent increase is favorable to our long term planning.

In applying the 2017 taxable value figures to the Headlee Millage Reduction Factor calculation formula, with the permitted inflation rate multiplier of 1.009, the Metroparks will be permitted to levy .2141 mills (formerly .2146 mills) for 2018. For the first time in 13 years, the Metroparks has to decrease their levy rate due to the MRF calculation reaching below 1.000. The Metroparks is levying 85 percent of the original authorized millage of .2500 mills. It should be noted that our reduction factor was just under 1.000 this year and the Metroparks will most likely be in a rollback situation for the next tax year.

In applying the .2141 millage rate against the district's 2017 "taxable value" figures, anticipated "gross" tax revenues for 2018 will be \$30,750,593. The breakdown by county is as follows:

	2017/18 Levy	%	2016/17 Levy	%	Change
<b>Livingston</b>	\$ 1,811,872	5.9%	\$ 1,758,341	5.9%	3.0%
<b>Macomb</b>	\$ 5,560,949	18.1%	\$ 5,416,668	18.1%	2.6%
<b>Oakland</b>	\$ 11,700,581	38.0%	\$ 11,310,893	36.6%	3.3%
<b>Washtenaw</b>	\$ 3,382,464	11.0%	\$ 3,273,075	10.8%	3.2%
<b>Wayne</b>	\$ 8,294,726	27.0%	\$ 8,243,747	28.3%	0.6%
<b>Total</b>	\$ 30,750,593	100.0%	\$ 30,002,724	100.0%	2.4%

As the Authority has done for the last nine years, staff recommends estimating the amount of “captured” tax revenues and potential tax refunds and adjust the anticipated gross tax revenues down at the start of the budget year. This is due to (1) the number of tax abatement programs, which include Downtown Development Authorities (DDA), Local Development Finance Authorities (LDFA), Tax Incremental Finance Authorities (TIFA), Brownfield and Neighborhood Enterprise Zones; (2) the large number of communities that are utilizing them; and (3) the amount of Metroparks tax revenue that is being captured and refunded.

By booking this adjustment at the beginning of the budget year, the Metroparks are able to have a more accurate picture of the actual amount of tax revenue that should ultimately be collected in 2018. Based on trends from the last five years of data from the amount tax revenue captured and refunded, the following breakdown details the “net” tax revenues recommended to be used for the 2018 Budget.

	<b>2017/18 Gross Tax Levy</b>	<b>Estimated Captured Taxes</b>	<b>2017/18 Net Tax Levy</b>
<b>Livingston</b>	\$ 1,811,872	\$ (35,000)	\$ 1,776,872
<b>Macomb</b>	5,560,949	(25,000)	5,535,949
<b>Oakland</b>	11,700,581	(300,000)	11,400,581
<b>Washtenaw</b>	3,382,464	(80,000)	3,302,464
<b>Wayne</b>	8,294,726	(350,000)	7,944,726
<b>Total</b>	\$ 30,750,593	\$ (790,000)	\$ 29,960,593

The 2017 Budget was prepared based on anticipated net tax revenues of \$29,232,724. The recommended net tax revenue for 2018 is \$29,960,593, an increase of \$727,869. For 2018, the Metroparks budgeted revenue remains fairly close to the amount of tax revenues that were received in 2003, but still remains less than our peak year of 2009.

The Metroparks have received confirmation of the calculations of the 2017 tax millage rate and revenues from the State Department of Treasury, Assessment and Certification Division. At this time, it is necessary for the Board to certify the 2017 tax levy rate for each county.

**Attachment: 2009 – 2018 Tax Revenue Trends**



Property Tax Levy  
Historical Data 2011-2018  
Huron-Clinton Metroparks Authority

	2011	2012	2013	2014	2015	2016	2017	2018
<b>Livingston County</b>	1,668,672	1,598,178	1,571,188	1,591,642	1,630,959	1,728,131	1,785,988	1,780,872
<b>% of Total</b>	<b>5.3%</b>	<b>5.4%</b>	<b>5.6%</b>	<b>5.7%</b>	<b>5.7%</b>	<b>5.9%</b>	<b>5.9%</b>	<b>5.9%</b>
<b>Macomb County</b>	5,864,213	5,455,641	5,158,236	5,123,729	5,259,684	5,445,085	5,573,910	5,575,949
<b>% of Total</b>	<b>18.7%</b>	<b>18.6%</b>	<b>18.3%</b>	<b>18.2%</b>	<b>18.5%</b>	<b>18.6%</b>	<b>18.5%</b>	<b>18.5%</b>
<b>Oakland County</b>	11,369,758	10,517,997	10,217,237	10,253,527	10,454,311	10,840,213	11,487,605	11,434,581
<b>% of Total</b>	<b>36.2%</b>	<b>35.8%</b>	<b>36.2%</b>	<b>36.4%</b>	<b>36.8%</b>	<b>37.0%</b>	<b>38.1%</b>	<b>38.0%</b>
<b>Washtenaw County</b>	3,017,732	2,975,079	2,942,987	2,967,883	3,031,326	3,122,637	3,310,816	3,302,464
<b>% of Total</b>	<b>9.6%</b>	<b>10.1%</b>	<b>10.4%</b>	<b>10.5%</b>	<b>10.7%</b>	<b>10.7%</b>	<b>11.0%</b>	<b>11.0%</b>
<b>Wayne County</b>	9,499,230	8,830,546	8,296,643	8,209,161	8,058,277	8,171,801	8,030,567	7,994,726
<b>% of Total</b>	<b>30.2%</b>	<b>30.1%</b>	<b>29.4%</b>	<b>29.2%</b>	<b>28.3%</b>	<b>27.9%</b>	<b>26.6%</b>	<b>26.6%</b>
<b>Total Adjusted Levy</b>	<b>\$ 31,419,605</b>	<b>\$ 29,377,442</b>	<b>\$ 28,186,291</b>	<b>\$ 28,145,942</b>	<b>\$ 28,434,558</b>	<b>\$ 29,307,867</b>	<b>\$ 30,188,887</b>	<b>\$ 30,088,593</b>

2017 MRF=	(TOTAL 2016 TAXABLE VALUE - TAXABLE LOSSES) X 1.009
	2017 TAXABLE VALUE - TAXABLE VALUE ADDITIONS

2017 MRF=	139,805,503,619	-	1,881,248,134	1.009	<del>0.9975</del>
	143,627,242,079	-	4,116,834,081	=	0.9975

LEVY RATE = CURRENT YEAR MRF X PERMANENTLY REDUCED MILEAGE RATE

LEVY RATE = 0.9975 X 0.0002146 = 0.0002141

NOTE: The existing tax law states that:

- 1) the current year millage reduction fraction for 1994 and future years CANNOT exceed one (1.0000).
- 2) the "Headlee" millage reduction PERMANENTLY reduced the maximum rate authorized by law.
- 3) the growth of the Taxable Value is limited to the lower of the rate of inflation or 5%.
- 4) the levy rate must be rounded down per Public Act 38 effective 8/1/99.

The increasing number of tax abatement programs and the increasing number of cities and townships that establish these has caused HCM to estimate the amount of revenue "captured" by these communities and reduce the expected revenue accordingly. This will give a more accurate financial picture for budgeting purposes. Some of the programs are: DDA, LDFA, TIFA, and Brownfield Zone. Revenue is increased by Industrial and Commercial Facilities that are not in the original Taxable Value amount. The adjustment amount is the net effect of these and other miscellaneous items. Macomb County is the only county where Ind'l and Com'l increases are close to or exceed the abatement programs.

Under the directive of the State Tax Commission, the 2007 and future Taxable Values have been adjusted to exclude Renaissance Zones. Renaissance Zones have taxes levied for only local school district sinking funds and intermediate school district enhancement millages. In the past with Renaissance Zones included in the taxable values H.C.M.A. had a write down of tax revenue as is still the case for DDA, LDFA, TIFA, and Brownfield Zones.

For 1995 and future years the Taxable Value is different from the State Equalized Value due to the passage of Proposal A (PA 476-1996). The SEV for 2017 is \$178,252,249,768 vs. the Taxable Value of \$143,627,242,079. The impact of the lower Taxable Value being used in revenue calculations and the reduced millage rate due to the Headlee amendment results in lost revenue for H.C.M.A. of \$13,812,470 in 2017/18.





## HURON-CLINTON METROPOLITAN AUTHORITY

To: Board of Commissioners  
 From: Mike Brahm-Henkel, Manager of Engineering  
 Project No: 900-17-009  
 Project Title: Bids – Hike-Bike Trail Crack Filling and Sealcoating  
 Project Type: Major Maintenance  
 Location: Lake St. Clair, Stony Creek, Indian Springs, Kensington, Hudson Mills, Lower Huron and Willow Metroparks  
 Date: June 1, 2017

Bids Received: May 18, 2017 at 2:00 p.m.

### **Action Requested: Motion to Approve**

That the Board of Commissioners' award Contract No. 900-17-009 to the low responsive, responsible bidder, Wolverine Sealcoating, LLC in the amount of \$36,573 as recommended by Manager of Engineering Mike Brahm-Henkel and staff.

**Fiscal Impact:** This project is a budgeted repair in the amount of \$28,000. Additional funding is available from Wolcott Road and Lot Crack Filling in the amount of \$4,000, which is not needed at this time and \$4,573 from the estimated Delhi and Hudson Mills Road and Lot Crack Filling future project.

**Scope of Work:** There are two items of work for this project. One item is filling the cracks of bike trail surface and the second item is hike-bike trail seal coating and pavement striping at Indian Springs Metropark. The work is to include furnishing all labor, equipment and materials necessary for hike-bike trail crack filling and seal coating at Indian Springs.

**Background:** The project was bid on a unit price basis per pound of joint sealant, with a total contract amount equal to the budgeted amount of \$28,000 and on a per unit price for the sealcoating. Wolverine was chosen because they are providing the most material for the budgeted amount, which is the lowest unit price per pound of material as compared to the other bidders. The project is bid on a per pound basis in order to be able to track the amount of material that is being used. Since there are numerous cracks in the surface and each crack takes a varying amount of sealant, it is more efficient to track the material as it is added to the heating kettle. The kettle is then used to heat the bricks of material before it is spread on the paved surface.

As part of the pavement maintenance management program, cracks in the pavement surface are filled with a hot poured sealant to help prevent the intrusion of water through the surface. This practice helps to prolong the life of the surface. The crack filling also helps to provide a smooth surface for the bike trail users.

The current hike-bike pavement surface on the hike-bike trail at Indian Springs is contracting due to the existing binder in the asphalt weathering and drying out. In order to help preserve and extend the life of the surface the application of a seal coat over the whole surface is recommended to help provide a top coat barrier to the elements.

<u>Contractor</u>	<u>City</u>	<u>Unit Price (\$/lbs)</u>	<u>Total Lbs.</u>	<u>Amount</u>
Wolverine Seal Coating LLC	Jackson	\$1.15	24,346	\$28,000.00
True North Asphalt	Rochester Hills	\$1.80	15,554	\$28,000.00
Michigan Joint Sealing, Inc.	Farmington Hills	\$2.67	10,500	\$28,000.00

***Seal Coating and Pavement Striping – Indian Springs***

Wolverine Seal Coating LLC	\$ 8,573.00
True North Asphalt	\$ 6,305.40
Michigan Joint Sealing	\$18,926.80

## Budget amount for Contract and Administration

Park-Wide Bike Trail Crack Filling	\$28,000.00
Wolcott Road and Lot Crack Filling	\$ 4,000.00
Delhi/Hudson Mills Road and Lot Crack Filling	\$ 4,573.00
Total	\$36,573.00

## Work Order Amount

Contract Amount – Wolverine Seal Coating LLC	\$36,573.00
Contract Administration	\$ 2,000.00
Total Proposed Work Order Amount (rounded)	\$38,573.00

*This project was reported and publicly advertised in the following construction reporting outlets: MITN, Construction Association of Michigan, Reed Construction Data, Construction News Corporation, Construction News Service, HCMA Website, Builders Exchange of Michigan, McGraw Hill Dodge, Builders Exchange of Lansing and Central Michigan.*

**Note:** the following reviewed plans but don not submit a bid; Allied Building Service Company, Detroit; G2 Consulting Group LLC, Troy, Mullins Asphalt LLC, Jackson, Sleeves Consulting Services, Boulder City; TSI, New York.







# HURON-CLINTON METROPOLITAN AUTHORITY

To: Board of Commissioners  
 From: Mike Brahm-Henkel, Manager of Engineering  
 Project No: 509-17-541  
 Project Title: Bids – Tollbooth Replacement  
 Project Type: Major Maintenance  
 Location: Stony Creek, Metropark  
 Date: June 1, 2017

Bids Received: May 16, 2017

## Action Requested: Motion to Approve

That the Board of Commissioners award Contract No. 509-17-541 to the low responsive, responsible bidder, Dave's Contracting, Inc. in the amount of \$48,440 as recommended by Manager of Engineering Mike Brahm-Henkel and staff.

**Fiscal Impact:** The project was budgeted at \$65,000 and is under budget by \$16,560.

**Scope of Work:** The project includes the removal and replacement of the middle tollbooth, which includes disconnecting and connecting all cabling and power to the booth and installing a new vehicle detection system for all lanes. In addition, the work includes the replacement of the doors on the two adjacent tollbooths.

**Background:** The existing middle tollbooth at Stony Creek is the most used of the three booths on site. The existing floor and metal has degraded and rusted away and the doors do not close easily. The degradation of the metal is primarily due to the salt from the winter months where it gets tracked in and gets sprayed by passing vehicles.

<u>Contractor</u>	<u>City</u>	<u>Amount</u>
Dave's Contracting Inc.*	Dearborn	\$48,400.00
*(Note only one bid was received)		
Budget Amount for Contract Services and Administration		\$65,000.00
Work Order Amount		
Contract Amount – Dave's Contracting, Inc.		\$48,400.00
Contract Administration		<u>\$ 2,000.00</u>
Total Proposed Work Order Amount (Rounded)		<u>\$ 50,400.00</u>

*This project was reported and publicly advertised in the following construction reporting outlets: MITN, Construction Association of Michigan, Reed Construction Data, Construction News Corporation, Construction News Service, HCMA Website, Builders Exchange of Michigan, McGraw Hill Dodge, Builders Exchange of Lansing and Central Michigan.*

**\*\*Note** the following reviewed plans but don not submit a bid; International Controls & Equipment, JSS - Macomb, LLC, LaBelle Development, Meridian Contracting Group, PAR-KUT INTERNATIONAL, INC., SOLE' CONSTRUCTION, INC., Swiatko Enterprises, Inc., Tollis Development, Top Lighthouse Construction LLC, Warren Contractors & Development Inc., Washtenaw Contractors Association, WCI Contractors, Inc., White Pine Building and Development LLC

**Attachment: Stony Creek Tollbooth Photos**













# HURON-CLINTON METROPOLITAN AUTHORITY

To: Board of Commissioners  
 From: Mike Brahm-Henkel, Manager of Engineering  
 Subject: Approval – Temporary and Highway Easement  
 Location: Stony Creek Metropark  
 Date: June 1, 2017

## Action Requested: Motion to Approve

That the Board of Commissioners' approve the Temporary and Highway Easement as requested by the Oakland County Road Commission as recommended by Manager of Engineering Mike Brahm-Henkel and staff.

**Fiscal Impact:** Payments to be received in the amount of \$ 30.00 for the temporary easement and \$450.00 for the Highway easement.

**Background:** The Road Commission for Oakland County (RCOC) is proposing to replace the McClure Drain culvert adjacent to Stony Creek Metropark located along Snell Road in Oakland Township.

The existing 8-foot diameter, corrugated metal pipe culvert is deteriorating and heavy erosion of the roadway embankment is occurring around the culvert inlet. To maintain the integrity of the road and improve the stream crossing the existing culvert needs to be replaced.

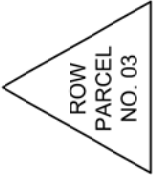
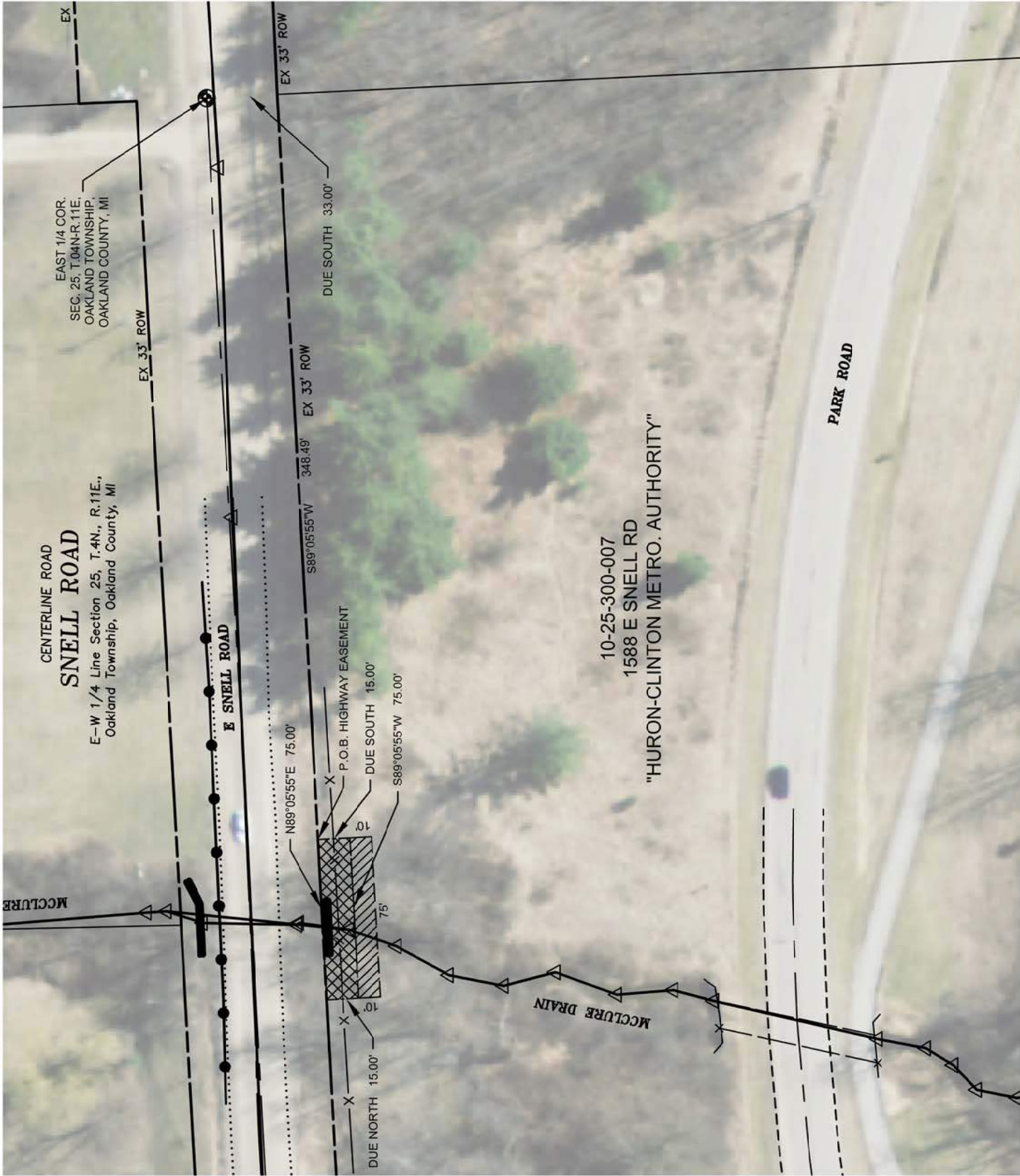
In order to proceed with the project, the RCOC needs to obtain a temporary and highway easement over Stony Creek Metropark property. The easements would grant the RCOC the rights needed in order to construct and install the new culvert. The temporary easement requested is 10-feet by 75-feet and the highway easement is 15-feet by 75-feet.

The easement documentation has been reviewed by Miller Canfield.

**Attachments:** Aerial Parcel Sketch  
 Plan Sheets  
 Appraisal  
 Exhibit A  
 Exhibit B  
 Easement Park Map  
 Temporary Easement Documentation  
 Highway Easement Documentation



AERIAL PARCEL SKETCH  
PARCEL 10-25-300-007  
1588 E SNELL ROAD




HIGHWAY EASEMENT  
TEMPORARY EASEMENT  
FOR CONSTRUCTION



SCALE: 1" = 60'

PURCHASED HIGHWAY  
EASEMENT -  
TEMPORARY EASEMENT -  
FOR CONSTRUCTION

<b>ROAD COMMISSION</b>  BEVERLY HILLS, MICHIGAN PHONE: 877-868-4804 WEB: WWW.RCOCWEB.ORG	PROJECT NO. 52623	SNELL ROAD PARCEL 10-25-300-007 SECTION 25 T.4N., R.11E., OAKLAND TOWNSHIP, OAKLAND COUNTY, MICHIGAN	DESIGN PHASE
	DATE 01/27/17		DESIGN PHASE SHEET NO. 1 OF 1

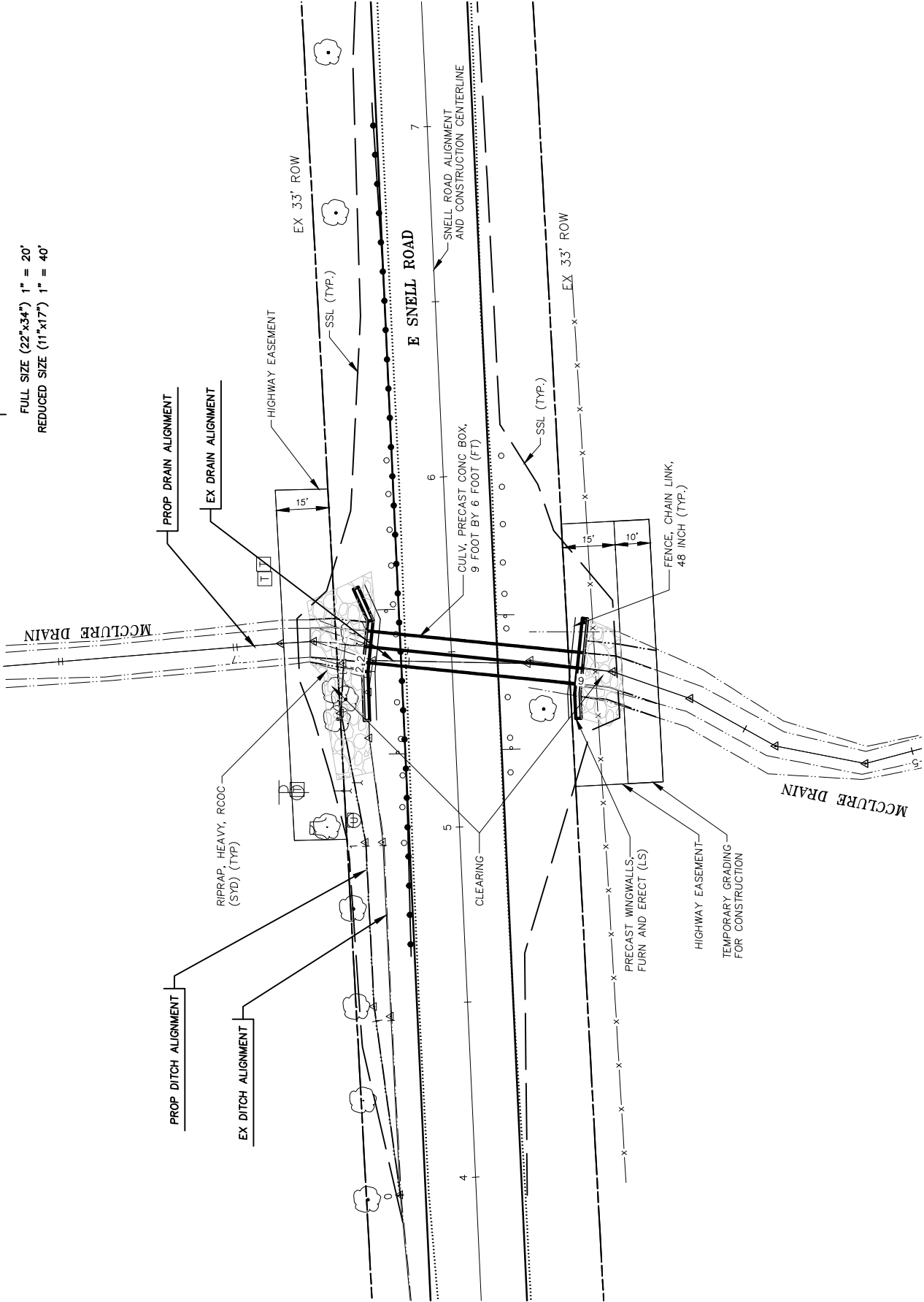




Know what's below.  
Call before you dig.



FULL SIZE (22"x34") 1" = 20'  
REDUCED SIZE (11"x17") 1" = 40'



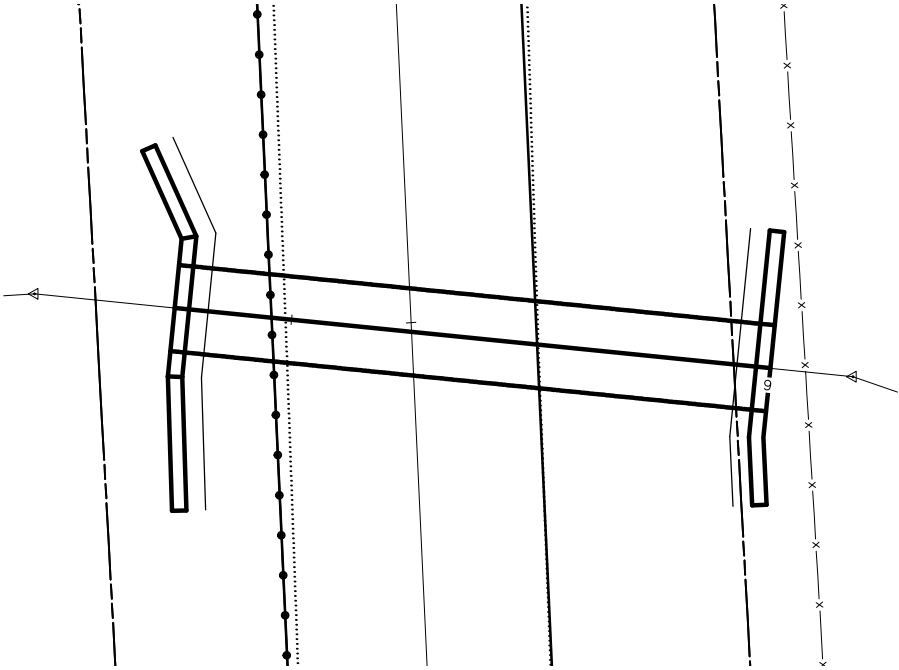
## CULVERT PLAN

McClure Drain

SCALE: 1" = 20'



FULL SIZE (22"x34") 1" = 10'  
REDUCED SIZE (11"x17") 1" = 20'



## CULVERT PLAN

SCALE: 1" = 10'

QUANTITIES - THIS SHEET ONLY		
PAY ITEM	QTY	UNIT
EROSION CONTROL, FILTER BAG	0	EA
EROSION CONTROL, TURBIDITY CURTAIN, DEEP	0	FT
SUBGRADE UNDERCUTTING, 3 BY 1	0	CYD
EXCAVATION, FDN	0	CYD
BACKFILL, STRUCTURE, CIP	0	CYD
GEOTEXTILE FABRIC, TYPE NW 8	0	SYD
UNDERDRAIN, FDN, 6 INCH	0	FT
UNDERDRAIN, OUTLET, 6 INCH	0	FT
UNDERDRAIN, OUTLET ENDING, 6 INCH	0	EA
FENCE, CHAIN LINK, 48 INCH	0	FT
CULV, PRECAST, CONC BOX, 9 FOOT BY 6 FOOT	0	FT
PRECAST WINGWALLS, FURN AND ERECT	0	LS
MEMBRANE, PREFORMED WATERPROOFING	0	SYD
CONC SURFACE COATING	0	SYD
STEEL SHEET PILING, TEMP	0	SFT
FENCE, CHAIN LINK, 48 INCH	0	FT
RIPRAP, HEAVY, RCOC	0	SYD

**ROAD COMMISSION**  
for **OAKLAND COUNTY**  
BEVERLY HILLS, MICHIGAN  
PH: 247-859-4504    E: 248-859-4504

PROJECT NO. 52623  
DATE 03/17/17

CULVERT PLAN

SNELL RD OVER MCCLURE DRAIN  
HERON DR TO BALMORAL WAY

DESIGN PHASE

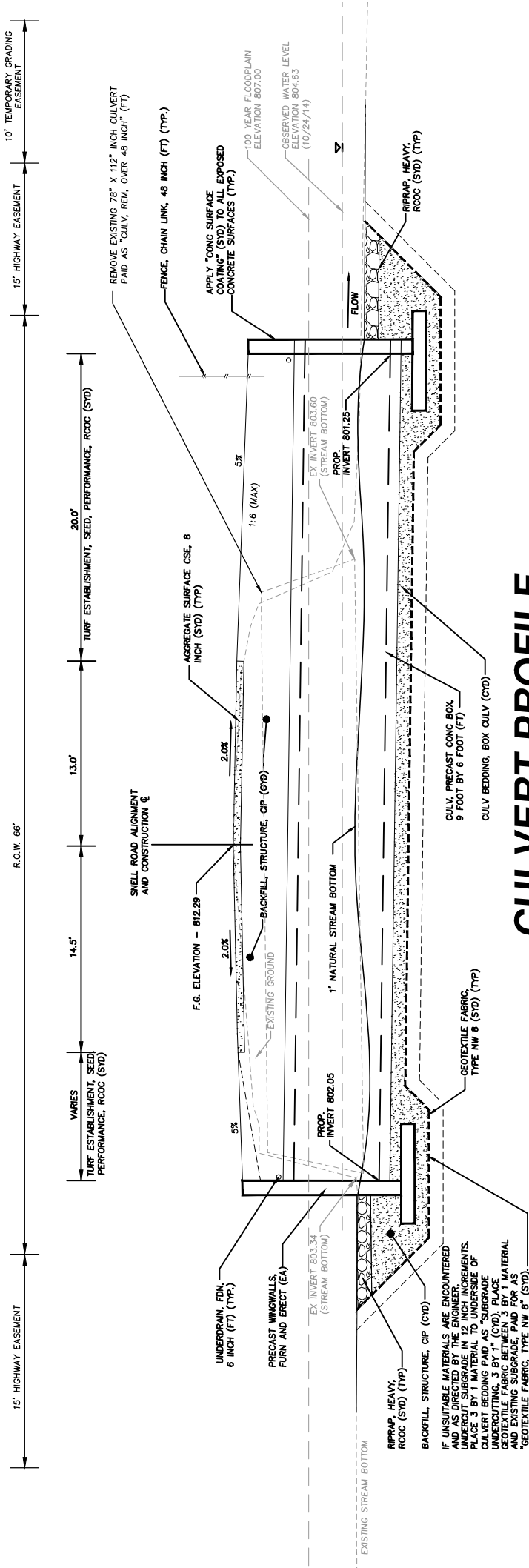
SHEET NO. 18 OF 21



Know what's below.  
Call before you dig.

T:\PROJECTS\52623 - SNELL ROAD OVER MCCLURE DRAIN\PLAN PRODUCTION\MASTER PLANS\52623-CULVERT-PLAN SHEETS Apr. 13, 17 - 7:55 AM

SCALE: 1" = 10'



## CULVERT PROFILE

SCALE: 1" = 5'

SUMMARY OF HYDRAULIC ANALYSIS								
FLOOD DATA		EXISTING			PROPOSED			
		DISCHARGE (CFS)	WATER SURF. ELEV. AT U/S FACE OF STR. (Ft)	VELOCITY IN D/S CHANNEL (ft/s)	WATER SURF. ELEV. AT U/S FACE OF STR. (Ft)	VELOCITY IN D/S CHANNEL (FPS)	WATERWAY AREA AT D/S FACE (SFT)	CHANGE IN W.S. ELEV. U/S OF PROPOSED STR. (Ft)
50-YEAR		280	809.17	8.36	807.24	5.26	40.5	-1.93
100-YEAR		350	810.19	8.70	808.69	6.48	40.5	-1.50
Maximum bridge area below low chord (square feet)		40.5						
The Drainage area contributory to this crossing (Square Miles)		3.6						
Elevations are based on (Datum):		NAVD88						
The water surface or energy grade elevations shown above are to be used for comparison purposes only and are not to be used for establishing a regulatory floodplain.								
50 Year and 100 Year Elevations are for comparison only.								

ROAD COMMISSION  
for OAKLAND COUNTY  
BEVERLY HILLS, MICHIGAN  
PHONE: 577-859-4504    WEB: WWW.RCSWEB.ORG

PROJECT NO. 52623

DATE 03/17/17

CULVERT PROFILE AND SECTIONS

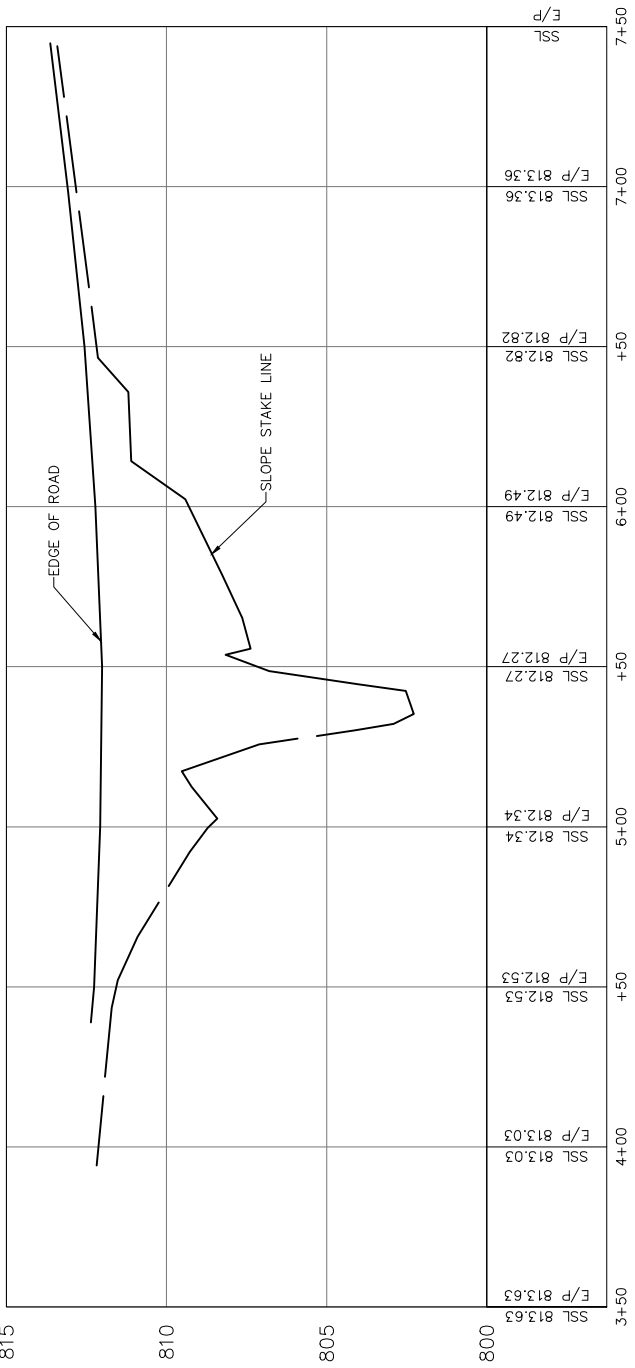
SNELL RD OVER MCCLURE DRAIN  
HERON DR TO BALMORAL WAY

DESIGN PHASE  
SHEET NO. 19 OF 21

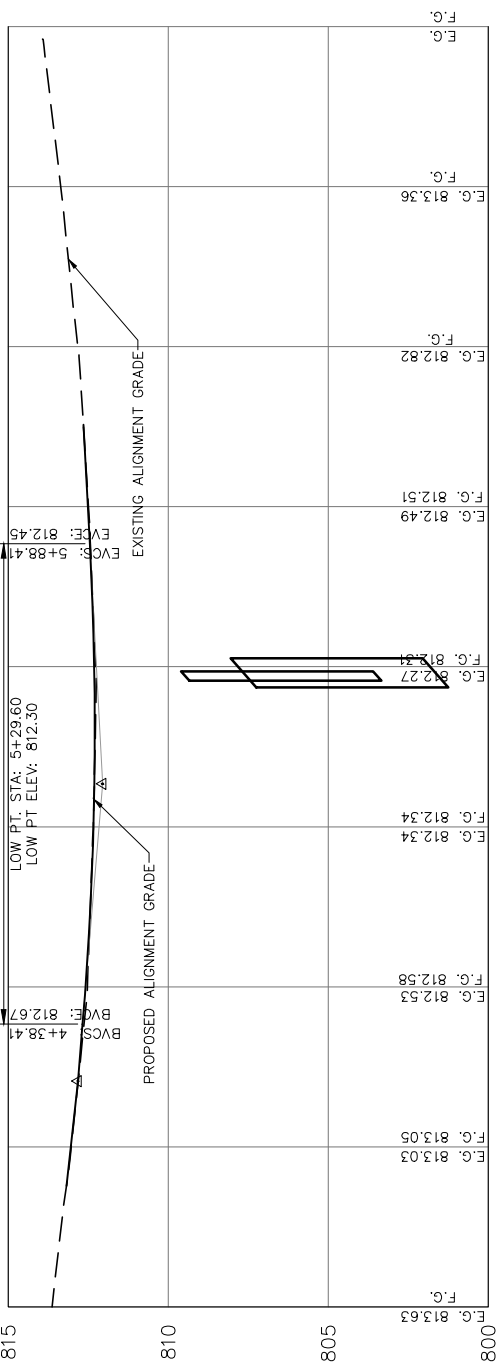


T:\PROJECTS\52623 - SNELL ROAD OVER MCCLURE DRAIN\MASTER PLANS\52623-SNELL RD PROFILE Apr. 10, 17 - 11:36 AM

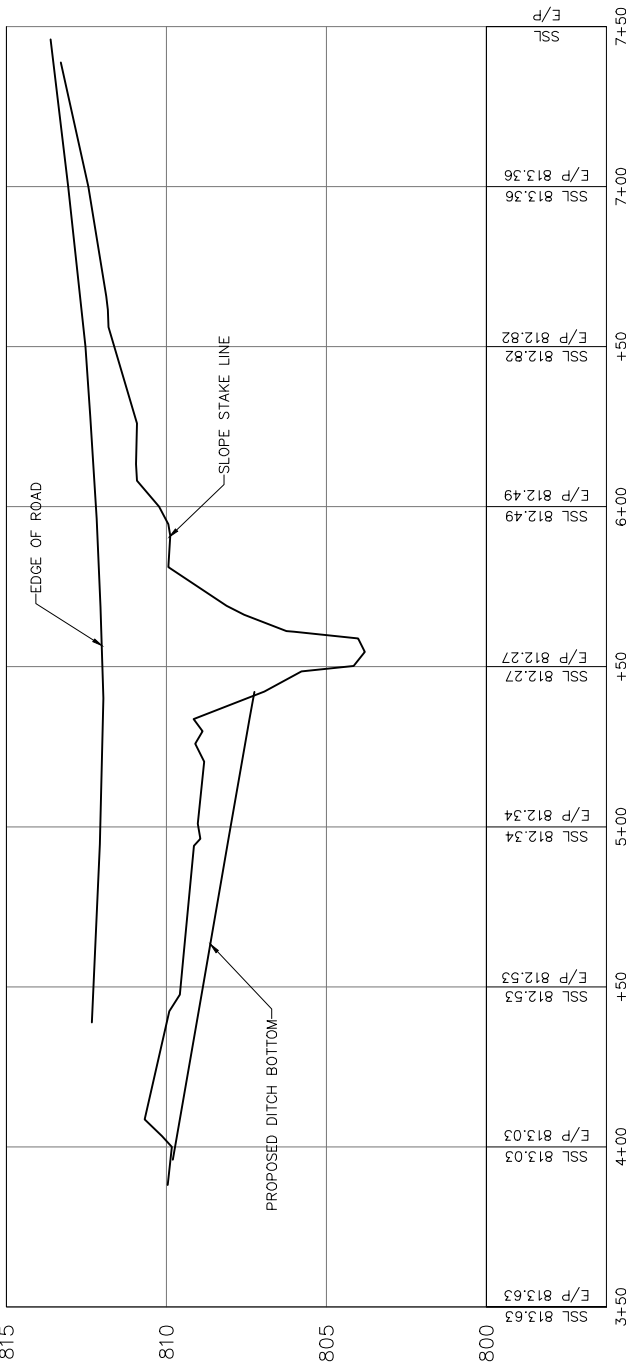
RIGHT – PROPOSED EDGE OF PAVEMENT AND SLOPE STAKE LINE



EXISTING GROUNDLINE AND PROPOSED PLAN GRADE

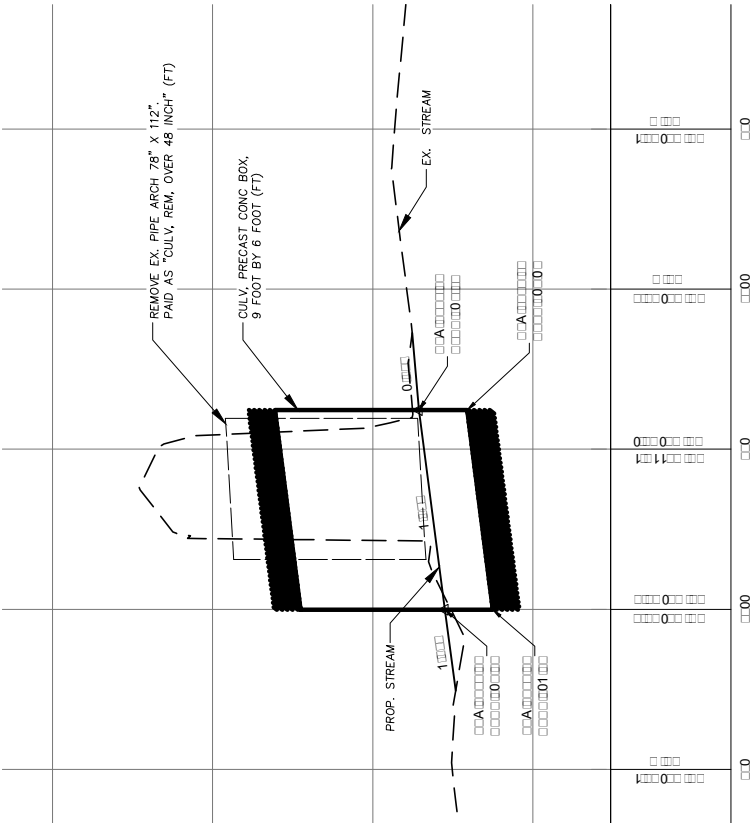


LEFT – PROPOSED EDGE OF PAVEMENT AND SLOPE STAKE LINE



PROJECT NO. 52623		PROJECT NAME: SNELL RD OVER MCCLURE DRAIN		PROJECT NO. 52623	
ENGINEER: SQUAD 2		HERON DR TO BALMORAL WAY		DATE	
		SNELL RD OVER MCCLURE DRAIN		03/17/17	
		HERON DR TO BALMORAL WAY		DESIGN PHASE	
				SHEET NO.	
				20 OF 21	

## STREAM PROFILE

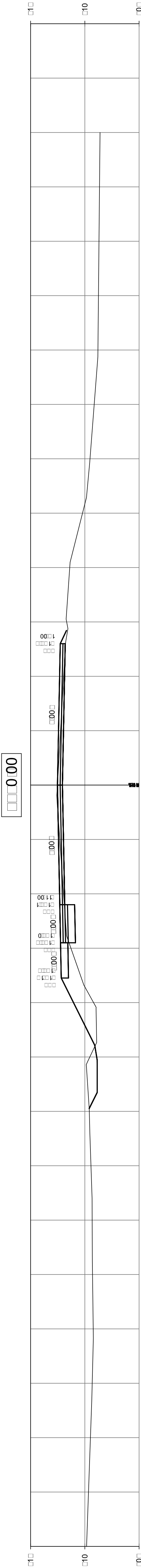
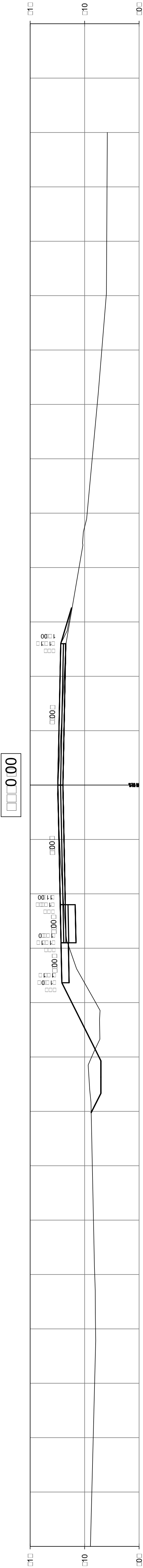
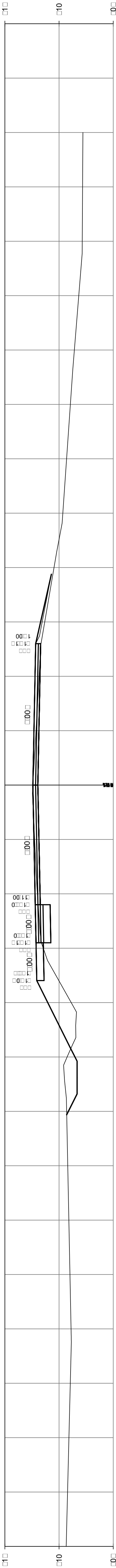


FULL SIZE (22"x34") 1" = 30'  
REDUCED SIZE (11"x17") 1" = 60'

CONTROL SECTION  
MDOT JOB NO. ###  
###



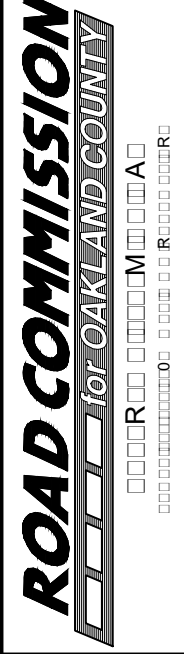
R:\D\000D 0000 311\1111 1' 010'  
R:\D\000D 0000 311\1111 1' 010'



CONTROL SECTION  
MDOT JOB NO. #####

PROJECT NAME: SNELL ROAD CULVERT  
DEQ SUBMITTAL

PROJECT NO. 52623  
ENGINEER: SQUAD 2

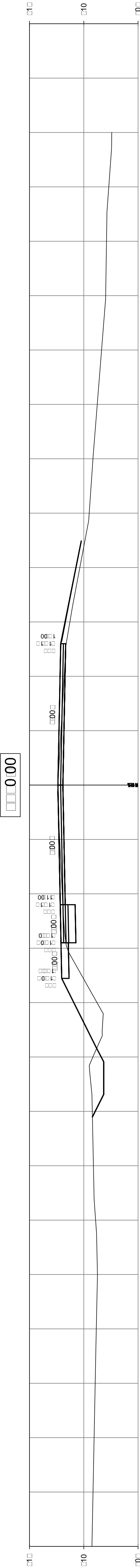
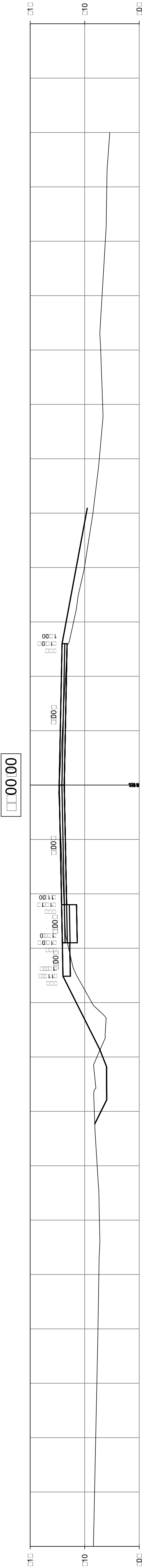
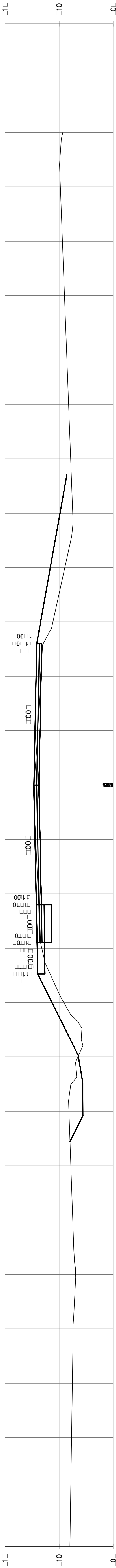


PROJECT NO. 000000  
DATE 10/01/10

SECTION SHEET - (1)  
SNELL ROAD CULVERT  
DEQ SUBMITTAL

DESIGN PHASE  
D00000 00A00  
SHEET NO.  
1 000

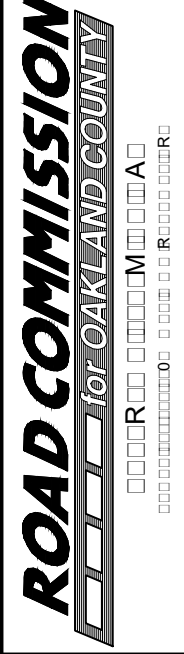
R:\D\000D 0000 311\1111 1" 010  
R:\D\000D 0000 311\1111 1" 010



CONTROL SECTION  
MDOT JOB NO. #####

PROJECT NAME: SNELL ROAD CULVERT  
DEQ SUBMITTAL

PROJECT NO. 52623  
ENGINEER: SQUAD 2



PROJECT NO. 000000  
DATE 10/01/10

SECTION SHEET - (2)  
SNELL ROAD CULVERT  
DEQ SUBMITTAL

DESIGN PHASE  
D00000 00A00  
SHEET NO. 00000







# SHORT FORM APPRAISAL

Snell Road Culvert; Project Number 52623; Parcel 3; Sidwell 10-25-300-007

Property Ownership	Huron-Clinton Metropolitan Authority
Property Location	1588 E. Snell Rd Rochester, MI
Improvements	None affected
Zoning	Regional Park
Highest and Best Use	Residential
Total Area (S.F.)	14,208,542
Total Area (Acre)	326.18
Net Area of Permanent Highway Easement (S.F.)	1,125
Net Area of Temporary Easement (S.F.)	750
Interest Appraised	Fee Simple
Reason for Acquisition or Easement	Road improvement
Method of Appraisal Performed	Value of easements based on the Sales Comparison Approach

No damages to the remainder have been observed by the appraiser.

## Value Determination

Unit Value Estimate (S.F.)		\$0.40
Net Area of Highway Easement (S.F.)		1,125
Value of Highway Easement	unitxarea	\$450
Net Area of Temporary Easement (S.F.)		750
Unit Factor (Rate)	1 year lease	0.10
Estimate of Temporary Easement Value		\$30
Trees		\$0

## ESTIMATE OF JUST COMPENSATION

**\$480**

### Certification

I certify that, to the best of my knowledge and belief: the statements of fact contained in this appraisal are true and correct; the analyses, opinions, and conclusions are my personal, impartial, and unbiased professional analyses, opinions, and conclusions; I have no present or prospective interest in the property that is the subject of this appraisal, and no personal interest with respect to the parties involved; I have no bias with respect to the property that is the subject of this report or to the parties involved in this assignment; my engagement in this assignment was not contingent upon developing or reporting predetermined results; I have made a personal inspection of the property and performed no services there within the prior 36 months; no one provided significant professional assistance to the person signing this report.

\_\_\_\_\_

2/23/2017  
Date

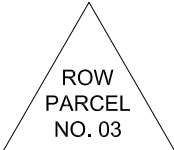


EXHIBIT A

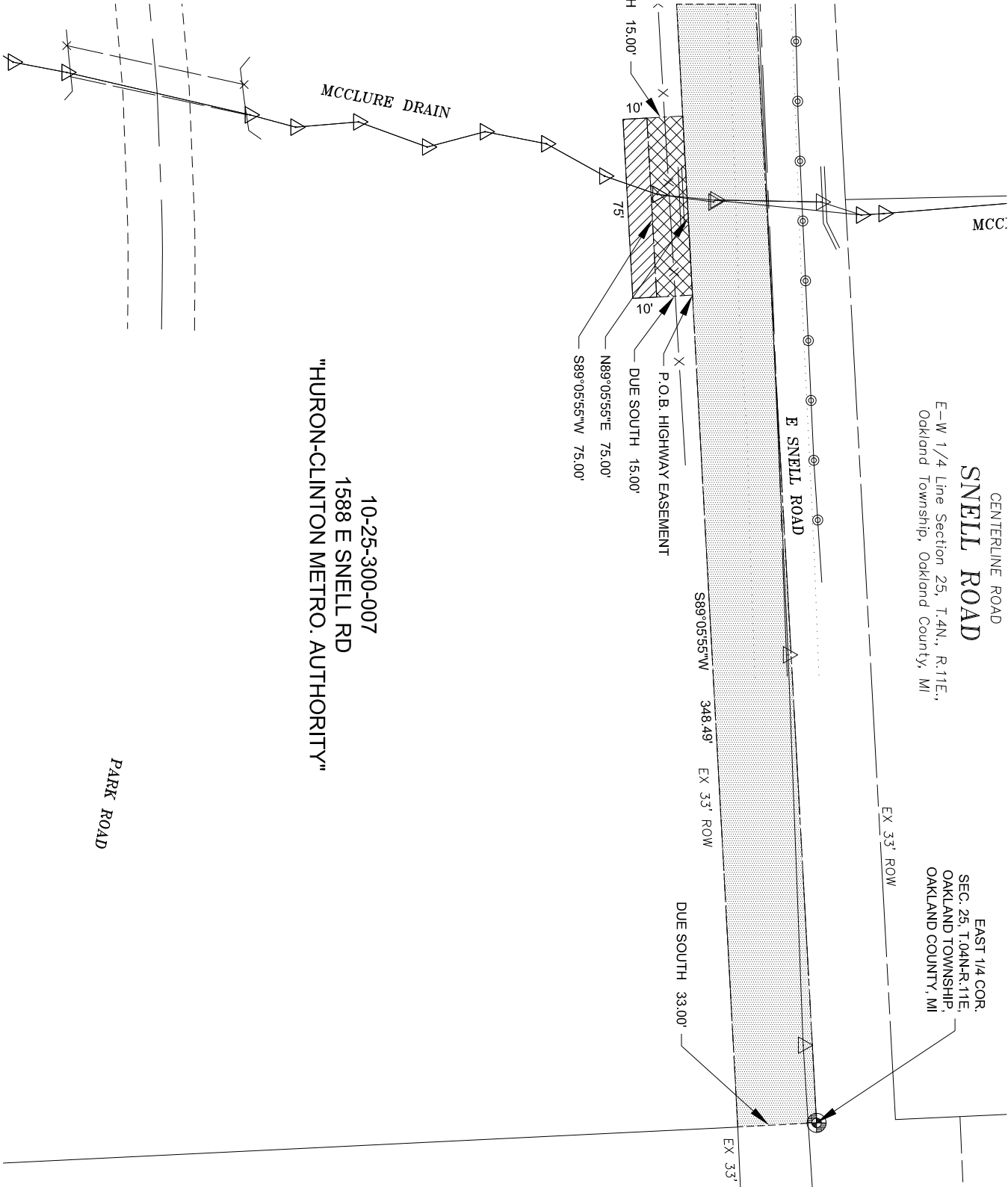
PARCEL 10-25-300-007  
1588 E SNELL ROAD



SCALE: 1" = 60'



HIGHWAY EASEMENT  
TEMPORARY EASEMENT FOR CONSTRUCTION



CENTERLINE ROAD  
**SNELL ROAD**  
E-W 1/4 Line Section 25, T.4N., R.11E.,  
Oakland Township, Oakland County, MI

EAST 1/4 COR.  
SEC. 25, T.04N-R.11E,  
OAKLAND TOWNSHIP,  
OAKLAND COUNTY, MI

10-25-300-007  
1588 E SNELL RD  
"HURON-CLINTON METRO. AUTHORITY"

Park Road

LAND AREAS	
PARCEL	= 14,208,542 SFT
EXISTING ROW	= 165,098 SFT
ACQUIRED ROW	= 1,125 SFT
HIGHWAY EASEMENT (TOTAL ROW)	= 166,223 SFT
TEMPORARY EASEMENT	= 750 SFT

EXISTING HIGHWAY EASEMENT –

PURCHASED HIGHWAY EASEMENT –

TEMPORARY EASEMENT – FOR CONSTRUCTION

BEARINGS BASED ON LEASE RECORDED IN LIBER 39258,  
PAGE 194 OAKLAND COUNTY RECORDS.

**ROAD COMMISSION**  
for OAKLAND COUNTY

RIGHT OF WAY DIVISION

PHONE:877-858-4804 WEB:WWW.RCOCWEB.ORG

SNELL ROAD  
PARCEL 10-25-300-007

SECTION 25 T.4N., R.11E.,  
OAKLAND TOWNSHIP,  
OAKLAND COUNTY, MICHIGAN

REV. DATE: XX-XX-XXXX
DATE: 01-27-2017
PROJECT NUMBER: 52623
DRAWN BY: RJL
CHECKED BY: ATP/JOB
SHEET: 1 OF 1





**EXHIBIT "B"**

Snell Road  
Project No. 52623  
Parcel 03

**Parent Parcel Description**

Land in the Township of Oakland, County of Oakland, Michigan, described as follows:

The South ½ of Section 25, Except beginning at the West ¼ corner; thence South 89°34'00" East, 324.13 feet; thence South 00°34'00" East, 904.62 feet; thence North 84°54'00" West, 331.18 feet; thence North 00°12'32" West, 877.59 feet to the Point of Beginning, Town 4 North, Range 11 East, Township of Oakland, Oakland County, Michigan.

**Highway Easement  
Parcel 03**

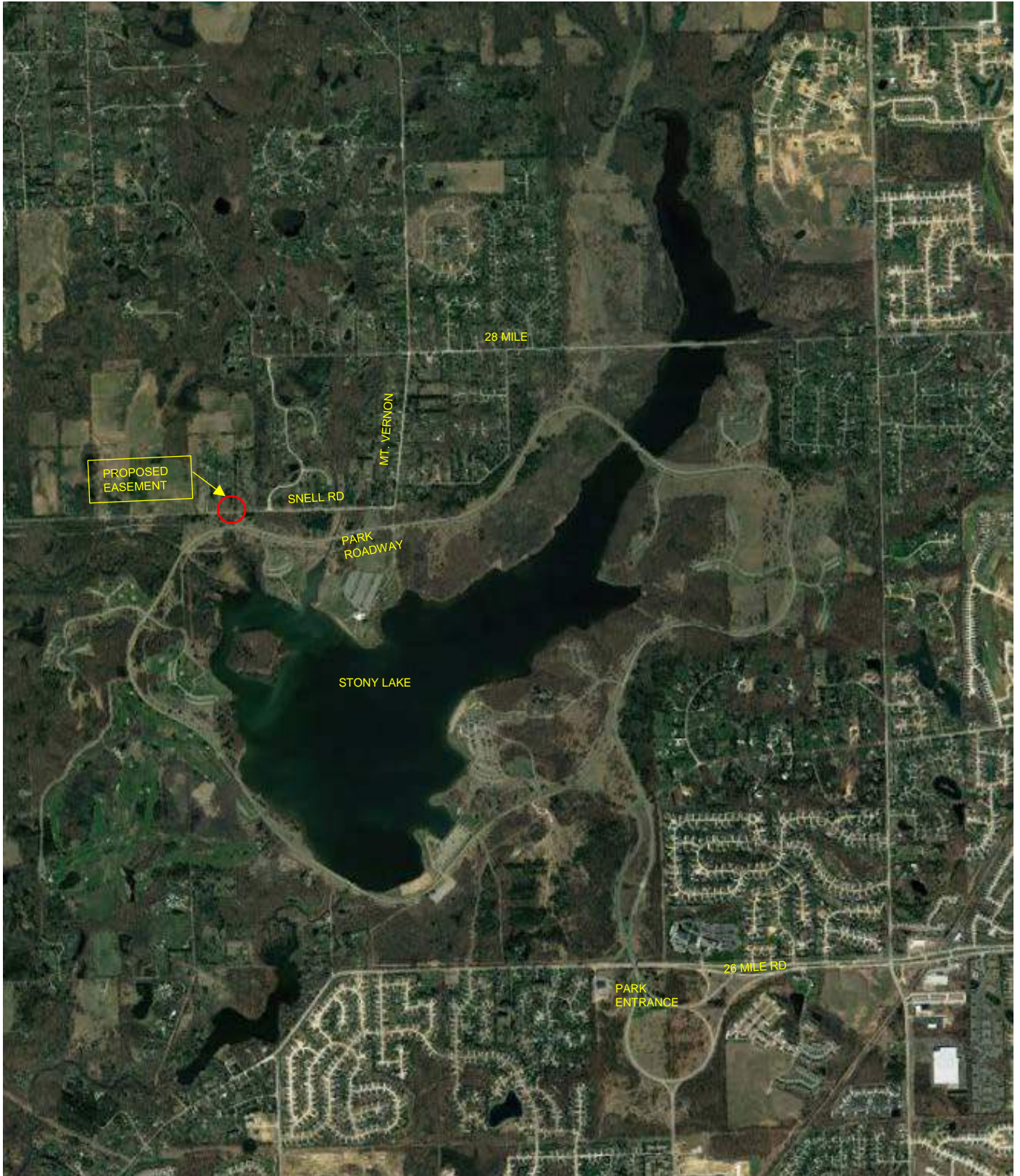
Land in the Township of Oakland, County of Oakland, and State of Michigan, described as:

Part of the South ½ of Section 25, Town 4 North, Range 11 East, described as commencing at the East ¼ corner of said Section 25; thence Due South 33.00 feet; thence South 89°05'55" West, 348.49 feet; to the point of beginning for **Highway Easement**; thence Due South 15.00 feet; thence South 89°05'55" West, 75.00 feet; thence Due North 15.00 feet; thence North 89°05'55" East, 75.00 feet to the point of beginning.

Tax Parcel No. 10-25-300-007  
Commonly known as 1588 E Snell Road

Dated: January 24, 2017





## **TEMPORARY EASEMENT**

**KNOW ALL PERSONS** that **HURON-CLINTON METROPOLITAN AUTHORITY**, a public body corporate organized and operating under the provisions of Act 147, Public Acts of Michigan 1939, as amended ("Grantor"), whose address is 13000 High Ridge Drive, Brighton, MI 48114, hereby grants to the **BOARD OF COUNTY ROAD COMMISSIONERS OF THE COUNTY OF OAKLAND ("Board")**, State of Michigan, a public body corporate, located at 31001 Lahser Road, Beverly Hills, Michigan 48025, an easement for a temporary period of time ("Temporary Easement") in the construction of the **Snell Road Culvert ("Project")**, being Project Number **52623**, at the following described premises ("Property") situated in the **Township of Oakland**, County of Oakland, State of Michigan.

Commonly known as: **1588 E. Snell Road, Rochester, MI 48306**  
(Part of) Tax Parcel No.: **10-25-300-007**

**SEE PARCEL DRAWING, ATTACHED AS EXHIBIT "A," AND  
LEGAL DESCRIPTION, ATTACHED AS EXHIBIT "B,"  
BOTH OF WHICH ARE INCORPORATED BY REFERENCE HEREIN**

This Temporary Easement is conveyed for the sum of **\$30.00** and shall expire at the completion of the Project. The purpose of this Temporary Easement is to grant to the Board the right to move workers, equipment, and materials on, over, and through the Property and to store equipment, material, and excavated matter on the Property. This Temporary Easement includes, but is not limited to, the consent of the Grantor to the removal of any trees, shrubs, and/or vegetation, to grading, to the temporary occupancy of the Property by public utilities, and to other matters which, in the sole discretion of the Board, may be necessary in connection with the Project. Grantor waives further notice of such actions.

The permission stated in this Temporary Easement shall begin on the date the Project begins and shall end on the date the Project is completed. The work described above shall be constructed and/or restored, as may be applicable in the sole discretion of the Board, in a workmanlike manner and in accordance with applicable state and county standards. Upon completion of the work described above, the Board and its agents shall have no further or ongoing responsibilities in relation to the work described.

This Temporary Easement runs with the land and shall bind the Grantor and the Grantor's heirs, representatives, successors, and assigns. This Temporary Easement contains the entire understanding of the Grantor and the Board, and there are no other verbal promises between the Grantor and the Board except as shown herein.

**WHEREFORE**, upon approval by the Board, the undersigned Grantor hereby creates, confirms, and conveys the Temporary Easement described herein.

**HURON-CLINTON METROPOLITAN AUTHORITY,**  
*a public body corporate organized and operating under  
the provisions of Act 147, Public Acts of Michigan 1939,  
as amended*

By: \_\_\_\_\_

\_\_\_\_\_  
Print name

Its: \_\_\_\_\_

COUNTY OF OAKLAND )

) SS

STATE OF MICHIGAN )

On this \_\_\_\_\_ day of \_\_\_\_\_ 2017, \_\_\_\_\_  
executed the foregoing document before me and, being duly sworn, stated that he/she is  
the \_\_\_\_\_ of **HURON-CLINTON METROPOLITAN  
AUTHORITY**, a public body corporate organized and operating under the provisions of  
Act 147, Public Acts of Michigan 1939, as amended, and that he/she executed the  
foregoing document on behalf of HURON-CLINTON METROPOLITAN AUTHORITY, a  
public body corporate organized and operating under the provisions of Act 147, Public  
Acts of Michigan 1939, as amended with its full authority and as its free act and deed.

\_\_\_\_\_  
Notary Public

My commission expires: \_\_\_\_\_

\_\_\_\_\_ County, Michigan

Acting in the County of \_\_\_\_\_

Drafted by:  
Jason C. Benedict  
31001 Lahser Road  
Beverly Hill, MI 48025

When recorded return to:

**SHANNON J. MILLER, CLERK'S OFFICE (OAK04)**  
**THE BOARD OF COUNTY ROAD COMMISSIONERS OF THE COUNTY OF OAKLAND**  
**31001 LAHSER ROAD, BEVERLY HILLS, MI 48025**

Project: **Snell Road Culvert** Project No.: **52623**

Parcel No.: **3**

(Part of) Tax Parcel No.: **10-25-300-007**

Recording Fee\_\_\_\_\_ Revenue Stamps\_\_\_\_\_

### **HIGHWAY EASEMENT**

**KNOW ALL PERSONS** that **HURON-CLINTON METROPOLITAN AUTHORITY**, a public body corporate organized and operating under the provisions of Act 147, Public Acts of Michigan 1939, as amended ("Grantor(s)"), whose address is **13000 High Ridge Drive, Brighton, MI 48114**, hereby grants to the **BOARD OF COUNTY ROAD COMMISSIONERS OF THE COUNTY OF OAKLAND** ("Board"), State of Michigan, a public body corporate, located at 31001 Lahser Road, Beverly Hills, Michigan 48025, an easement for all public highway purposes ("Highway Easement") and to construct, operate, maintain, repair, and/or replace roadways, utilities, and other infrastructure improvements in, over, under, upon, and through the following described premises ("Property") situated in the **Township of Oakland**, County of Oakland, State of Michigan.

Commonly known as: **1588 E. Snell Road, Rochester, MI 48306**  
 (Part of) Tax Parcel No.: **10-25-300-007**

**SEE PARCEL DRAWING, ATTACHED AS EXHIBIT "A," AND  
 LEGAL DESCRIPTION, ATTACHED AS EXHIBIT "B,"  
 BOTH OF WHICH ARE INCORPORATED BY REFERENCE HEREIN**

This Highway Easement includes, but is not limited to, the consent of the Grantor to the removal of any trees, shrubs, and/or vegetation, to grading, to the occupancy of the Property by public utilities, and to other matters which, in the sole discretion of the Board, may be necessary in connection with all public highway purposes and the construction, operation, maintenance, repair, and/or replacement of roadways, utilities, and other infrastructure improvements in, over, under, upon, and through the Property. Grantor waives further notice of such actions.

This Highway Easement runs with the land and shall bind the Grantor and the Grantor's heirs, representatives, successors, and assigns. This Highway Easement contains the entire understanding of the Grantor and the Board, and there are no other verbal promises between the Grantor and the Board except as shown herein.

**WHEREFORE**, upon approval by the Board, the undersigned Grantor hereby creates, confirms, and conveys the Highway Easement described herein for the sum of **\$450.00.**

**HURON-CLINTON METROPOLITAN AUTHORITY,**  
*a public body corporate organized and operating under  
the provisions of Act 147, Public Acts of Michigan 1939,  
as amended*

By: \_\_\_\_\_

\_\_\_\_\_  
Print name

Its: \_\_\_\_\_

**COUNTY OF OAKLAND )**

**STATE OF MICHIGAN ) SS**  
**)**

On this \_\_\_\_\_ day of \_\_\_\_\_ 2017, \_\_\_\_\_  
executed the foregoing document before me and, being duly sworn, stated that he/she is  
the \_\_\_\_\_ of **HURON-CLINTON METROPOLITAN**  
**AUTHORITY**, a public body corporate organized and operating under the provisions of  
Act 147, Public Acts of Michigan 1939, as amended, and that he/she executed the  
foregoing document on behalf of **HURON-CLINTON METROPOLITAN AUTHORITY**, a  
public body corporate organized and operating under the provisions of Act 147, Public  
Acts of Michigan 1939, as amended with its full authority and as its free act and deed.

\_\_\_\_\_  
Notary Public

My commission expires: \_\_\_\_\_

\_\_\_\_\_ County, Michigan

Acting in the County of \_\_\_\_\_



Drafted by:  
Jason C. Benedict  
31001 Lahser Road  
Beverly Hill, MI 48025

When recorded return to:

**SHANNON J. MILLER, CLERK'S OFFICE (OAK04)**  
**THE BOARD OF COUNTY ROAD COMMISSIONERS OF THE COUNTY OF OAKLAND**  
**31001 LAHSER ROAD, BEVERLY HILLS, MI 48025**

Project: **Snell Road Culvert**      Project No.: **52623**      Parcel No.: **3**

(Part of) Tax Parcel No.: **10-25-300-007**

Recording Fee\_\_\_\_\_ Revenue Stamps\_\_\_\_\_





## HURON-CLINTON METROPOLITAN AUTHORITY

**To:** Board of Commissioners  
**From:** George Phifer, Director  
**Subject:** Approval – Michigan Council for Arts & Cultural Affairs Grant Application  
**Location:** Kensington Metropark  
**Date:** June 1, 2017

### **Action Requested: Motion to Approve**

That the Board of Commissioners' approve the grant application to the Michigan Council for Arts & Cultural Affairs (MCACA) for a grant of \$15,750 towards the 2018 Michigan Philharmonics concerts at the Metroparks as recommended by Director, George Phifer and staff.

**Fiscal Impact:** this is an additional revenue source.

**Background:** Michigan Philharmonic concerts at the Metroparks has become a popular annual event. In 2017, each performance will cost the HCMA \$21,500 and associated expenses related to set-up, visitor amenities and promotions.

MCACA provides a competitive grant program that provides support for the production, presentation and creation of arts and culture programs to communities and citizens of Michigan. They are especially interested in funding quality arts and cultural programs to counties that they recognize as underserved in arts programs and resources. Livingston County is the only county under the Metroparks purview that is considered underserved.

Grants from MCACA require a one-to-one cash match, which can consist of monies received through other grants and sponsorships. They also require that the grant application receive approval from the requesting organization's governing board.

Upon approval by MCACA, the Metroparks would receive \$15,750 while agreeing to spend the same towards hosting a performance by the Michigan Philharmonic at Kensington Metropark in July 2018.

**Attachment: MCACA Grant Application**





Application ID: 440801

## Grant Applications Program

### Section 1: APPLICANT INFORMATION

(\*Required fields)

Before preparing the application, please read the guidelines and application instructions. Once you have submitted this application electronically, an Acknowledgement will be emailed to you indicating receipt of your application. If you do not receive this acknowledgement, contact the Council offices at 517-241-4011. Authorized by Executive Order 1991-21.

\*Name: Huron-Clinton Metropolitan Authority

Dept: \_\_\_\_\_

\*Address 1: 13000 High Ridge Drive

Address 2: \_\_\_\_\_

\*City: Brighton \*State: MI \*Zip: 48114-9058

\*County: Livingston \*Federal I.D. number: 38-6005602

\*DUNS: 07-423-3917 (Dun & Bradstreet Number)

Other common name: Metroparks

\*Telephone: 8102272757

Website (URL): www.metroparks.com

Office hours: 8:00 a.m. To 4:00 p.m.

\*Authorizing official or board designee  
(cannot be same as proj. dir.): George Phifer

\*Authorizing official's email: george.phifer@metroparks.com

\*Authorizing official title: Director

Board chairperson: recently vacated

Board chairperson title: \_\_\_\_\_

\*Status: Government - Regional

\*Institution: Parks and Recreation

\*Discipline: Orchestral; includes symphonic and chamber orchestra

Section 2: PROGRAM  
AREA  
(\*Required fields)

---

Please choose a program area.

\*Choose one: PS

Section 3: PROJECT  
INFORMATION  
(\*Required fields)

---

\*Category: AC

---

**CONTACT PERSON'S INFORMATION**

\*Project Director (cannot be same as auth. off.): Michelle Nichols

\*Title: Grant Writer

Address 1: HCMA - Administrative Office

Address 2: 13000 High Ridge Drive

City: Brighton State: MI Zip: 48114-9058

\*Business telephone: 810-494-6012

Alternate telephone: \_\_\_\_\_

Fax number: 810-227-8610

\*Email address: michelle.nichols@metroparks.com

---

\*Project/activity title: Michigan Philharmonics at Kensington Metropark

\*Request amount: \$15750 \*Start date: 02/04/2018 \*End date: 08/31/2018

\*Project's primary discipline: Orchestral; includes symphonic and chamber orchestra

\*Type of activity: Concert/Performance/Reading

Project Description:

This project will bring the full Michigan Philharmonics orchestra to Kensington Metropark, which straddles Livingston and Oakland counties, for a dynamic, themed outdoor concert. The concert will take place near the scenic Kent Lake shoreline and be free to the public (vehicle pass required for vehicles entering the park). Audience members will be able to interact with the musicians before and after the concert.

\*Project Primary Counties - enter all that apply:

Please format your answers in alphabetical order as County; County; etc.

Livingston; Oakland

**\*ARTS EDUCATION:** Choose one that describes the project activities for which support is requested.

None of this project involves arts education

Section 4: SUMMARY  
INFORMATION  
(\*Required fields)

---

Section 4a: Project Participation Summary

(this information should represent your projections and estimates for the entire grant period)

\*Total number of Michigan artists 55  
directly involved: \_\_\_\_\_

\*Total paid to Michigan artists: \$25000 \_\_\_\_\_

\*Total number of artists directly 55  
involved: \_\_\_\_\_

\*Total paid to artists: \$25000 \_\_\_\_\_

**Adults and Youth Engaged in "In-Person" Arts Experiences:** Enter the number of people who directly engaged with the arts, whether through attendance at arts events or participation in arts learning or other types of activities in which people were directly involved with artists or the arts. Do not count individuals primarily reached through TV, radio or cable broadcast, the Internet, or other media. Include actual audience numbers based on paid/free admissions or seats filled. Avoid inflated numbers, and do not double-count repeat attendees.

\*Adults engaged: 1700 \_\_\_\_\_

\*Children/Youth (under age 18) 300  
engaged: \_\_\_\_\_

\*Total number of new hires: 9

\*Total number of employees: 516

---

**For Capital Improvement Projects Only:**

Total number of contracted Michigan workers involved in project: \_\_\_\_\_

Amount paid to contracted Michigan workers involved in project: \$0

Total number of contracted workers involved in project: \_\_\_\_\_

Amount paid to contracted workers involved in project: \$0

---

Population Benefited by Race / Ethnicity: (select all that apply)

\_\_\_\_\_ American Indian/Alaska Native

\_\_\_\_\_ Asian

\_\_\_\_\_ Black/African American

\_\_\_\_\_ Hispanic/Latino

\_\_\_\_\_ Native Hawaiian/Other Pacific Islander

☒ White

\_\_\_\_\_ No single racial/ethnic group made up more than 25% of the population directly benefited

Population Benefited by Age: (select all that apply)

\_\_\_\_\_ Children/Youth (0-18 years)

\_\_\_\_\_ Young Adults (19-24 years)

☒ Adults (25-64 years)

\_\_\_\_\_ Older Adults (65+ years)

\_\_\_\_\_ No single age group made up more than 25% of the population directly benefited

Population Benefited by Distinct Groups: (select all that apply)

\_\_\_\_\_ Individuals with Disabilities

\_\_\_\_\_ Individuals in Institutions

\_\_\_\_\_ Individuals below the Poverty Line

\_\_\_\_\_ Individuals with Limited English Proficiency

\_\_\_\_\_ Military Veterans/Active Duty Personnel

\_\_\_\_\_ Youth at Risk

☒ No single distinct group made up more than 25% of the population directly benefited

---

**Section 4b: AMERICANS WITH DISABILITIES ACT (ADA) INFORMATION**

☒ Are your facilities and PROGRAMS accessible to persons with disabilities?

☒ Has an ADA evaluation of your organization's facilities and programs been conducted?

If yes, give date completed: 09/26/2016

\_\_\_\_\_ Are staff members informed and trained in access issues?



## Section 7: REQUIRED DOCUMENTS

(\*Required fields)

All sections of the Application form must be completed.

### ATTACHMENTS

\*Attachment 1:

NarrativeHuronClintonMetropo.pdf

Attachment 2:

BudgetHuronClintonMetropolit.pdf

Attachment 3:

HistoryHuronClintonMetropoli.pdf

Attachment 4:

BiosHuronClintonMetropolitan.pdf

Attachment 5:

DemographicsHuronClintonMetr.pdf

Attachment 6:

AssurancesHuronClintonMetrop.pdf

Attachment 7:

Sample1SponsorshipMaterial20.pdf

Attachment 8:

Attachment 9:

Attachment 10:

**PLEASE NOTE:** This report does not confirm the accuracy of the grant application, materials uploaded or that it will receive funding. The Council is not responsible for incorrectly uploaded materials or the inability to open attachments. The Michigan Council for Arts and Cultural Affairs reserves the right to retain a copy of application materials for archival purposes and its permanent record.

All application materials are public records. Keep a complete copy of your application for your file. To print a copy of this form return to the [Main Menu](#) of the eGrant System and click the "View" button for the form you just completed. If there is more than one report format available you will need to choose the appropriate link to download your report. If you have any questions, please contact the Michigan Council for Arts and Cultural Affairs at 517-241-4011. Thank you.

## PROJECT NARRATIVE

### Artistic/Cultural Merit

Through this project the Michigan Philharmonic will perform an outdoor, orchestral concert at Kensington Metropark in southeast Michigan. The program has three key goals: 1) to expand the appreciation and audience for classical music; 2) to provide an easy and inexpensive way for individuals and families to view a live classical music performance; and 3) to showcase the Metropark to visitors attending the performance. Under the direction of Nan Washburn, the Michigan Philharmonic (<http://www.michiganphil.org>) has sought to foster excellence and innovation in the performance of orchestral music and has garnered six American Society of Composers, Authors and Publishers awards over the years.

For the past five years the Metroparks have partnered with the Michigan Philharmonic to bring concerts to the parks. Concerts themes have ranged from The Beatles to *Star Wars* and have delighted audiences that gather to watch. Attendees not only experience the music, but are introduced to some classical music principles to garner a greater appreciation of the genre. They will also have the opportunity to interact with the musicians. The concerts are free to the public, however vehicles entering the park must have a vehicle permit (daily vehicle permits are \$10; an annual permit is \$35).

For many people, classical music is characterized as too highbrow, inaccessible, or unconnected to them personally. Bringing classical music to a public space introduces it to a wider audience while demonstrating the range and depth of a symphonic experience. The park venue will allow for a complete social experience, providing the audience with opportunities to meet the artists, watch the musicians set up and take down, and enjoy park amenities. They will not need to worry about what they are wearing, whether their children will sit quietly, or the necessity of traveling to a more urban locale.

### Community Impact

Due to the popularity of previous concerts, in 2017 the Michigan Philharmonic performances at the Metroparks are being expanded from two to four parks with approximately 7,000 visitors in total expected to attend. As the partnership with the Michigan Philharmonic has progressed, the burden of costs for the concerts have been almost entirely shifted to the Metroparks. The Metroparks Foundation has been working to find sponsors to alleviate the financial burden and help underwrite the cost of the concerts. To date, \$25,000 in funding has been received for the four 2017 concerts. Additional revenue options are being explored including having external food and beverage vendors present during the performance.

For the MCACA project, Kensington Metropark, one of the largest and most popular of the parks, was selected as the concert venue. Kensington Metropark is very accessible, located right off of Interstate-96, and crosses the Livingston/Oakland county line about forty miles northwest of Detroit. With over 4,500 acres Kensington offers a vast assortment of recreation opportunities in its woodlands, wetlands, lakes, and rivers. The plan is for the concert to take

place on a Saturday evening in July at Kent Lake's Maple Beach. This location features areas for picnicking, nearby trails, a playground, beautiful scenic vista, and unique natural features.

Kensington Metropark receives nearly two million visitors each year, mainly from Livingston and southern Oakland counties. Orchestral concerts at Kensington have been popular. People from all walks of life and with variable levels of classical music appreciation come for the sheer pleasure of the experience. The informal setting of blankets, lawn chairs, and coolers in this grassy "auditorium" offers a way for strangers to bond. None of the nearby cities (Brighton, Highland, Howell, Milford, Pinckney, South Lyon, Whitmore Lake, or Hamburg) have a community symphony orchestra.

Numerous organizations make special arrangements to attend the concert including senior living facilities and the Michigan Council of Hosteling International, who organize the "Paddle to the Symphony" that has become a celebration of southeast Michigan outdoor enthusiasts for Friends of Hosteling International-Michigan and SOLAR Outdoors. Open to everyone to enjoy, "Paddle to the Symphony" celebrates an outdoor activity with a cultural experience.

### Implementation/Management

#### Event Timeline:

Oct. 2017	Contact Michigan Philharmonics to secure performance date and manage event specifics.
Nov. 2017 – Apr. 2018:	Research and submit event sponsorship and grant applications.
Feb. 2018	Secure food vendors, arts programs, and others to participate.
Mar. – May 2018:	Design graphics for promotional materials and signs.
May – June 2018:	Printing of promotional materials and signs.
June 2018:	Send out email to mailing list to promote event.
May – July 2018:	Promotions on website and social media posted.
June 2018:	Banners displayed at park; press releases sent to local media.
July 2018:	Stage, vendor, arts programs, and VIP tent set up by 4:00 p.m.
July 2018:	Philharmonics concert performance (7:30 p.m. – 9:00 p.m.).

#### Event Promotions:

The Concert Series will be featured on the Metroparks website homepage (see [www.metroparks.com](http://www.metroparks.com)) and events calendar as well as through several of its social media venues. Press releases will be sent to local and regional news sources and an email will publicize the event to the Metroparks mailing list recipients. Banners will be created and posted at the park entrances several weeks prior to the event. The Michigan Philharmonic has also been promoting the event through their website and through WRCJ Classical Radio 90.0 FM. Event underwriters and sponsors are offered recognition opportunities at their preference (see attached sponsorship flyer for more information).



**Project Evaluation:**

Evaluation of the event will be based on project objectives and will compare attendance figures from past orchestral performances at Kensington with the 2018 Philharmonic performance. The event evaluation will also compare overall expenses to covered expenses through grants, sponsorships, and vendor receipts.

**Accessibility Plan:**

As a public park, Kensington Metropark is working toward complete accessibility for all of its visitors. The planned concert venue location, near Maple Beach, can be accessed by a paved pathway and handicap parking is located nearby. To accommodate the anticipated audience, portable restrooms, including ADA accessible ones, will be placed along a walkway.

**Staff Qualifications:**

Overall execution of the Philharmonics project is coordinated by Hilary Simmet, Community Relations Specialist for the Metroparks. Hilary has over nine years of experience planning and implementing a variety of largescale events. Her most recent effort is the new Kensington Art Fair where over seventy-five artisans will be participating over the Memorial Day weekend.

## Revenue and Expense Itemization Template

### Income

Revenue Earned	Cash	Totals
Ticket sales/Admissions		
Tuition		
Contracted Services		
<b>Total Earned Revenue</b>		<b>\$ 0</b>
<b>Revenue - Unearned</b>		
<b>Corporate, Foundation, Private Support</b>		
Corporate Support		
Meijer - projected	5,000	
Foundation Support		
AARP - projected	10,000	
Private Support/contributions		
		<b>\$ 15,000</b>
<b>Other unearned revenue</b>		
Memberships		
Sales		
Rental income		
Vendor Receipts- projected	750	
Applicant cash		
		<b>\$ 750</b>
<b>Total Unearned Revenue</b>		<b>\$ 15,750</b>
<b>InKind revenue</b>		
Itemized in expense column	\$ 4,275	
<b>MCACA grant received to date</b>		
MCACA grant due/request	15,750	
<b>Total Cash Revenue</b>		<b>\$ 31,500</b>
<b>Total Project Revenue</b>		<b>\$ 35,775</b>

If you have additional revenue and expenses that do not fit on this itemized template, please add a supplemental page.

Expenses	Cash	In-Kind	MCACA share	Total
<b>Employee expenses</b>				
Project Coordinator		2,115		
Graphics Design		1,650		
Promotions		510		
				\$ 0
<b>Non-employee costs</b>				
Philharmonic - musicians, stage, sound, etc.	25,000		12,500	
Generator	1,500		750	
Lights	3,000		1,500	
Port-a-johns	2,000		1,000	
				\$ 31,500
<b>Capital expenses</b>				
				\$ 0
	\$ 31,500	\$ 4,275	\$ 15,750	
<b>Total Expenses</b>				\$ 35,775

If you have additional revenue and expenses that do not fit on this itemized template, please add a supplemental page.

## PROJECT HISTORY AND GOVERNING BOARD

The Huron-Clinton Metropolitan Authority (HCMA) operates one of the nation's largest regional park systems serving residents of a five county area – Livingston, Macomb, Oakland, Washtenaw and Wayne counties – along the Huron and Clinton river systems in southeast Michigan. Home to over half of the State's population, the region served by the Metroparks includes Detroit and the greater Detroit metropolitan area as well as cities of Ann Arbor, Pontiac, and Ypsilanti. The HCMA's Metroparks provide a natural oasis from urban and suburban life and educate the public on environmental issues through its Interpretive Centers' outreach initiatives.

Since its inception the HCMA has developed a greenbelt of thirteen parks encompassing nearly 25,000 acres of land for recreation, education, and preservation purposes enhancing the quality of life for residents of the region. These parks offer four seasons of exceptional outdoor recreation, host on average about eight million visitors each year, and manage over 19,000 acres of undeveloped land throughout the park system. The HCMA seeks to protect and restore significant elements of natural diversity while balancing ecological stewardship with compatible recreational uses. This diversity is evident by the more than forty threatened and endangered species flourishing in the parks including healthy populations of the rare eastern massasauga rattlesnake, one of only two known mullein foxglove populations in Michigan, and nesting bald eagles.

The Metroparks Interpretive Centers educate the public on nature, environmental processes, and cultural history. Combined together, these Interpretive Centers connected with 1.47 million visitors in 2016 through their educational programs and events. The parks work to bring new experiences and entertainment to communities in southeast Michigan. Nearly every month throughout the year has some type of cultural or artistic event scheduled. For example, the May cultural activities include the upcoming Kensington Metropark Art Fair, Lake Erie Metropark LENS CAP photography program, and Wolcott Mill Metropark Sheep Shearing and Fiber Fair where artisans demonstrate weaving, spinning, and felting.

### **Board of Commissioners**

Timothy J. McCarthy, of Grosse Pointe, serves as one of two Governor Appointees on the Huron-Clinton Metroparks Board of Commissioners. He retired from Soave Enterprises where he served in a variety of senior operational and financial administration capacities. Mr. McCarthy currently serves as a non-executive Chairman of Soave Enterprises Transportation Group. Active in civic and community affairs, Commissioner McCarthy is a past chair of the Detroit Metro Convention and Visitors Bureau where he still serves as a member of the executive committee. He is past Vice-Chairman of the Detroit Regional Chamber and a former member of the Transportation Advisory Council of the Southeast Michigan Council of Governments. He currently serves on the Blue Cross Blue Shield of Michigan Council II, which interviews and recommends individual BCBSM policyholders for membership on the BCBSM

Board of Directors. He also serves as a member of the Board of Directors and chairs the audit committee of AF Group, Inc., a national insurance company.

Kurt L. Heise of Plymouth, recently replaced outgoing Commissioner John Hertel as the second Governor Appointee. He currently serves as Township Supervisor for the Charter Township of Plymouth. Mr. Heise has over twenty-five years of experience as a municipal, labor, and environmental attorney in the metropolitan Detroit area where he represented Wayne County on all matters impacting the Detroit Water and Sewer Department and the Rouge River Watershed before the Federal Court, EPA, and MDEQ. He recently stepped down from his position as State Representative for the 20<sup>th</sup> House District where he sponsored forty laws and served as Chair of the House Criminal Justice Committee, Vice Chair of the House Judiciary Committee, and Co-Chair of the Michigan Human Trafficking Commission. Mr. Heise serves as Trustee of the Plymouth-Canton Educational Foundation.

Representing Livingston County, Steve Williams of Pinckney, is a twelve year member of the Livingston County Board of Commissioners, was a Livingston County delegate on the Southeast Michigan Council of Governments' Executive Committee for ten years, and served on several SEMCOG committees. He also served as a Michigan Counties Workers Compensation Fund trustee for four years and was active with the Michigan Association of Counties. Commissioner Williams' national public service began at age twenty-two when he was commissioned into the United States Army as a Second Lieutenant. Williams rose to the rank of Lieutenant Colonel before retiring after twenty-eight years of continuous service as a communications officer, political/military intelligence analyst, and counter-terrorism analyst. Williams commanded five units, was deployed overseas several times, and earned the Army Meritorious Service Medal and two Defense Meritorious Service Medals among other awards. Commissioner Williams also has over twenty years manufacturing industry experience and has worked in dozens of General Motors, Ford, Chrysler and supplier facilities in the United States and overseas.

John Paul Rea of Washington Township, is the new Board member appointed to represent Macomb County. Mr. Rea is the Director of the Planning and Economic Development Department of Macomb County. He is on the Board of Directors for the Suburban Mobility Authority for Regional Transportation as one of two Macomb County representatives. Mr. Rea has also been an active part of the Southeast Michigan Council of Governments sitting on various committees.

Representing Oakland County, Jaye Quadrozzi of Beverly Hills, is an attorney with more than fifteen years' experience. She's a commercial litigator who represents companies in complex, commercial matters in both federal and state courts throughout the country. She is a member of the Michigan, Illinois, and California state bars and has been admitted to numerous federal courts including the Eastern District of Michigan, the Northern District of Illinois, the Northern and Southern Districts of California and the Southern District of New York. Martindale Hubbell, an attorney rating agency, has awarded Ms. Quadrozzi the top ranking of AV Preeminent, demonstrating that her peers rank her at the highest level of professional excellence.



Representing Washtenaw County, Robert W. Marans of Ann Arbor, is a research professor at the Institute for Social Research and an emeritus professor of architecture and urban planning both at the University of Michigan. Dr. Marans is a licensed architect who conducts research on buildings, neighborhoods, housing, parks, and the contributions of each to the quality of life for different population groups. He has written extensively on these topics and has lectured at universities and to civic groups all over the world. He serves on the editorial boards of several journals and has been a consultant to the United Nations, the World Health Organization, the Tennessee Valley Authority, and the National Science Foundation. Dr. Marans has been a member of several other committees including the National Academy of Science Committees and a committee addressing the Assessment of Demand for Outdoor Recreation. He's a charter member and president of the Washtenaw County Parks and Recreation Commission and currently serves on the board of the Detroit Riverfront Conservancy.

Representing Wayne County, Bernard Parker of Detroit, served as a Wayne County Commissioner for twenty-two years. In that role, he successfully generated funding that resulted in the creation of Chandler Water Park and a state of the art juvenile detention facility. Mr. Parker was appointed by Congress to serve on the Federal Reserve Board Advisory Committee for three years, making recommendations on policies and investments that affected Detroit. He chaired the Ways and Means Committee, providing funding for youth crime prevention programming, neighborhood stabilization, and the renovation of over one hundred parks in Detroit. As the president of Detroit Fair Banking Alliance, Mr. Parker negotiated with banks to initiate a \$1.4 billion consumer lending program. As a member of the Airport Authority, he worked to increase contracts for small businesses at Detroit Metropolitan Airport by 30%. In 1971, he co-founded *Operation Get Down*, a residential substance-abuse treatment, mental health, and homeless and transitional housing facility, and served as the Executive Director for over thirty years. He is owner of BP4 consulting service for non-profit organizations, founder and CEO of Magnum Educational Management Company (for Timbuktu Academy of Science and Technology, an African-centered, public charter school in Detroit) and co-founder of Midwest Foods, a vegetable canning company that provides canned goods to communities and food banks.

**STAFF, PROJECT AND ARTIST BIO****Staff Bio - Project Coordinator**

Hilary Simmet is the Community Relations Specialist for the Huron-Clinton Metropolitan Authority (HCMA). In this position she organizes community outreach events including logistics, promotions, set-up/teardown, securing event workers, and building and maintaining relationships with event organizers. She is also responsible for creating and managing content for all HCMA social media channels. In her capacity as Community Relations Specialist, Ms. Simmet has coordinated previous Philharmonics at the Metroparks, Heritage Holidays at Wolcott Mill Metroparks, and many others including the new Kensington Art Fair opening over Memorial Day weekend. In her previous position with the March of Dimes Foundation, Ms. Simmet was responsible for the development and execution of two major fundraising events each year, managing all operational aspects and keeping event expenses under fifteen percent of project revenue.

**Artist Bio – Music Director and Conductor**

Nan Washburn is in her eighteenth season as the Music Director and Conductor of the Michigan Philharmonic. During her musical career she has conducted throughout the United States and has been featured in both national and regional media. She was co-founder, Artistic Director, and Associate Conductor of the Women's Philharmonic of San Francisco where she became a recognized authority and advocate for orchestral works of women composers. She has also brought a multicultural element into the Philharmonic's programs. Ms. Washburn has received numerous awards and honors including the recent American Prize Ernst Bacon Memorial Award for Performance of American Music, professional division, 2016, winner of The American Prize in Orchestral Conducting, professional division 2013, and nineteen American Society of Composers, Authors and Publishers (ASCAP) awards for Adventurous Programming from the League of American Orchestras.

**Orchestra Bio – Michigan Philharmonic**

In its 71<sup>st</sup> Season the Michigan Philharmonic, previously known as the Plymouth Symphony and Orchestra Canton provides cultural and educational programs in southeast Michigan (see [www.michiganphil.org](http://www.michiganphil.org)). It also sponsors the Michigan Philharmonic Youth Orchestra to engage young players to develop their talent. Under the leadership of Nan Washburn, the Michigan Philharmonic has received national recognition including six ASCAP Awards, several grants from the Knight Foundation, and 2nd Place honors from The American Prize, professional orchestra division.

## DEMOGRAPHICS

Over 8 million visitors across southeast Michigan and beyond are served annually by the Huron-Clinton Metroparks. Since the Metroparks are open to everyone, demographic data is generally not collected unless required for a particular program. Overall demographics would follow regional census data for southeast Michigan as outlined below.

Ethnicity: White 68%, Black 22%, Asian 4%, Hispanic 4%, other 2%.

Age: under 18 – 23%, ages 18-64 – 62%, 65 and older – 15%.

Households in poverty: 13%.

The thirteen individual Metroparks are located in Livingston (1), Macomb (2), Oakland (1), Washtenaw (3), and Wayne (4) counties with two additional Metroparks straddling two counties (Livingston/Oakland and Oakland/Macomb). The vast majority of visitors to the Metroparks come from across southeast Michigan.

For programs targeting specific underserved groups, the Metroparks staff does an excellent job reaching out to various organizations that serve low-income communities. For example, for a current PNC grant targeting underserved preschoolers, Metroparks staff reach out to schools based on income levels where at least half of the children at the school are eligible for the National School Lunch Program. Similarly, the Summer Fun at the Metroparks program targets underserved youth and seniors, and Metroparks staff reach out to non-profit organizations whose mission it is to provide services for low-income groups, particularly in urban areas.

The Huron-Clinton Metropolitan Authority is in the midst of preparing Master Plans for each Metropark. Five Master Plans have been completed to date, including one for Kensington Metropark. At each park, two public meetings, an online survey, and hardcopy questionnaires are utilized to gain public input which is then considered as a critical component when developing both short and long term plan recommendations.



## Michigan Council For Arts and Cultural Affairs ASSURANCES

**A:** The applicant has an established policy of equal opportunity without regard to race, color, religion, national origin, age, sex or disability. The applicant agrees to take steps necessary to correct any under-representation reported on the status report and achieve a reasonably representative work force at all levels of employment. The applicant has an established policy to provide equal opportunity on all programs, activities and services.

The applicant:

1. Agrees in all recruiting materials and advertisements to state that all job applicants will receive equal consideration for employment;
2. Agrees in all promotional materials and advertisements to state that all programs, activities and services will be provided equally; and
3. Agrees to post in conspicuous places, notices setting forth the law on equal opportunity in employment and public accommodations.

**B:** If the grant is awarded, the applicant warrants and represents to the Michigan Council for Arts and Cultural Affairs, that the support funds will be administered by the applicant.

**C:** Any funds received under this grant shall not be used to supplant funds formally budgeted for same and that funds received will be used solely for the contracted activities.

**D:** The applicant has read and will conform to the Guidelines.

**E:** The filing of this application by the undersigned, officially authorized to represent the applicant organization has been duly approved by the governing board of the applicant organization.

- o This application was approved by the governing board on \_\_\_\_\_
- o This application is scheduled to be approved by the governing board on June 8, 2017

If the application has not yet been approved by your governing board, notify the Council of the action taken as soon as possible.

If the notification of action by your governing board is not received prior to panel review, the application may not be recommended for funding.

Organization name: Huron-Clinton Metropolitan Authority

Grant Program: Project Support Grant

**Authorized Official: (Cannot be the Project Director)**

Name (typed) George Phiifer Date 5/24/17

Signature:  5-25-17



## HURON-CLINTON METROPOLITAN AUTHORITY

To: Board of Commissioners  
From: Mike Brahm-Henkel, Manager of Engineering  
Project No: 710-17-177  
Subject: Report – Correction to Willow Culvert Repair  
Date: June 1, 2017

### **Action Requested: Motion to Receive and File**

That the Board of Commissioners' receive and file the report on the Willow Metropark Culvert Repairs as recommended by Manager of Engineering and staff.

**Fiscal Impact:** Update to project cost in the amount of \$10,106.

**Background:** At the May 11, 2017 Board meeting, staff received approval to repair the Willow golf course culvert in the amount of \$60,992.

As part of the bid, there was a deductive alternate for the type of culvert pipe to use on the project in the amount of 10,106. The deductive alternate was mistakenly subtracted twice from the cost. The cost of the project should have been \$71,098. This did not change the bidding order; the second bid total was \$73,329.00.

**Attachment: Bid Tab with Correction**



HURON-CLINTON METROPOLITAN AUTHORITY  
13000 HIGH RIDGE DRIVE  
BRIGHTON, MICHIGAN 48114

TABULATION OF BIDS  
BID OPENING @ 2:00 P.M., WEDNESDAY APRIL, 26 2017  
Emergency Culvert Replacement  
Project Number 710-17-177  
Willow Metropark

	ITEM	QUANTITY	UNITS	1		2					AMOUNT
				UNIT PRICE	AMOUNT	UNIT PRICE	AMOUNT				
1	Culvert, Rem	1	LS	\$15,500.00	\$15,500.00	\$27,600.00	\$27,600.00				
2	Culv, Reinf Conc Ellip, HE CIV, 53 inch by 83 inch	56	LF	\$774.00	\$43,344.00	\$701.50	\$39,284.00				
3	Class IIIA Embankment	210	CYD	\$45.00	\$9,450.00	\$40.25	\$8,452.50				
4	Aggregate 21AA (Limestone)	6	TON	\$135.00	\$810.00	\$172.50	\$1,035.00				
5	Rip Rap w/ Liner	110	SYD	\$110.00	\$12,100.00	\$63.25	\$6,957.50				
SUB TOTAL					\$81,204.00		\$83,329.00				

	DEDUCT ITEM	QUANTITY	UNITS				AMOUNT
				UNIT PRICE	AMOUNT		
	DP Schweihofer - Galv cspa 10 ga 56 lf 59" x 81"	1	LS	-\$10,950.00	-\$10,950.00	n/a	#VALUE!
	DP Schweihofer - Galv cspa 10 ga 56 lf 63" x 87"	1	LS	-\$10,106.00	-\$10,106.00	n/a	#VALUE!
	Anglin - (56) LF 81" x 59" or 67" x 63" 10 ga Galvanized cspa	1	LS	n/a	#VALUE!	-\$10,000.00	-\$10,000.00
SUB TOTAL					\$71,098.00		\$73,329.00







## HURON-CLINTON METROPOLITAN AUTHORITY

To: Board of Commissioners  
From: George Phifer, Director  
Subject: Approval – Contractual Services  
Date: June 1, 2017

### **Action Requested: Motion to Approve**

That the Board of Commissioners' (1) approve the employment agreement with Sherrie Borchardt to serve as consultants listed in the terms and conditions of the agreement and; (2) approve the transfer from the Fund Balance to cover the salary for the contract as recommended by Director George Phifer.

**Fiscal Impact:** Funds will be needed to cover the cost of contractual services for position in an amount up to \$30,000.

**Background:** After 37 years of service, Sherrie Borchardt has made the decision to retire. In order to ensure that certain projects and park operations continue to flow as planned, staff recommends that HCMA seek out contractual services with this employee. Ms. Borchardt will assist the new employee with transitioning into their new role, along with providing support for the completion of existing projects.

Ms. Borchardt will be compensated at \$28 per hour, with a contract maximum expenditure of \$30,000.

General Counsel Steve Mann of Miller Canfield is preparing a contractual services agreement and will provide an agreement for execution once approved by the Board at the June 8, 2017 meeting.





# HURON-CLINTON METROPOLITAN AUTHORITY

To: Board of Commissioners  
 From: Michelle Cole, Chief Financial Officer  
 Subject: Report – 2016 Audited Financial Statements  
 Date: June 1, 2017

## Action Requested: Motion to Receive and File

That the Board of Commissioners' receive and file the 2016 Audited Financial Statements Report as recommended by Chief Financial Officer Cole and staff.

**Summary:** The Authority's auditing firm, Abraham and Gaffney, has completed their audit of the 2016 accounting records, pension plan, retiree health care trust and related financial statements. Together with Abraham and Gaffney's Audited Financial Statements, staff compiled the Authority's 2016 Comprehensive Annual Financial Report, which is enclosed for review. Mr. Alan Panter will review the 2016 Audited Financial Statements with the Board at the June 8, 2017 meeting.

**Background:** Staff is pleased to report that Abraham and Gaffney has issued an unqualified opinion, meaning the Audited Financial Statements present fairly the financial position of the governmental activities and each major fund of the Authority as of Dec. 31, 2016 in conformity with generally accepted accounting principles. Abraham and Gaffney conducted their audit following generally accepted auditing standards in order for them to obtain reasonable assurance that the Authority's financial statements are free of any material misstatements.

As reflected on the Government Wide Statement of Net Position, the Authority's total net position at \$223.8 million an increase of \$1.1 million from the 2015 net position of \$222.7 million. The primary reason for this increase is a rise in property tax revenue of \$800,000. The total General Fund Balance is reported at \$40.9 million, an increase of \$1.4 million. The increase to Fund Balance is a result of timing for anticipated use of Fund Balance for Capital and Major Maintenance projects and increase in revenue over expenditures.

The 2016 Committed Fund Balance is at \$10,012,000 (\$9,874,000 in 2015). The 2016 Assigned Fund Balance is at \$15,909,000 (\$10,075,000 in 2015). The 2016 Unassigned Fund Balance stands at \$13,630,000 (\$18,349,000 in 2015). This level of Unassigned Fund Balance represents 28 percent of General Fund expenditures. The Statement of Revenues and Expenditures shows 2016 General Fund expenditures at \$49.2 million against revenues of \$50.2 million producing a surplus of \$1.0 million.

The Authority intends to submit this 2016 Comprehensive Annual Financial Report (CAFR) to the Government Finance Officers Association Certificate of Excellence in Financial Reporting program. The Authority has received a Certificate of Achievement for the last 15 years and staff believes this 2016 report will continue to earn this distinction. This achievement would not be possible without the dedicated work efforts of the entire Finance Department.

The 2016 Audited Financial Statements will be sent separately prior to the June 8, 2017 Board meeting.



**HURON-CLINTON METROPOLITAN AUTHORITY**

To: Board of Commissioners  
From: Nina Kelly, Manager of Planning  
Subject: Approval – Hudson Mills Master Plan  
Date: June 1, 2017

**Action Requested: Motion to Approve**

That the Board of Commissioners; (1) approve the Hudson Mills Master Plan; (2) approve the closure of the Hudson Mills golf course after the 2017 season; and (3) authorize staff to develop a repurposing plan for the Hudson Mills golf course for future approval by the Board of Commissioners as recommended by Manager of Planning Nina Kelly and staff.

**Fiscal Impact:** Projects identified in the Master Plan will affect the HCMA budget over the 10-year planning horizon, but there is no immediate fiscal impact.

**Background:** The master planning process for Hudson Mills included several opportunities for public input. Two public meetings were held on Saturday mornings in January and April at the Activity Center and were attended by nearly 40 people. Banners were posted at the park entrance a week in advance of each public meeting. The online and hard copy questionnaire was available from January through April and yielded over 600 responses (the same number received during the master planning process at Stony Creek in 2016). Social media posts encouraging people to attend the meetings and to complete the questionnaire were made on the Hudson Mills Facebook page and Metroparks Twitter account throughout the process.

At the May 11, 2017 meeting, the Planning Department presented the draft Hudson Mills Master Plan to the Board of Commissioners for review and comment. During that meeting, the Board of Commissioners requested that a plan be developed for the future use of the golf course site and building prior to its actual closure.

The plan draft was posted to [www.metroparks.com/about-us/planning-department/](http://www.metroparks.com/about-us/planning-department/) through May 30, 2017 for public review and comment. Staff received three objections to the proposed closure of the golf course via email.

Planning Department staff compiled comments and made necessary revisions in order to complete the final version of the master plan document presented herein for approval.





# HURON-CLINTON METROPOLITAN AUTHORITY

To: Board of Commissioners  
 From: Mike Brahm-Henkel, Manager of Engineering  
 Project No: 702-17-297  
 Project Title: Bids – Exterior Insulated Finish System Repairs/Caulking/Painting  
 Project Type: Major Maintenance  
 Location: Lake St. Clair Metropark  
 Date: June 1, 2017

Bids Received: May 18, 2017

## Action Requested: Motion to Approve

That the Board of Commissioners award Contract No. 702-17-297 to the low responsive, responsible bidder, General Painting Company, LLC in the amount of \$65,800 as recommended by Manager of Engineering Mike Brahm-Henkel and Staff.

**Fiscal Impact:** Funding was budgeted in the separate Major Maintenance accounts for the parks under general caulking and painting. Funding is available from the budgeted items Caulk/Painting Shelters, Buildings, Tollbooths – Annual for Lake St. Clair, Kensington and Lake Erie at \$30,000 each for a total of \$90,000.

**Scope of Work:** Project includes exterior work on the Exterior Finish System (EIFS). The work will include the patching of damage exterior surfaces, hole repairs, crack repairs, caulking and painting of the EIFS surfaces. The stucco surface in need of repair, caulking and painting

**Background:** The existing Activity Building, Bathhouse, and Office/Concession building have an EIFS exterior surface. EIFS is a cladding system for exterior walls, which provides insulation, water resistance and a finished surface. The system is composed of a layer of insulation, fiber mesh. The existing surface is in need of repair from holes created by birds, cracks due to weathering and other damaged areas. The work will also include the caulking of interfaces to prevent moisture intrusion.

<u>Contractor</u>	<u>City</u>	<u>Amount</u>
General Painting Company LLC	Rochester Hills	\$ 65,800.00
RAM Construction Service of Michigan LLC	Livonia	\$243,450.00

### Budget Amount for Contract Services and Administration

Lake St. Clair Caulking and Painting	\$ 30,000.00
Kensington Caulking and Painting	\$ 30,000.00
Lake Erie Caulking and Painting	<u>\$ 5,800.00</u>
Total	\$ 65,800.00

### Work Order Amount

Contract Amount- General Painting Company LLC	\$65,800.00
Contract Administration	\$ 2,000.00
Total Proposed Work Order Amount (Rounded)	\$70,800.00

*This project was reported and publicly advertised in the following construction reporting outlets: MITN, Construction Association of Michigan, Reed Construction Data, Construction News Corporation, Construction News Service, HCMA Website, Builders Exchange of Michigan, McGraw Hill Dodge, Builders Exchange of Lansing and Central Michigan.*

Note the following reviewed plans but did not submit a bid;

1855ustrash LLC	Aristeo Construction	Building Technology	Creative Surfaces,
3.L.K. CONSTRUCTION	Company	Associates	Inc.
LLC.	Arm Property	Butcher & Butcher	Cross Renovation
400 Monroe	Maintenance Inc	Construction Co., Inc.	Crystal Bright Janitorial
Associates	Ashor Associates	C and J General	Services, Inc.
A. C. Dellovade	Asphalt Specialists,	Contractors, Inc.	CTI and Associates, Inc.
A.F.Bellisario., Inc.	Inc.	C.A. Hull Co., Inc.	CTI Property
A.W.E. Inc.	ASTI Environmental	C.S. FARMER	Services Inc.
A.Z. Shmina, Inc.	Atlas Oil Company	CONSTRUCTION	Cunningham-Limp
A1 Victory Inc.	Atsalis Brothers	INC.	Development
ABE Associates, Inc.	Painting Company	CAASTI Contracting	Company
Above The Rest	Axiom Construction	ServiceInc.	Cutting Edge
(ATR) General	Services Group, LLC	capital one coatings	Contracting Inc.
Construction, Inc.	B & J Parking Lot	llc	D& R
Acme Enterprises,	Maintenance, Inc.	CCS International Inc	EARTHMOVING,
Inc.	B.M.A services llc	CD Barnes	LLC
Acquest Realty	BANKSTON	Construction	D&R MAINTENANCE
Advisors, Inc.	CONSTRUCTION,	Cedroni Associates	MANAGEMENT INC
Adj Excavating, Inc	INC.	Inc.	D'Angelo Brothers
Advanced Building	Baruzzini	Center Line Electric,	Inc.
Group, LLC	Construction Co.	Inc.	D.M. Burr Facilities
Advanced Integrated	Bayview Electric	CertaPro Painters of	Management, Inc.
Solutions, LLC	Company, LLC	Novi	D.V.M. Utilities, Inc.
Advantage	Beckett & Raeder	CFJ Investments,	Daco Construction, Inc.
Mechanical-	BELFOR USA	LLC	Daily Facility Services
Refrigeration Inc	Berkshire	Choice Property	Damark Marine
Agar Services, LLC	Development	Services	Danboise Mechanical Inc.
Ajax Materials	Bernco, Inc.	CITI Building	Dave Cole
Corporation	Best Practices	Services Inc	Decorators
Alden Development	Consulting Services	City Contracting	Dave's Contracting, Inc.
Group	Big Sky Service	Services	Davenport Brothers
ALDEWIN ROSE	Company	Clark Construction	Construction Co
CONSTRUCTION	Birkenstock	Company	DBC Company Inc. &
Alexander Transport,	Construction LLC.	Classic Painting Co., Inc.	Barrier Free Plus Inc
Inc.	Black Star	CMA Design	Dean Marine &
All Court	Companies	Services	Excavating Inc.
All Prop LLC	Blaze Contracting	CMON	Degenhardt & Sons,
All Season Builders,	Inc.	CONSTRUCTION	Inc.
Inc.	Blue Spader	Colasanti	DeMaria Building
Allied Building	Contractors	Construction	Company
Service Company of	Blue Water	Services, Inc.	Demonica Kemper
Detroit, Inc.	Environmental, Inc	Collards Concrete	Architects
Allpoint painting and	BMJ Engineers and	Commercial	Denali fire protection
cleaning LLC.	Surveyors, Inc.	Contracting	inc
Alpha Electric &	BNE Services LLC	Corporation	DES Electric LLC
Engineering, LLC	Boji Group, LLC	community 1st	Desai/Nasr
ALT VACANCY	Brasco International,	development	Consulting
SOLUTIONS INC	Inc.	Concraft Inc	Engineers, Inc.
Amalio Corporation	Braun Construction	Constructeam	Detroit Contracting,
Angels General	Group	Construction	Inc.
Construction, Inc.	Breakthrough	Solutions, Inc.	Detroit Power
ANTLER	Developers, Inc.	Continuum Services	Systems
CONSTRUCTION	Brenca Contractors,	Core Land Surveying	Dimension Four
Aquatic Source	Inc.	CORE Property	Painting, Inc.
ARCADIS of	Brock & Associates	Restoration	Distinguished
Michigan LLC	Inc.	Cornerstone	Development Inc
ArcLite Services	Brooks Striping, Inc.	Industrial, Inc.	Diversified
Arisco Contracting	BRT Builders LLC	Crawford	Excavating & Site
Group, Inc.		Contracting, Inc.	Utilities llc



Dixon Landscaping INC	Facilinet Services	Granger Construction Company	JMC Electrical Contractor LLC
DMC Consultants, Inc.	Farbman Group	Great Lakes Elevator	JMK Consultants, Inc
Doring, Incorporated	Farrow Group, Inc.	Great Lakes Roofing, Inc.	John E. Green Company
Dorsey Williams Construction Co.	FEDCON LLC	Great Lakes Welding LLC.	Johnson & Wood, LLC
Doshi Associates, Inc	Finishing Trades Consulting	green builders plus	Johnson Controls
Douglas N. Higgins, Inc.	FIRST CLASS BUILDING	Greenscape	Jones Lang LaSalle Americas, Inc.
DRC Contract Cleaning	MAINTENANCE, INC.	GreenTech	JR SERVICES GROUP, LLC
DRV Contractors	Fleis & VandenBrink Engineering, Inc.	Engineering, Inc.	Kellett builders inc
Dumas Construction Services	Fonson Company, Inc.	Grunwell-Cashero Company	Keo and Associates, Inc.
E&L Construction Group, Inc.	FORD MOTOR LAND	GS Group LLC	Kevin McNamara, LLC
E. Gilbert & Sons, Inc.	DEVELOPMENT	GZA	Keys Construction Inc
E.C. Korneffel Company	Foundation Steel	GeoEnvironmental, Inc.	Keystone Group Contracting LLC
E.S. Wagner Co.	Frank Rewold and Son Inc.	H&h metals	Knowles Painting Co., Inc.
E.T. MacKenzie Company	Freedom Landscape and Supply LLC	Harmon & Sons	L.A. Construction
Eagle Specialties, LLC	G&M Painting Enterprises, Inc.	Havelka Construction	L.G.K Building Inc.
Early Construction	G. FISHER	Havener Tech	LaBelle Development
Eason Painting Inc	CONSTRUCTION COMPANY	Heaney General Contracting, Inc.	LaDuke Roofing Corporation
East West Painting, Inc.	G. STEPHENS INC.	Heritage Contracting, LLC	Lake Michigan Excavating, LLC
Eastwood Custom Homes	GEI Consultants of Michigan, LLC	Hittle Construction Co.	Lakeshore Construction and Renovation
ECI Environmental Compliance	GEIERSBACH CONSTRUCTION, INC.	hollywood plumbing & heating, inc.	LAKIN ELECTRIC LLC
Edwards Glass Company	Gen Power Products, Inc.	Honeywell	Land-HO Construction
Elgin Builders Inc.	GENERAL	International, Inc.	Company, Inc.
Ellsworth Industries	PAINTING CO LLC	Howell Construction Services	Landwise, Inc.
Elmer's Crane and Dozer, Inc.	George W. Auch Company	Hughes Builders	LaSalle Inc
Emergency Restoration	Gerace Construction	HYMMCO LLC	Laux Construction, LLC
Eng., Inc	Gerber Construction Company, Inc.	Independent Home Services LLC	LD Docsa Associates Inc.
engle construction	Giannetti Building Development	Insurance Services Construction Corporation	LESLIE ELECTRIC COMPANY
Entech Staffing	Giant Janitorial Service, Inc	Integrated Design Solutions	LGC Global (Lakeshore Global Corporation)
Environmental Excavating & Contracting, Inc.	Gladiator Construction & Demolition LLC	ITALIA CONSTRUCTION INC	Luckenbach/Ziegelm an Architects pllc
Envision Builders Inc.	Global Building Maintenance	J. S. Vig Construction Company	luigi ferdinandi & amp; son cement co. inc.
Era Valdivia Contractors	global green service group	J.R. Heineman & Sons, Inc.	lulaj precise painting
Erhardt Construction	GM Painting Inc	Jacobs Gate & Associates Llc	Lyon Maintenance Services, Co. Inc
Es Construction Group Inc	Gold Star Commercial	James W. Turner Construction, LTD	M.L. Schoenherr Construction, Inc.
Esko Roofing and Sheet Metal Inc.	Goldleaf Building, llc	Jarvis Property Restoration	MacAllister
Evangelista Corporation	Grand Horizon Contracting	Jay K Masonry	Machinery Co., Inc.
Evergreen Civil	Grand River Construction, Inc.	JCW Construction LLC	dba Michigan CAT &
Exquise Fire / Safety		Jenkins Construction, Inc.	
F+V Construction		JFR Architects, PC	
F.J. LaFontaine		Jim McMahon Painting Company	

MAK Construction Inc.	Mpm Painting LLC	Phoenix Contractors, Inc.	Rolling Acres Landscaping and Lawn Service, LLC
Mando Construction Inc.	MPM USA	Phoenix Contractors, Inc.	Roncelli, Inc.
Marble Mechanical Service	MV CONTRACTING INC.	Pinnacle Contracting, Inc.	Roncelli, Inc.
Mark 1 Restoration Services	MYERS EXCAVATING, INC.	Pizzo Development Group, LLC.	Roscoe's Enterprises Inc.
marshall pools	NACC, Inc.	Plumbers Local 98	Ross Construction Inc.
MAS Electrical Services, Inc.	National Airport Concessions, LLC	Poe Restoration & Waterproofing	RVP Construction
Master Craft Floors	National Maintenance Services LLC	Polymath Development Company	Ryan Incorporated Central
Mattioli Cement Company	National Restoration, Inc.	Pranam GlobalTech, Inc.	Sachse Construction & Development Company, LLC
Mavcon	Nationwide Construction Group	Precision Contracting	Sanctum Contracting
Maximized Security Systems, LLC	Nederveld, Inc.	Precision Painting Inc	SANDBORN Construction, Inc
McCarthy & Smith, Inc.	Newton Crane Roofing, Inc.	Premier Group Associates Ic	Sarnacki & Associates Architects, Inc.
Meridian Contracting Group	Nick Guzik	Premiere Developing Inc.	Schaible Builders Inc.
Meridian Restoration	Nick Karoutsos	Pro Energy Logistics LLC	schlicht excavating
Merlo Construction Co. Inc.	Painting Co.	Professional Building Maintenance	Schreiber Corporation
Metro Electric	NORA CONTRACTING LLC	Professional Concrete Services, LLC	SDA Architects, Inc.
Metro Environmental, Inc.	Norkan Inc.	Professional Engineering Associates, Inc.	Seaway Painting, LLC
Metro Trades LLC	North Coast Strategies	Property Monkey Qualified Construction Corp	SELAH LLC
MFS, Inc.	North Star Refrigeration, Heating and Cooling	R & R Asphalt, inc.	SER Metro-Detroit,
michael andrews concrete llc	Nowak & Fraus Engineers	R. W. Mead & Sons, Inc.	Jobs for Progress, Inc.
Michigan Condominium Development Company	NRC, LLC National Renovation Contractors	R. W. Mercer Co.	Serenus Johnson Construction
Mid American Gunite	NTH Consultants, Ltd.	RACM, LLC dba	SHERMAN
Midwest Builders LLC	O'Brien Construction Company, Inc.	Servpro of Saginaw	NURSERY FARMS
Midwest Building Maintenance, LLC	OE 324 LMEC	RAM Construction Services	Sherwin Williams Co
MidWest Construction Inc.	One Stop Property Maintenance llc	Raymond Excavating Company	Shine Tech Inc
MIDWEST PAVEMENT CONTRACTING, INC	ONE SUPPLY GROUP	Rayne Construction, LLC	Siemens Industry, Inc.
Midwestern Consulting, LLC	Optimum Contracting Solutions Inc	Rekon Corporation	Sigma Associates, Inc.
MIG EAST LLC	Orion Waterproofing, Inc.	REMCO STORAGE SYSTEMS,	Signature Associates signature contracting grp llc
Mihm Enterprises, Inc.	Our Home Renovations	Rickman Enterprise Group, LLC	Simply Construction and Excavating
Mike & Son Asphalt Inc.	Outdoor Expressions Landscaping LLC	Robbin Harsh Excavating, Inc.	SJR Pavement Repair, Inc.
Miller Building Co. LLC	Outdoor Specialty, llc	Rocan Inc	Smith's Waterproofing
Miller Concrete and Construction	Outdoor Techniques	Rodney Woods Builder	Soil and Materials Engineers Inc
Buyer's Copy	Pacitto & Forest Const Co	Rohde Bros. Excavating, Inc.	SOLE' CONSTRUCTION, INC.
MJM Property Restoration LLC.	Partners in architecture, PLC	Rolar Property Services Inc.	Solutions
Modern Xterior Improvement	Patterson Real Estate & Construction Group		Maintenance And Management Inc
Molon Excavating, Inc.	perfection plus const.&paint		Sorensen Gross Company

Spalding DeDecker  
Associates, Inc.  
Spence Brothers  
Stante Excavating  
Company, Inc.  
State Wide Janitorial  
Service, Inc.  
STE Construction  
Services, Inc.  
Stoneco of Michigan  
Streamline Electric  
Sugar Construction,  
Inc.  
Summit Properties &  
Development Co  
Superior Contracting  
Group L,L,C,  
Swiatko Enterprises,  
Inc.  
T & M ASPHALT  
PAVING, INC.  
t&b painting  
construction  
Team Cares  
Inc/Marra Building Inc  
Technical Service  
Professionals, L.L.C.  
THE BERESH  
GROUP, INC.

The Christman  
Company  
The Concord Group  
The Dailey Company  
The Healthy School  
Food Collaborat  
The King Co., Inc.  
The Petersen  
Companies Inc.  
The Tancor  
Corporation  
The Whiting-Turner  
Contracting Company  
Thermico, Inc.  
Timber Systems  
TLS Construction  
LLC  
Tollis Development  
Tooles Contracting  
Group LLC  
Tri-City  
Groundbreakers, Inc  
Tridonn Construction  
Company  
TTL Associates  
Turner Construction  
Company  
United Facility  
Supplies

Universal Property  
Services  
Unlimited Recycling,  
Inc.  
US Metro Group, Inc  
Usztan, LLC  
V Pizzo Electric LLC  
V.I.L. Construction,  
Inc.  
Van Horn Concrete  
Vanguard Building  
Group, LLC  
Vazquez Commercial  
Contracting, LLC  
VENICE  
CONTRACTING LLC  
VENICE  
CONTRACTING LLC  
Vetcon, Inc.  
Veteran Surface  
Solutions, LLC  
VHM Enterprise, INC  
W-3 Construction Co.  
W.J. O'Neil  
Walbridge  
Walsh Construction  
Warren Contractors &  
Development Inc.

Washtenaw  
Contractors  
Association  
WCI Contractors, Inc.  
We Preserve  
Michigan LLC  
Weatherseal Home  
Improvements co, inc.  
WeatherTech  
Consulting Group,  
Inc.  
Wesco Distribution  
West Construction  
Services  
White Pine Building  
and Development  
LLC  
William A. Kibbe &  
Associates, Inc.  
WILTSE ELECTRIC  
SERVICE, INC.  
Wm. Bronner & Son  
Contr., Inc  
Wm. Molnar Roofing  
Inc.  
Worldview Property  
Restoration  
Yoku Remodeling  
Zuniga Cement  
Construction Inc.













**HURON-CLINTON METROPOLITAN AUTHORITY**

To: Board of Commissioners  
From: Ryan Colliton, Manager of Natural Resources and Environmental Compliance  
Subject: Report – Black Creek Marsh Dredging Project  
Location: Lake St. Clair Metropark, Macomb County  
Date: June 1, 2017

**Action Requested: Motion to Receive and File**

That the Board of Commissioners' receive and file the Black Creek Marsh Dredging Report recommended by Manager of Natural Resources and Environmental Compliance Ryan Colliton and staff

**Fiscal Impact:** This project is funded through an EPA GLRI grant; budgeted funding in the amount of \$676,363 is in the Lake St. Clair Capital Improvement account (10-5-102-990-82-9420) and all expenditures will be reimbursed.

**Background:** This project is phase II of a larger restoration project and was approved by the Board at its April 11, 2015 meeting. Phase I included the restoration of threatened and endangered species (snake hibernacula), the control of invasive Phragmites, the replacement of nature trails and the construction of a dipping platform for nature programs. Phase I was approved by the board at the May 2011 board meeting and work began in April 2011. The final portion of Phase I, a dipping platform for nature programs, was completed in December 2016. With the completion of Phase I, staff is prepared to begin Phase II, which is the restoration of fish and wildlife habitat in Black Creek Marsh.

ASTI is serving as the project manager and is responsible for grant administration, project design, permitting, construction and contract oversight.

The request addresses the final stage of this grant, which is approximately 10,100 cubic-yards of material in the open water portion of the marsh. This work will benefit native fish species and water recreation activities such as kayaking.

Necessary permits for the project have been obtained from the DEQ and Army Corps of Engineers (ACOE). Selected bidders will be responsible to obtain soil erosion permits.

**Attachment: Black Marsh Dredging Project Area Drawings**





HURON-CLINTON METROPOLITAN AUTHORITY

BLACK CREEK MARSH RESTORATION

LAKE ST. CLAIR METROPARK

31300 METROPOLITAN PARKWAY,

HARRISON TOWNSHIP, MACOMB COUNTY, MICHIGAN 48045

DATE: 5/19/2017	SHEET: 1 of 4	GISCADD: JMD	CLIENT: Huron-Clinton Metropolitan Authority	PM: DCM	CHECKED: DCM	PROJECT: 9171
Revisions: 5-18-17 for Bidding						
ASTI File 9171						

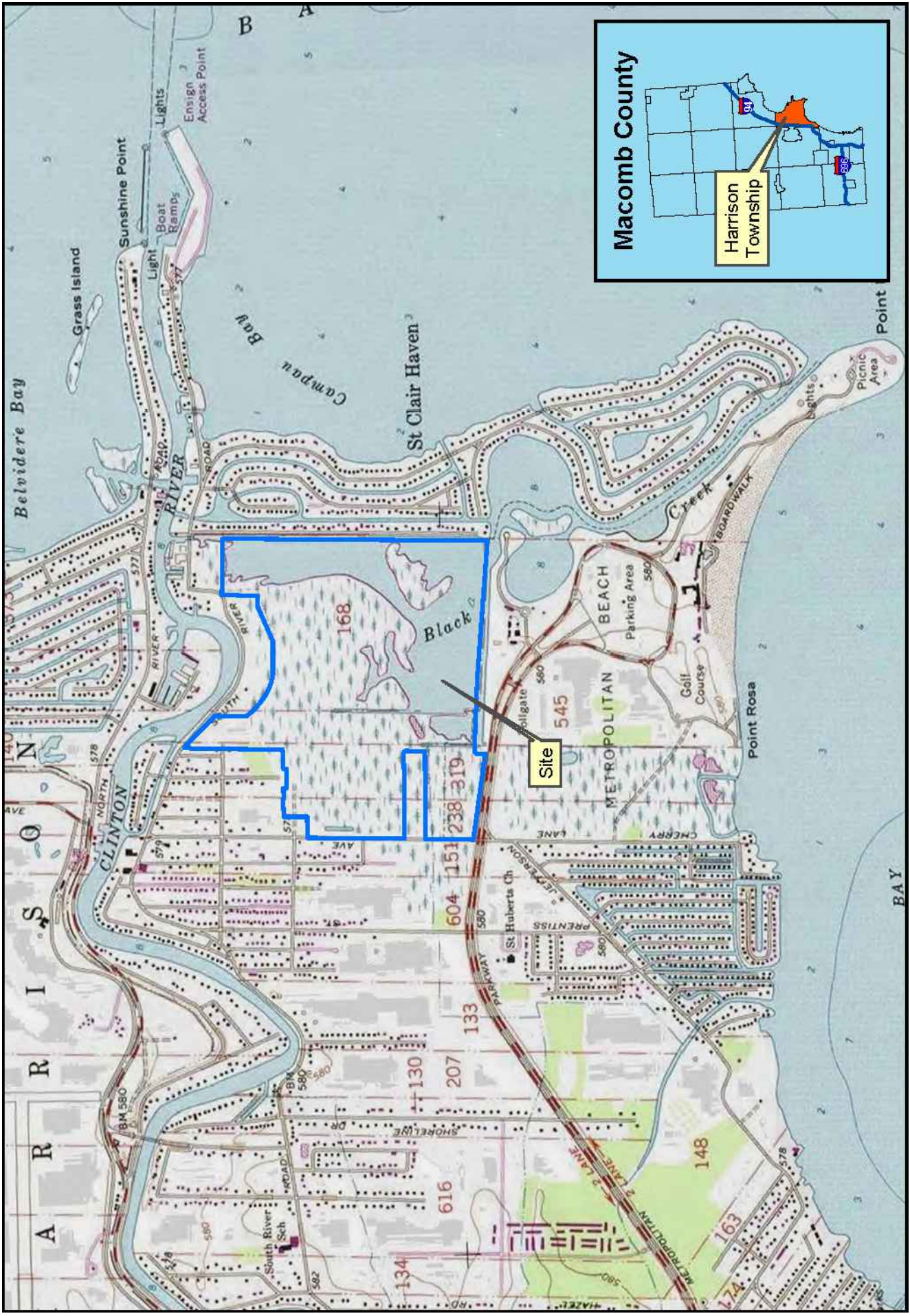
1

Black Creek Marsh Restoration  
Title Sheet

Lake St. Clair Metropark  
31300 Metropolitan Parkway  
Harrison Township, MI



OWNER	SITE PLAN DESIGN
HCMA 13000 HIGHRIDGE DR, BRIGHTON, MI 48114 P: 810-227-2757	ASTI ENVIRONMENTAL 10448 CITATION DRIVE, SUITE 100 BRIGHTON, MI 48116 P: 810-225-2800 F: 810-225-3800



LOCATION MAP

7-D-1a





Black Creek Marsh Restoration									
Ordinary High Water Mark (OHWM) feet (IGLD 1985)		576.3							
Ordinary Low Water Datum (LOW) feet (IGLD 1985)		572.3							
100-Yr Floodplain Elevation feet (NAVD 88)		NA							
PROPOSED ACTIVITY		Channel Construction		Pool B		Pool C		Pool D	
WETLAND DREDGE									
Length (ft.)		6,950		135		160		200	
Width (ft.)		8		115		65		65	
Depth (ft.)		3		3		3		3	
Dredge Volume (cu. yds.)		6,178		1,009		698		1,061	
Volume below OHWM (cu. yds.)		6,178		1,009		698		1,061	
Maximum Water Depth (ft.)		3		3		3		3	
Area Dredged (sq. ft.)		55,757		9,080		6,283		9,553	
Area Dredged (acres)		1.28		0.21		0.14		0.22	
TOTALS									
Area (sq. ft.)				87,641					
Area (acres)				2.00					
Volume (cu. yds.)				10,054					

**Note to Contractor: These are estimated quantities; construction contractor is responsible for determining the actual quantities that will be generated to complete the project with the proposed dimensions.**

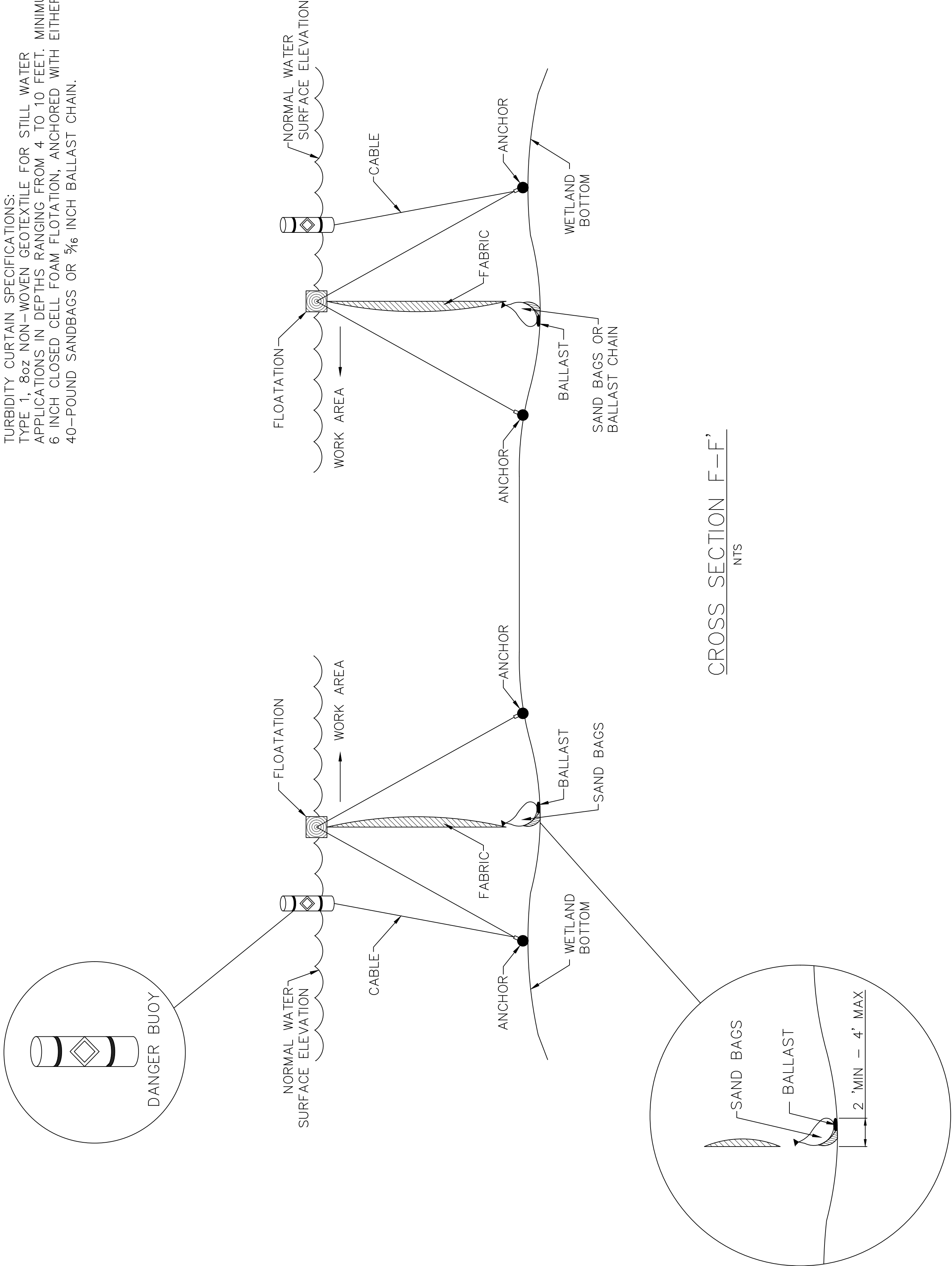
**SCOPE OF WORK:** Following is a general outline of the major work items in this Contract. It is not to be construed as a comprehensive description of work to be performed, and it does not relieve the Contractor from performing incidental and related work not listed. Quantities shown herein or on the drawings are approximate and may vary from the quantities actually provided which are necessary to meet lines, grades dimensions and other requirements of the Contract Documents. The Contractor shall not be entitled to additional compensation arising from required quantities to meet proposed grades, etc.

- A. Apply for Soil Erosion Control Permit from Macomb County (Architect/Engineer will supply the necessary drawings for the permit application).
- B. Dredge by mechanical means, approximately 10,100 cubic yards of material from approximately 2 acres of the Black Creek Marsh as follows: channels totaling 6,950 x 8 feet and four individual pools averaging 155 x 85 feet to a depth of approximately 1.5 feet above the Low Water Datum elevation of 572.3 feet International Great Lakes Datum (IGLD).
- C. Prior to initiating any dredging operations, the entire work area shall be contained by a silt/turbidity curtain surrounding the equipment and work area 200 x 4 feet. The turbidity curtain shall continuously and completely enclose the dredge area. The silt curtain shall be properly anchored onshore and offshore at 25-foot intervals to provide a stable and functional barrier. The silt curtain shall be maintained in effective working condition until all dredging is completed and turbidity has returned to background levels.
- D. All slurry resulting from any dewatering operation shall be discharged through a filter bag or pumped to a sump located away from wetlands and surfaced waters and allowed to filter through natural upland vegetation, gravel filters, or other engineered devices for a sufficient distance and/or period of time necessary to remove sediment or suspended particles.
- E. All dredged materials shall be dewatered to the greatest extent possible and disposed of at a type II landfill.





TURBIDITY CURTAIN SPECIFICATIONS:  
TYPE 1, 8oz NON-WOVEN GEOTEXTILE FOR STILL WATER  
APPLICATIONS IN DEPTHS RANGING FROM 4 TO 10 FEET. MINIMUM  
6 INCH CLOSED CELL FOAM FLOATATION, ANCHORED WITH EITHER  
40-POUND SANDBAGS OR 3/16 INCH BALLAST CHAIN.



- Notes:
- A.** Prior to initiating any dredging operations, the entire work area shall be contained by a silt/turbidity curtain surrounding the equipment and work area 200 x 4 feet. The turbidity curtain shall continuously and completely enclose the dredge area. The silt curtain shall be properly anchored onshore and offshore at 25-foot intervals to provide a stable and functional barrier. The silt curtain shall be maintained in effective working condition until all dredging is completed and turbidity has returned to background levels.
  - B.** All slurry resulting from any dewatering operation shall be discharged through a filter bag or pumped to a sump located away from wetlands and surfaced waters and allowed to filter through natural upland vegetation, gravel filters, or other engineered devices for a sufficient distance and/or period of time necessary to remove sediment or suspended particles.
  - C.** All dredged materials shall be dewatered to the greatest extent possible and disposed of at a type II landfill.

PARK	MONTHLY VEHICLE ENTRIES				MONTHLY TOLL REVENUE			
	Current	Previous	Prev 3 Yr Avg	Change from Average	Current	Previous	Prev 3 Yr Avg	Change from Average
Lake St Clair	38,659	47,866	44,258	-13%	\$ 206,513	\$ 287,156	\$ 237,593	-13%
Wolcott Mill	8,169	6,566	5,516	48%	\$ 7,700	\$ 1,043	\$ 444	1633%
Stony Creek	58,992	68,397	66,414	-11%	\$ 319,150	\$ 412,005	\$ 357,105	-11%
Indian Springs	10,426	11,708	11,329	-8%	\$ 43,667	\$ 53,863	\$ 44,891	-3%
Kensington	83,820	90,925	91,718	-9%	\$ 372,420	\$ 417,516	\$ 348,357	7%
Huron Meadows	9,785	10,901	9,830	0%	\$ 4,444	\$ 4,282	\$ 4,956	-10%
Hudson Mills	21,692	23,140	24,437	-11%	\$ 71,492	\$ 91,042	\$ 75,069	-5%
Lower Huron / Willow/Oakwoods	57,179	62,061	57,819	-1%	\$ 111,985	\$ 158,014	\$ 133,482	-16%
Lake Erie	19,618	23,407	18,198	8%	\$ 62,689	\$ 89,833	\$ 80,239	-22%
Monthly TOTALS	308,340	344,971	329,518	-6%	\$ 1,200,060	\$ 1,514,754	\$ 1,282,137	-6%

PARK	Y-T-D VEHICLE ENTRIES				Y-T-D TOLL REVENUE			
	Current	Previous	Prev 3 Yr Avg	Change from Average	Current	Previous	Prev 3 Yr Avg	Change from Average
Lake St Clair	111,490	117,277	112,536	-1%	\$ 492,469	\$ 545,290	\$ 462,964	6%
Wolcott Mill	24,953	22,851	17,900	39%	\$ 19,843	\$ 2,863	\$ 1,324	1398%
Stony Creek	162,964	171,846	157,827	3%	\$ 935,458	\$ 947,999	\$ 823,638	14%
Indian Springs	26,533	27,918	25,772	3%	\$ 138,951	\$ 138,434	\$ 116,249	20%
Kensington	252,605	260,471	256,585	-2%	\$ 1,118,054	\$ 1,048,984	\$ 879,351	27%
Huron Meadows	28,307	30,662	30,876	-8%	\$ 21,587	\$ 29,640	\$ 35,307	-39%
Hudson Mills	67,806	66,120	66,143	3%	\$ 234,495	\$ 231,981	\$ 209,895	12%
Lower Huron / Willow/Oakwoods	195,269	190,392	174,078	12%	\$ 340,069	\$ 353,620	\$ 294,997	15%
Lake Erie	61,506	64,312	53,718	14%	\$ 253,937	\$ 272,633	\$ 233,891	9%
Monthly TOTALS	931,433	951,849	895,436	4%	\$ 3,554,863	\$ 3,571,444	\$ 3,057,615	16%

PARK	MONTHLY PARK REVENUE				Y-T-D PARK REVENUE			
	Current	Previous	Prev 3 Yr Avg	Change from Average	Current	Previous	Prev 3 Yr Avg	Change from Average
Lake St Clair	\$ 241,628	\$ 462,480	\$ 367,228	-34%	\$ 762,779	\$ 825,691	\$ 686,480	11%
Wolcott Mill	\$ 30,330	\$ 84,279	\$ 68,879	-56%	\$ 113,114	\$ 169,589	\$ 150,537	-25%
Stony Creek	\$ 531,056	\$ 687,763	\$ 596,840	-11%	\$ 1,365,017	\$ 1,423,921	\$ 1,253,881	9%
Indian Springs	\$ 148,372	\$ 169,908	\$ 164,119	-10%	\$ 339,748	\$ 351,589	\$ 314,074	8%
Kensington	\$ 595,108	\$ 680,505	\$ 585,400	2%	\$ 1,572,372	\$ 1,544,395	\$ 1,340,599	17%
Huron Meadows	\$ 115,952	\$ 124,541	\$ 112,388	3%	\$ 205,825	\$ 231,648	\$ 216,698	-5%
Hudson Mills	\$ 136,479	\$ 160,191	\$ 147,329	-7%	\$ 365,086	\$ 361,361	\$ 352,305	4%
Lower Huron / Willow/Oakwoods	\$ 233,276	\$ 351,420	\$ 290,280	-20%	\$ 522,317	\$ 633,925	\$ 542,236	-4%
Lake Erie	\$ 190,220	\$ 248,682	\$ 231,121	-18%	\$ 465,449	\$ 516,989	\$ 472,153	-1%
Y-T-D TOTALS	\$ 2,222,420	\$ 2,969,769	\$ 2,563,585	-13%	\$ 5,711,707	\$ 6,059,108	\$ 5,328,961	7%

District	Y-T-D Vehicle Entries by Management Unit				Y-T-D Total Revenue by Management Unit			
	Current	Previous	Prev 3 Yr Avg	Change from Average	Current	Previous	Prev 3 Yr Avg	Change from Average
Eastern	299,407	311,974	288,264	4%	2,240,910	2,419,201	2,090,898	7%
Western	375,251	385,171	379,376	-1%	2,483,031	2,488,993	2,223,675	12%
Southern	256,775	254,704	227,796	13%	987,766	1,150,914	1,014,388	-3%

# HURON-CLINTON METROPARKS MONTHLY STATISTICS

May, 2017

GOLF THIS MONTH	MONTHLY ROUNDS				MONTHLY REVENUE			
	Current	Previous	Prev 3 Yr Avg	Change from Average	Current	Previous	Prev 3 Yr Avg	Change from Average
Stony Creek	3,911	4,619	4,418	-11%	\$ 129,622	\$ 154,150	\$ 139,976	-7%
Indian Springs	3,214	3,442	3,413	-6%	\$ 89,732	\$ 85,629	\$ 87,103	3%
Kensington	4,175	4,483	4,381	-5%	\$ 104,079	\$ 116,154	\$ 107,574	-3%
Huron Meadows	3,393	3,806	3,480	-2%	\$ 110,708	\$ 119,460	\$ 98,479	12%
Hudson Mills	2,263	2,426	2,493	-9%	\$ 52,464	\$ 55,463	\$ 50,585	4%
Willow	2,673	3,754	3,200	-16%	\$ 80,156	\$ 108,149	\$ 87,354	-8%
Lake Erie	3,303	3,961	3,610	-9%	\$ 90,122	\$ 101,425	\$ 85,234	6%
Total Regulation	22,932	26,491	24,995	-8%	\$ 656,883	\$ 740,430	\$ 656,306	0%
LSC Par 3	818	1,141	973	-16%	\$ 5,130	\$ 6,924	\$ 6,048	-15%
LSC Foot Golf	47	87	63	-25%	\$ 316	\$ 629	\$ 447	-29%
L. Huron Par 3 (closed)	0	515	639	-	\$ -	\$ 3,717	\$ 4,437	-
L. Huron Foot Golf (closed)	0	174	84	-	\$ -	\$ 999	\$ 525	-
Total Golf	23,797	28,408	26,755	-11%	\$ 662,329	\$ 752,699	\$ 667,763	-1%

GOLF Y-T-D	GOLF ROUNDS Y-T-D				GOLF REVENUE Y-T-D			
	Current	Previous	Prev 3 Yr Avg	Change from Average	Current	Previous	Prev 3 Yr Avg	Change from Average
Stony Creek	6,098	6,685	6,305	-3%	\$ 192,288	\$ 214,719	\$ 208,324	-8%
Indian Springs	4,974	5,246	4,885	2%	\$ 134,984	\$ 127,411	\$ 124,158	9%
Kensington	6,602	6,872	6,534	1%	\$ 158,140	\$ 169,284	\$ 161,605	-2%
Huron Meadows	5,611	5,947	5,226	7%	\$ 172,498	\$ 180,466	\$ 147,240	17%
Hudson Mills	3,319	3,514	3,470	-4%	\$ 76,799	\$ 79,256	\$ 77,061	0%
Willow	3,479	5,411	4,685	-26%	\$ 103,720	\$ 156,367	\$ 145,713	-29%
Lake Erie	5,107	5,744	5,064	1%	\$ 140,685	\$ 147,919	\$ 130,787	8%
Total Regulation	35,190	39,419	36,169	-3%	\$ 979,114	\$ 1,075,422	\$ 994,888	-2%
LSC Par 3	1,099	1,523	1,221	-10%	\$ 6,876	\$ 9,440	\$ 9,062	-24%
LSC Foot Golf	75	132	80	-6%	\$ 518	\$ 858	\$ 535	-3%
L. Huron Par 3 (closed)	0	865	918	-	\$ -	\$ 6,188	\$ 6,400	-
L. Huron Foot Golf (closed)	0	217	106	-	\$ -	\$ 1,280	\$ 666	-
Total Golf	36,364	42,156	38,493	-6%	\$ 986,508	\$ 1,093,187	\$ 1,011,551	-2%

AQUATICS THIS MONTH	PATRONS THIS MONTH				MONTHLY REVENUE			
	Current	Previous	Prev 3 Yr Avg	Change from Average	Current	Previous	Prev 3 Yr Avg	Change from Average
Lake St. Clair	0	4,229	3,306	-	\$ 6,420	\$ 21,132	\$ 14,596	-56%
Stony Creek Rip Slide	1,138	1,879	2,041	-44%	\$ 5,778	\$ 9,738	\$ 7,549	-23%
KMP Splash	1,302	3,482	2,884	-55%	\$ 7,934	\$ 19,762	\$ 15,132	-48%
Hudson Mills Rip Slide	0	159	129	-	\$ -	\$ 1,502	\$ 892	-
Lower Huron	1,811	5,307	4,575	-60%	\$ 18,719	\$ 53,072	\$ 44,189	-58%
Willow	435	1,650	1,178	-63%	\$ 2,570	\$ 7,952	\$ 5,534	-54%
Lake Erie	699	3,145	2,646	-74%	\$ 6,099	\$ 24,703	\$ 16,186	-62%
TOTALS	5,385	19,851	16,760	-68%	\$ 47,520	\$ 137,861	\$ 104,079	-54%

AQUATICS Y-T-D	PATRONS Y-T-D				REVENUE Y-T-D			
	Current	Previous	Prev 3 Yr Avg	Change from Average	Current	Previous	Prev 3 Yr Avg	Change from Average
Lake St. Clair	0	4,229	3,306	-	\$ 6,420	\$ 21,132	\$ 14,596	-56%
Stony Creek Rip Slide	1,138	1,879	2,041	-44%	\$ 5,778	\$ 9,738	\$ 7,549	-23%
KMP Splash	1,302	3,482	2,884	-55%	\$ 10,334	\$ 22,052	\$ 16,912	-39%
Hudson Mills Rip Slide	0	159	129	-	\$ -	\$ 1,502	\$ 892	-
Lower Huron	1,811	5,307	4,575	-60%	\$ 18,719	\$ 53,072	\$ 44,189	-58%
Willow	435	1,650	1,178	-63%	\$ 2,570	\$ 7,952	\$ 5,534	-54%
Lake Erie	699	3,145	2,646	-74%	\$ 6,099	\$ 24,703	\$ 16,186	-62%
TOTALS	5,385	19,851	16,760	-68%	\$ 49,920	\$ 140,151	\$ 105,859	-53%



PARK	Seasonal Activities this Month				Monthly Revenue			
	Current	Previous	Prev 3 Yr Avg	Change from Average	Current	Previous	Prev 3 Yr Avg	Change from Average
<b>Lake St. Clair</b>								
Welsh Center	0	1	3	-	\$ 800	\$ 2,200	\$ 3,133	-74%
Shelters	28	56	49	-42%	\$ 8,700	\$ 13,520	\$ 13,375	-35%
Boat Launches	650	622	646	1%	\$ -	\$ -	\$ -	-
Marina	426	555	447	-5%	\$ 328	\$ 2,250	\$ 2,209	-85%
Mini-Golf	620	713	752	-18%	\$ 2,229	\$ 2,586	\$ 2,609	-15%
<b>Wolcott</b>								
Activity Center	10	6	11	-6%	\$ 1,500	\$ 1,500	\$ 2,990	-50%
<b>Stony Creek</b>								
Disc Golf Daily	2,110	2,977	3,450	-39%	\$ 6,330	\$ 10,001	\$ 9,386	-33%
Disc Golf Annual	17	29	24	-28%	\$ 895	\$ 1,475	\$ 1,112	-19%
Total Disc Golf	2,127	3,006	3,474	-39%	\$ 7,225	\$ 11,476	\$ 10,498	-31%
Shelters	65	73	60	9%	\$ 14,625	\$ 14,625	\$ 14,108	4%
Boat Rental	1,154	1,668	1,988	-42%	\$ 12,539	\$ 17,538	\$ 19,130	-34%
Boat Launches	126	54	213	-41%	\$ -	\$ -	\$ -	-
<b>Indian Springs</b>								
Shelters	3	11	12	-74%	\$ 450	\$ 1,450	\$ 1,483	-70%
Event Room	4	4	4	-8%	\$ 7,900	\$ 7,070	\$ 7,129	11%
<b>Kensington</b>								
Disc Golf Daily	3,309	4,181	5,256	-37%	\$ 9,927	\$ 12,543	\$ 12,439	-20%
Disc Golf Annual	19	24	26	-26%	\$ 1,045	\$ 1,160	\$ 1,230	-15%
Total Disc Golf	3,328	4,205	5,281	-37%	\$ 10,972	\$ 13,703	\$ 13,670	-20%
Shelters	65	75	76	-14%	\$ 14,625	\$ 18,500	\$ 17,542	-17%
Boat Rental	1,345	1,957	2,013	-33%	\$ 16,223	\$ 26,408	\$ 24,899	-35%
<b>Huron Meadows</b>								
Shelters	4	4	4	9%	\$ 800	\$ 1,400	\$ 933	-14%
<b>Hudson Mills</b>								
Disc Golf Daily	1,468	1,464	1,937	-24%	\$ 4,404	\$ 4,392	\$ 4,982	-12%
Disc Golf Annual	21	21	27	-22%	\$ 1,115	\$ 1,115	\$ 1,312	-15%
Total Disc Golf	1,489	1,485	1,964	-24%	\$ 5,519	\$ 5,507	\$ 6,294	-12%
Shelters	21	16	19	11%	\$ 4,200	\$ 3,200	\$ 3,800	11%
Canoe Rental	213	522	380	-44%	\$ 982	\$ 2,398	\$ 1,866	-47%
<b>Lower Huron / Willow / Oakwoods</b>								
Shelters	49	45	43	15%	\$ 10,600	\$ 9,450	\$ 9,150	16%
<b>Lake Erie</b>								
Shelters	13	15	12	11%	\$ 2,900	\$ 3,600	\$ 2,700	7%
Boat Launches	2,117	2,394	2,074	2%	\$ -	\$ -	\$ -	-
Marina	0	0	5	-	\$ 26,378	\$ 28,065	\$ 28,590	-8%

PARK	Seasonal Activities Y-T-D				Seasonal Revenue Y-T-D			
	Current	Previous	Prev 3 Yr Avg	Change from Average	Current	Previous	Prev 3 Yr Avg	Change from Average
<b>Lake St. Clair</b>								
Welsh Center	23	9	17	33%	\$ 19,200	\$ 8,675	\$ 12,242	57%
Shelters	112	147	117	-5%	\$ 32,750	\$ 36,345	\$ 36,367	-10%
Boat Launches	763	872	755	1%	\$ -	\$ -	\$ -	-
Marina	427	559	448	-5%	\$ 342	\$ 2,278	\$ 2,244	-85%
Mini-Golf	620	713	752	-18%	\$ 2,229	\$ 2,586	\$ 2,609	-15%
<b>Wolcott</b>								
Activity Center	38	34	44	-14%	\$ 7,000	\$ 8,000	\$ 9,923	-29%
<b>Stony Creek</b>								
Disc Golf Daily	4,991	5,470	5,915	-16%	\$ 15,051	\$ 17,480	\$ 15,997	-6%
Disc Annual	117	121	90	30%	\$ 6,275	\$ 6,375	\$ 4,398	43%
Total Disc Golf	5,108	5,591	6,004	-15%	\$ 21,326	\$ 23,855	\$ 20,395	5%
Shelters	191	228	205	-7%	\$ 42,875	\$ 45,435	\$ 44,145	-3%
Boat Rental	1,154	1,668	1,988	-42%	\$ 12,539	\$ 17,538	\$ 19,130	-34%
Boat Launches	149	75	294	-49%	\$ -	\$ -	\$ -	-
<b>Indian Springs</b>								
Shelters	16	29	27	-41%	\$ 3,050	\$ 4,450	\$ 4,250	-28%
Event Room	25	23	18	42%	\$ 45,400	\$ 40,370	\$ 29,799	52%
<b>Kensington</b>								
Disc Golf Daily	7,971	8,112	8,311	-4%	\$ 23,913	\$ 24,336	\$ 21,985	9%
Disc Annual	83	133	134	-38%	\$ 5,122	\$ 7,015	\$ 6,325	-19%
Total Disc Golf	8,054	8,245	8,445	-5%	\$ 29,035	\$ 31,351	\$ 28,311	3%
Shelters	209	227	258	-19%	\$ 51,200	\$ 58,035	\$ 60,377	-15%
Boat Rental	1,345	1,957	2,013	-33%	\$ 16,223	\$ 26,408	\$ 24,899	-35%
<b>Huron Meadows</b>								
Shelters	11	15	13	-18%	\$ 2,200	\$ 3,800	\$ 3,000	-27%
<b>Hudson Mills</b>								
Disc Golf Daily	4,021	3,239	3,855	4%	\$ 12,063	\$ 9,717	\$ 10,120	19%
Disc Annual	135	106	117	16%	\$ 7,225	\$ 5,670	\$ 5,763	25%
Total Disc Golf	4,156	3,345	3,971	5%	\$ 19,288	\$ 15,387	\$ 15,883	21%
Shelters	64	58	63	1%	\$ 12,800	\$ 11,600	\$ 12,667	1%
Canoe Rental	213	522	380	-44%	\$ 5,698	\$ 2,398	\$ 1,866	205%
<b>Lower Huron / Willow / Oakwoods</b>								
Shelters	153	163	155	-1%	\$ 22,950	\$ 35,375	\$ 33,525	-32%
<b>Lake Erie</b>								
Shelters	31	41	41	-24%	\$ 4,100	\$ 9,300	\$ 9,167	-55%
Boat Launches	5,884	6,330	4,935	19%	\$ -	\$ -	\$ -	-
Marina	0	3	6	-	\$ 21,283	\$ 53,322	\$ 52,949	-60%

## INTERPRETIVE FACILITIES

PARK	Monthly Patrons Served				YTD Patrons Served			
	(total program participants and non-program visitors)				(total program participants and non-program visitors)			
	Current	Previous	Prev 3 Yr Avg	Change from Average	Current	Previous	Prev 3 Yr Avg	Change from Average
Lake St Clair	26,420	26,014	24,883	6%	67,611	53,390	56,244	20%
Wolcott Mill	3,789	6,102	4,331	-13%	13,969	16,727	12,868	9%
Wolcott Farm	5,496	16,322	11,070	-50%	18,760	32,141	27,855	-33%
Stony Creek	21,752	23,461	21,655	0%	82,592	80,025	75,129	10%
Eastern Mobile Center	585	1,047	816	-28%	8,317	3,263	5,790	44%
Indian Springs	13,377	12,876	13,802	-3%	31,727	32,021	33,021	-4%
Kens NC	28,985	34,042	32,690	-11%	106,991	110,178	108,295	-1%
Kens Farm	0	40,067	28,432	-	69,613	120,200	106,316	-35%
Western Mobile Center	491	1,261	1,928	-75%	4,980	8,579	9,714	-49%
Hudson Mills	2,771	3,583	3,692	-25%	14,729	16,526	17,337	-15%
Oakwoods	14,401	15,918	15,147	-5%	59,388	64,873	56,598	5%
Lake Erie	12,912	11,681	10,117	28%	56,098	38,049	36,303	55%
Southern Mobile Center	2,014	1,506	1,760	14%	4,014	2,237	3,126	28%
Totals	132,993	193,880	170,324	-22%	538,789	578,209	548,597	-2%

PARK	Monthly Revenue				YTD Revenue			
	Current	Previous	Prev 3 Yr Avg	Change from Average	Current	Previous	Prev 3 Yr Avg	Change from Average
Lake St Clair	\$ 6,862	\$ 5,814	\$ 5,639	22%	\$ 15,248	\$ 14,564	\$ 12,655	20%
Wolcott Mill	\$ 939	\$ 1,491	\$ 1,083	-13%	\$ 6,349	\$ 5,869	\$ 5,429	17%
Wolcott Farm	\$ 9,782	\$ 8,246	\$ 8,595	14%	\$ 39,988	\$ 33,241	\$ 32,037	25%
Wagon Rides	\$ 2,265	\$ 1,902	\$ 1,101	106%	\$ 7,709	\$ 4,689	\$ 3,024	155%
Livestock/Produce	\$ 2,343	\$ 1,796	\$ 2,089	12%	\$ 13,052	\$ 7,070	\$ 15,567	-16%
FARM TOTAL	\$ 14,390	\$ 11,944	\$ 11,785	22%	\$ 60,749	\$ 45,000	\$ 50,628	20%
Stony Creek	\$ 4,188	\$ 5,456	\$ 4,223	-1%	\$ 13,048	\$ 13,053	\$ 11,124	17%
Eastern Mobile Center	\$ 430	\$ 280	\$ 93	361%	\$ 2,630	\$ 280	\$ 93	2718%
Indian Springs	\$ 4,184	\$ 6,056	\$ 6,961	-40%	\$ 12,922	\$ 14,118	\$ 15,620	-17%
Kens NC	\$ 6,371	\$ 4,465	\$ 4,285	49%	\$ 13,610	\$ 14,330	\$ 11,336	20%
Kens Farm	\$ 4,743	\$ 6,377	\$ 5,707	-17%	\$ 18,246	\$ 43,686	\$ 32,753	-44%
Wagon Rides	\$ 3,725	\$ 2,768	\$ 3,090	21%	\$ 16,720	\$ 13,534	\$ 12,033	39%
Livestock/Produce	\$ 150	\$ 593	\$ 590	-75%	\$ 3,420	\$ 10,658	\$ 9,660	-65%
FARM TOTAL	\$ 8,618	\$ 9,738	\$ 9,387	-8%	\$ 38,386	\$ 67,878	\$ 54,445	-29%
Western Mobile Center	\$ 775	\$ 3,663	\$ 2,533	-69%	\$ 9,810	\$ 13,842	\$ 11,395	-14%
Hudson Mills	\$ 1,038	\$ 1,384	\$ 1,521	-32%	\$ 5,705	\$ 7,357	\$ 8,035	-29%
Oakwoods	\$ -	\$ 2,163	\$ 2,973	-	\$ 4,546	\$ 6,035	\$ 6,533	-30%
Lake Erie	\$ -	\$ 1,327	\$ 1,471	-	\$ 7,343	\$ 4,584	\$ 4,872	51%
Southern Mobile Center	\$ -	\$ 244	\$ 81	-	\$ 3,380	\$ 419	\$ 140	2320%
Totals	\$ 47,794	\$ 54,024	\$ 52,036	-8%	\$ 193,726	\$ 207,328	\$ 192,305	1%

BREAKDOWN OF ATTENDANCE	ON-SITE Programs and Attendance				OFF-SITE Programs and Attendance			
	CURRENT YEAR		PREVIOUS YEAR		CURRENT YEAR		PREVIOUS YEAR	
	Programs	Attendance	Programs	Attendance	Programs	Attendance	Programs	Attendance
Lake St Clair	187	4,684	115	4,368	-	-	-	-
Wolcott Mill	5	275	6	99	1	1,000	-	-
Wolcott Farm	83	2,105	71	2,226	1	40	4	155
Stony Creek	105	3,252	142	4,395	-	-	3	100
Eastern Mobile Center					22	585	7	1,047
Indian Springs	90	5,611	85	5,125	12	704	16	617
Kens NC	68	2,302	64	1,714	5	232	9	284
Kens Farm	-	-	144	3,281	-	-	-	-
Western Mobile Center					17	491	39	1,261
Hudson Mills	4	79	29	913	6	192	5	170
Oakwoods	30	731	60	1,487	-	-	-	-
Lake Erie	56	1,368	68	1,118	1	25	-	-
Southern Mobile Center					21	2,014	19	1,506
Totals	628	20,407	784	24,726	86	5,283	102	5,140
BREAKDOWN OF ATTENDANCE	OTHER VISITORS (Non-programs)							
	Current	Previous						
Lake St Clair	21,736	21,646						
Wolcott Mill	2,514	6,003						
Wolcott Farm	3,351	13,941						
Stony Creek	18,500	18,966						
Indian Springs	7,062	7,134						
Kens NC	26,451	32,044						
Kens Farm	-	36,786						
Hudson Mills	2,500	2,500						
Oakwoods	13,670	14,431						
Lake Erie	11,519	10,563						
Totals	107,303	164,014						

"ON-SITE" - Statistics includes both programs offered to the public and programs offered to school and scout groups.

"OFF-SITE" - Statistics includes outreach programs at schools, special events such as local fairs, or outdoor related trade shows.

"OTHER VISITORS" - Represents patrons to interpretive centers who visit to view exhibits, walk trails, and generally just enjoy the outdoors.