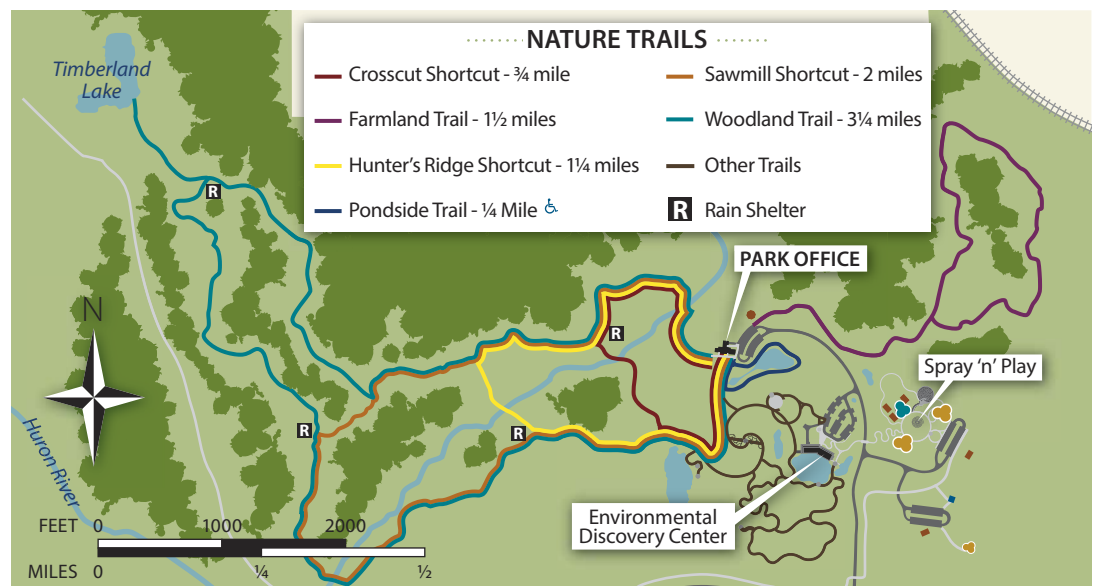
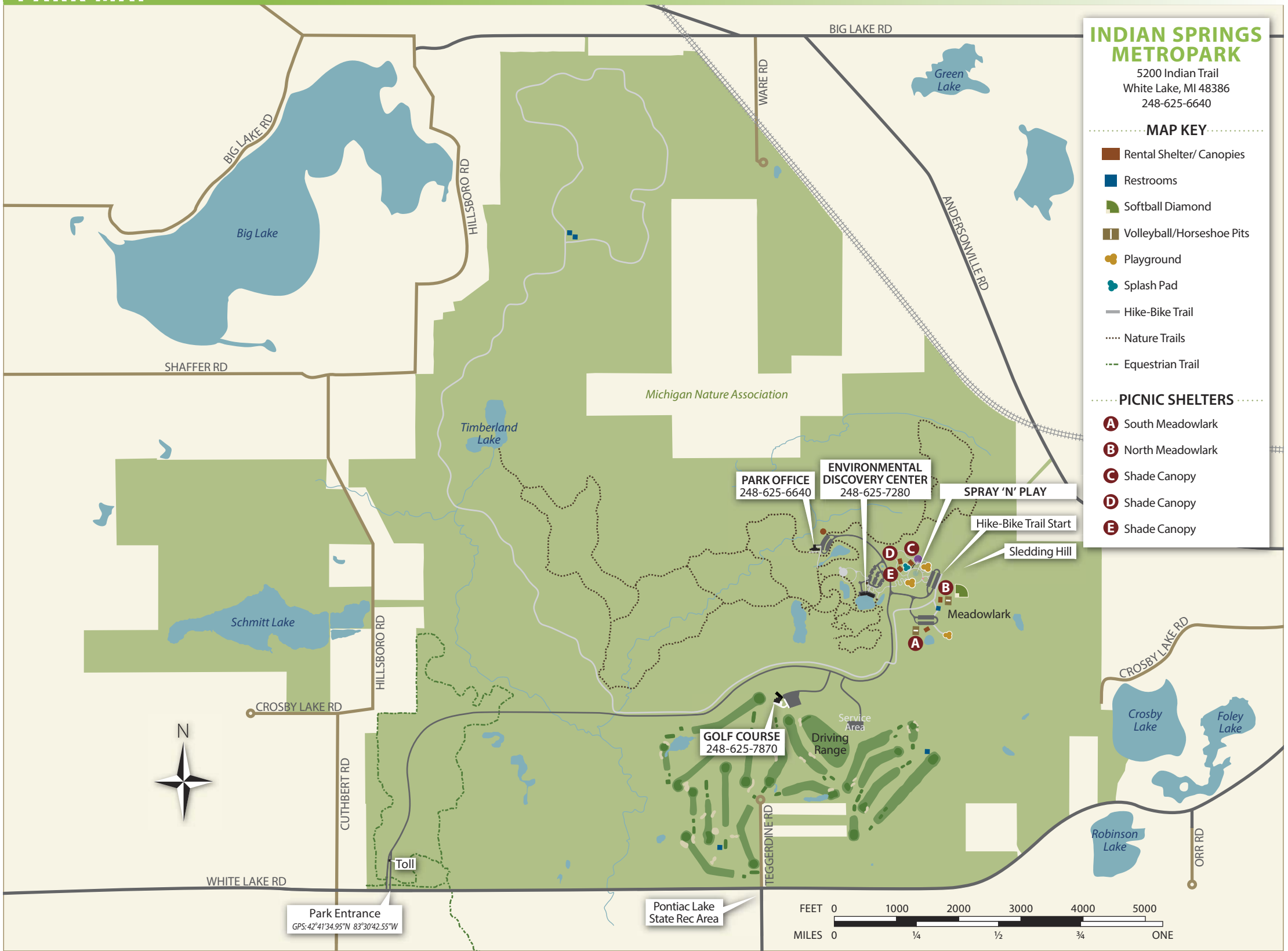


# PARK MAP



**HURON-CLINTON METROPARKS**  
13000 High Ridge Drive, Brighton, MI 48114-9058  
Phone or TTY: 810-227-2757 or 1-800-47-PARKS | www.metroparks.com

**CONNECT WITH US!**

**BOARD OF COMMISSIONERS**

Timothy J. McCarthy Governor Appointee	Robert Marans Washtenaw County	Jaye Quadrozzi Oakland County	Bernard Parker Wayne County
Steven E. Williams Livingston County	Kurt L. Heise Governor Appointee	John Paul Rea Macomb County	

**EXECUTIVE DIRECTOR**  
George Phifer

2017

## STAY CONNECTED WITH US!

Join our email list to receive updates on parks and activities.

## VISIT YOUR METROPARKS

Delhi • Dexter-Huron • Hudson Mills • Huron Meadows • Indian Springs  
Kensington • Lake Erie • Lake St. Clair • Lower Huron • Oakwoods  
Stony Creek • Willow • Wolcott Mill

## ACCESSIBILITY

For special accessibility needs, please contact the park or facility at least 72 hours in advance of your visit.

## METROPARKS SAFETY

- Please report any accident or unsafe condition to a park employee.
- Personal protective equipment is recommended (life jacket, helmet, etc).
- Dispose of hot coals in bins marked "Hot Coals" only. If not available, contact a park employee.
- Read and adhere to trail rules and regulations.

## DONATIONS

The Huron-Clinton Metroparks Foundation accepts financial gifts that enhance the Metroparks. For more information, call 800-47-PARKS.

## PROTECT AND PRESERVE YOUR METROPARKS

The Huron-Clinton Metroparks are committed to environmental stewardship through planning, management, and redevelopment of facilities.

## VOLUNTEER OPPORTUNITIES

You can make a difference at your Metroparks! Join the Metroparks Volunteer team by calling our volunteer services supervisor at 810-494-6020.

Encompassing the headwaters of the Huron River, Indian Springs Metropark's natural areas provide a glimpse of what Southeast Michigan looked like centuries ago. Discover a prairie, a fen, and towering hardwoods during your visit to this 2,454 acre-park. The park features a challenging 18-hole golf course, Environmental Discovery Center, Spray 'n' Play children's area, a paved hike-bike trail, nature trails, and picnic areas. The park is also popular for wedding ceremonies and receptions.

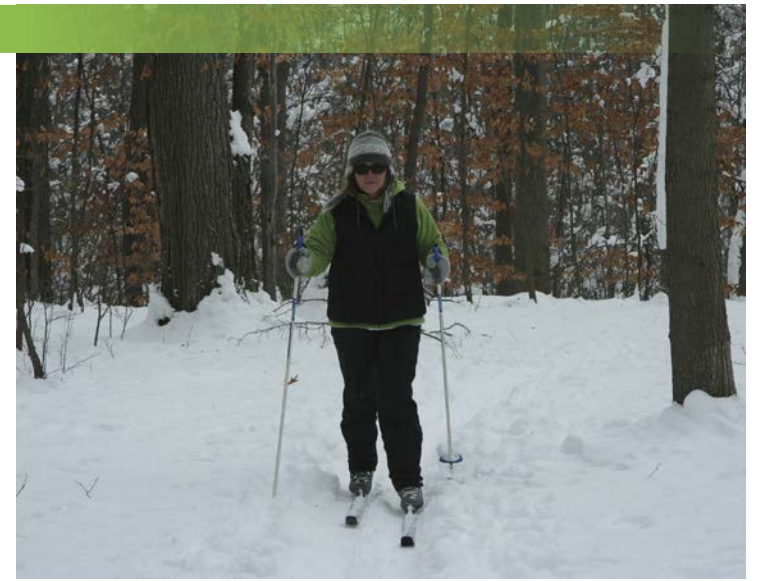


# INDIAN SPRINGS

[www.metroparks.com](http://www.metroparks.com)



## ACTIVITIES



### CONCESSIONS

Food and beverages, including beer, wine, and liquor are sold at the Golf Starter Building. No outside alcoholic beverages or coolers allowed.

### EQUESTRIAN TRAIL

This 2.5 mile loop connects to Pontiac Lake State Recreation Area, where the staging area is located. Pets and biking are prohibited on the trails.

### GOLF

248-625-7870

This 6,688 yard, 18-hole, par-72 course and driving range offers power carts, pull carts, and clubs for rent. Senior (55+) and junior (20 and younger) rates are available. Some restrictions apply.

### HIKE-BIKE TRAIL

Five miles of paved trail (eight miles round-trip) allows bicyclists, inline skaters, hikers, and joggers to enjoy the beauty of the park's diverse habitats. Pets on a 6 foot leash are permitted. Motor vehicles and horses are prohibited.

### PETS

Dogs and other pets are permitted in the park only when kept on a six foot (or less) leash. Pets are not permitted in the nature areas, buildings, on the equestrian trails, cross-country ski trails, or golf course.

### PICNICS

Tables, grills and shelters are located near the Park Office and Meadowlark picnic areas. The Meadowlark picnic area has two shelters, a volleyball court, a barrier-free wood playscape, and horseshoe pits. Pets are prohibited at the Park Office picnic area. Please register with the Park Office if you have a group of 50 people or more. Shelters can be reserved for a fee.

### SPRAY 'N' PLAY/ MEADOWLARK PLAYGROUND

This area features three distinct play areas for older kids and a separate area for toddlers. Youngsters can get soaked in the water sprayground, climb a rock wall and a cargo net, or explore their way through a maze. The toddler area includes a painted labyrinth, bucket spinners, and a slide. The playground is open year-round. The water spray area is open Memorial Day through Labor Day.

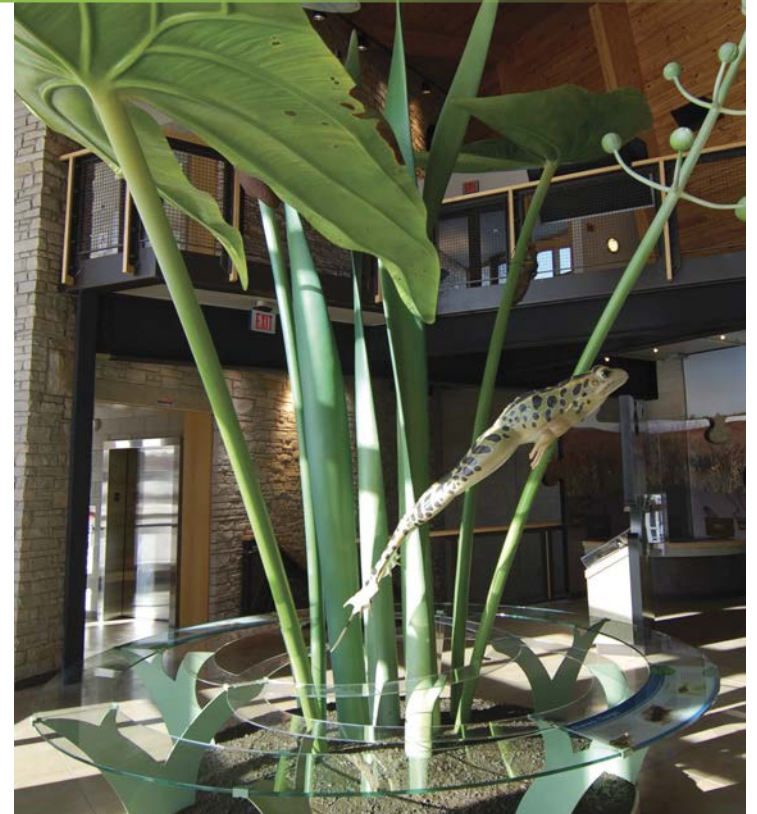
### WINTER SPORTS CROSS-COUNTRY SKIING

Enjoy nearly 12 miles of classical groomed ski trails, weather conditions permitting.

### SLEDDING

A sledding hill is located in the Meadowlark picnic area. No equipment rentals.

## ENVIRONMENTAL DISCOVERY CENTER (EDC)



### ENVIRONMENTAL DISCOVERY CENTER HOURS • 248-625-7280

9 a.m. – 5 p.m.

Explore the diversity of Southeast Michigan's native habitats. The Environmental Discovery Center (EDC) is a gateway into the complexity and beauty of prairies, wetlands, and woods all under one roof.

The EDC features 60 acres of restored and recreated native ecosystems. The award-winning EDC building contains classrooms, a biology lab and a 200-person event room. Exhibits explain the ecosystems seen outdoors. The pond viewing room gives an underwater peek at pond life including native fish and plants.

### NATURE TRAILS

Self-guided nature trails on flat terrain meander through the wet woodlands, meadows and fields. Find your way to the headwaters of the Huron River, and discover the area known as the Huron Swamp, one of the last great natural areas in Southeast Michigan. The trails encircle the pond and wander through various habitats including a native plant garden and oak openings. Start your exploration from the parking lot or building. The trails are open during posted park hours.

### POND PROMENADE

### TURKEYFOOT TRAIL

### LUPINE LOOP

### WOODLAND TRAIL

### FARMLAND TRAIL

### PONDSIDE TRAIL

This short, hard-surfaced, ADA accessible trail offers choice views of the pond.

### PLEASE REMEMBER

- All collecting is prohibited.
- Walk slowly and quietly and remain on trails.
- Running, jogging, bicycles, pets, motorized vehicles and horses are not permitted on the nature trails.
- Picnicking is not allowed within the nature trails area.
- Please leave all radios, toys, and sports equipment in your car.
- Follow all park rules and regulations.

### SPECIAL EVENTS

The interpreters invite you to participate in nature walks, special events, and programs. These are offered periodically throughout the year. Schools, scouts, and community groups events can be arranged.

### GROUP APPOINTMENTS

Group appointments for nature programs and field trips are available.

## BANQUET FACILITY



Host your wedding or party in the Event Room, where floor-to-ceiling windows overlooking the picturesque pond bring the great outdoors inside to your event! Guests can explore the walkways and decks at the EDC, or just enjoy the panoramic view. Weddings may be held anywhere at the park; ceremonies taking place on the EDC grounds are required to rent the Event Room for the reception.