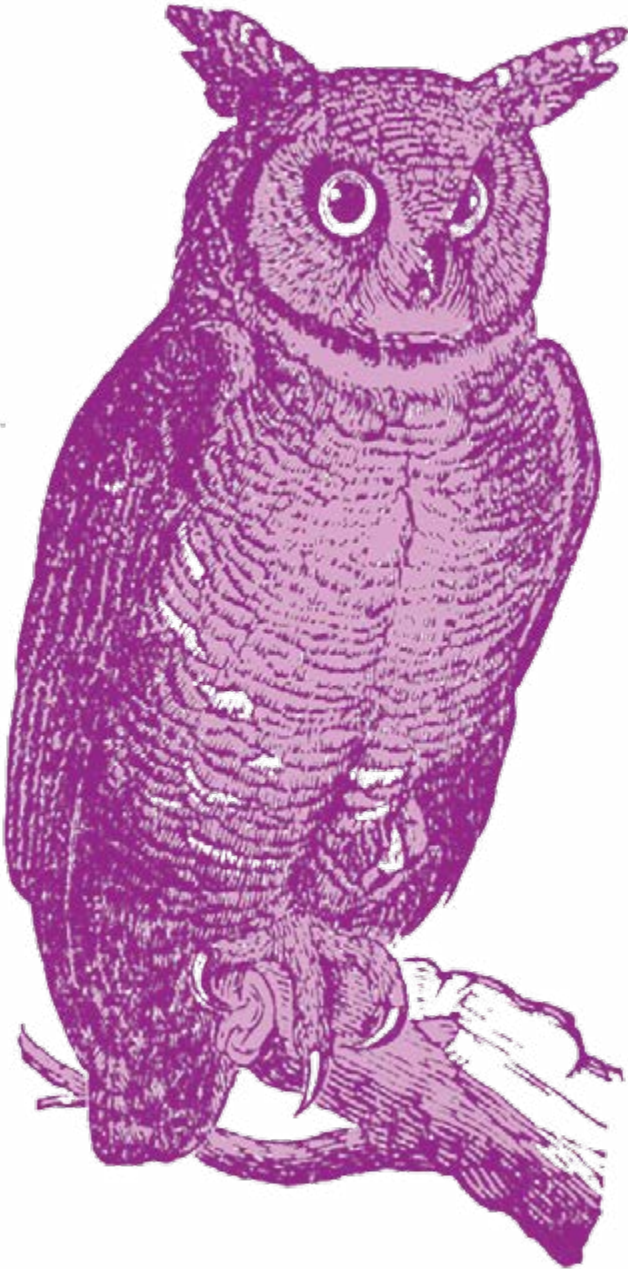


HUDSON MILLS METROPARK
ACTIVITY CENTER



SCHOOL PROGRAMS

GETTING STARTED

Group reservations can be made by calling 734-426-8211 between 8 a.m. and 4 p.m. Tuesday through Saturday, or email Mark Irish at

mark.irish@metroparks.com.

All reservations must be made at least two weeks in advance.

To schedule a program, have the following information ready:

- Date and time you would like to visit
- Number of children
- Activities you would like to schedule
- School address, email address and phone number

COST

IN-PARK

Programs are \$2 per student per hour, \$30 minimum per group.

EDVENTURE

These programs are at your school.

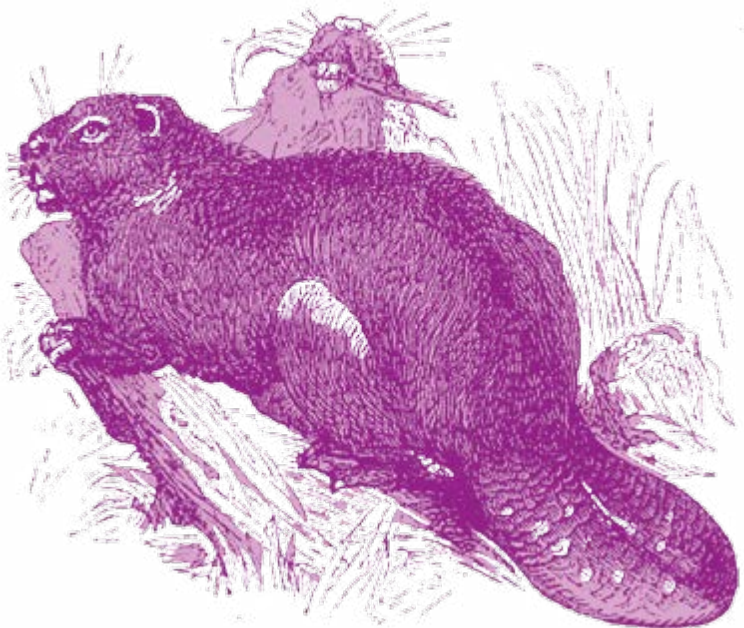
Cost is \$75 for the first program, and \$50 for additional programs the same day. There is a maximum of four programs per day, with 30 students per program.

CONFIRMATION

A confirmation email, chaperone information and a map will be sent after you schedule an appointment.

CONTENT EXPECTATIONS

All programs meet the Michigan Grade Level Content Expectations (GLCE), the Next Generation Science Standards and Common Core standards.



A FIELD TRIP THAT COMES TO YOU!

EDventures are educational programs that can be adapted to your location. Choose any program listed in this brochure for your classroom and/or outside in your special habitat. Listed below are some of the most popular EDventures, but others listed can be adapted for your location. Call for more details.



PLANT PARTS & THEIR CYCLES

Discover the parts of plants and their cycles. Discuss how a flower turns into a seed, seed travel and dress up a student to become a flower. Go on a scavenger hunt around your school searching for plant parts.

OPTIONAL: Decorate a plant cycle T-shirt. Have the students bring a white or light-colored t-shirt.

FOCUS: plant parts & functions · plant life cycles · identify needs of plants

MAPLE'S SWEET HISTORY

Experience the sweet history of maple syrup and discover the natural history of maple trees. Make a pile and taste the sap and pure maple syrup.

FOCUS: plant parts & function · plant needs · how people use the environment

PLANT HEREDITY

Through games, students will explore plant heredity, observable plant characteristics and how these are passed on from parents to young. This is a wonderful follow-up program to "Plant Parts and Their Cycles."

FOCUS: plant heredity · characteristics passed from adult to young

COLORS OF AUTUMN

On a short hike around your school, learn why trees lose their leaves and why leaves change color.

OPTIONAL: Make a leaf print T-shirt. Have students bring a white or light-colored T-shirt.

FOCUS: plant parts · function · identify needs of plants

INCREDIBLE INSECTS

Discover insects and their life cycles, then search for insects outside using nets. Also, observe insects' amazing adaptations for survival.

OPTIONAL: Decorate an insect T-shirt. Have the students bring a white or light-colored t-shirt.

FOCUS: identify basic needs · identify & compare living & non-living things

LEAP INTO SPRING

SPRING · 1½ HOURS

After a long, cold winter, signs of spring are finally here. Singing birds, baby animals and wildflowers will be the focus on this hike. Make a frog life cycle T-shirt. Have the students bring a white T-shirt.

FOCUS: basic needs · life cycles · plants · structures & functions

COLORS OF AUTUMN

FALL · 1½ HOURS

On a short hike, learn why trees lose their leaves and why leaves change color. Make a leaf print T-shirt. Have the students bring a white or light-colored T-shirt.

FOCUS: plant parts & function · identify needs of plants

MAPLE SUGARING

MARCH · 1 HOUR

Experience how maple syrup has been made over the years. We will tap a tree and taste the sap and pure maple syrup. An optional all-you-can-eat pancake and sausage breakfast is available for an additional \$3.50 per student and \$5.50 per adult.

FOCUS: plant parts & function · plant needs · how people use the environment · states of matter

TRACK 'N' TRAIL

WINTER · 1½ HOURS

Become nature detectives and identify animal tracks. Take a short hike to see where animals have been and where they are going. Make an animal track T-shirt. Have the students bring a white or light colored T-shirt.

FOCUS: identify basic needs of animals · structures & functions



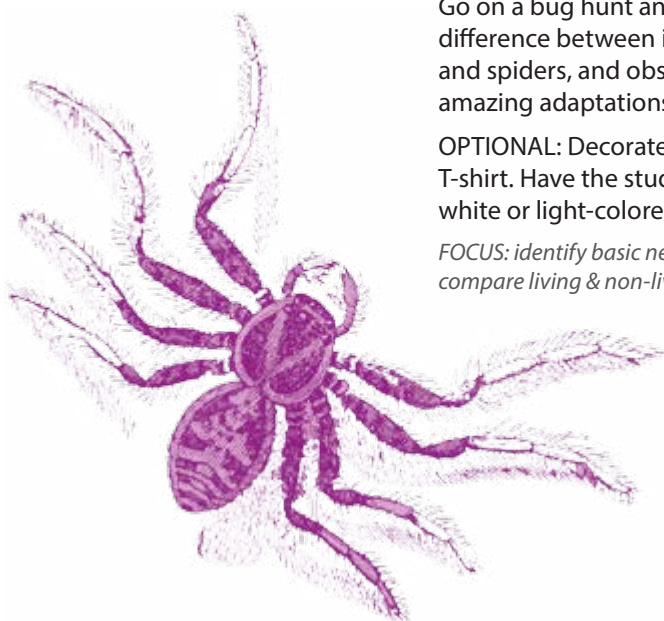
CREEPLY CRAWLIES

FALL & SPRING · 1 – 1½ HOURS

Go on a bug hunt and discover the difference between insects, worms and spiders, and observe their amazing adaptations for survival.

OPTIONAL: Decorate a creepy crawly T-shirt. Have the students bring a white or light-colored t-shirt.

FOCUS: identify basic needs · identify & compare living & non-living things



HUDSON MILLS THROUGH THE SEASONS

SIGNS OF SPRING

SPRING · 1 HOUR

Take a hike to see, hear and smell the signs of spring. Singing birds, baby animals and wildflowers will be the FOCUS, using hands-on objects.

FOCUS: identify basic needs · identify & compare living & non-living things

ANIMALS IN THE SNOW

WINTER · 1 HOUR

During a hike, search for animal footprints up close, then practice walking like an animal. Discover how animals stay warm and where they live.

FOCUS: identify basic needs · identify & compare living & non-living things

ANIMALS PREPARING FOR WINTER

FALL · 1 HOUR

Hibernation, migration, and animals staying awake for the winter will be discussed through a hike, storytelling and hands-on objects.

FOCUS: identify basic needs · identify & compare living & non-living things



WETLAND DISCOVERIES

FALL & SPRING · 1 HOUR

Search for animals in the stream using nets. By exploring the biodiversity, you will understand how this relates to positive and negative effects that humans have caused on the environment.

FOCUS: identify the needs of animals · life cycles · water quality · habitats

PLANT PARTS & THEIR CYCLES

FALL & SPRING · 1 – 1½ HOURS

Discover parts of plants and their cycles. Discuss how a flower turns into a seed, seed travel and dress up a student to become a flower. Go on a scavenger hunt and search for plant parts.

OPTIONAL: Decorate a plant cycle T-shirt. Have the students bring a white or light-colored t-shirt.

FOCUS: plant parts & functions · plant life cycles · identify needs of plants

PLANT HEREDITY

FALL & SPRING · 1 HOUR

Through games, students will explore plant heredity, observable plant characteristics and how these are passed on from parents to young. This is a wonderful follow-up program to "Plant Parts and Their Cycles."

FOCUS: plant heredity · characteristics passed from adult to young



INCREDIBLE INSECTS

FALL & SPRING · 1 – 1½ HOURS

Discover insects and their life cycles, then search for insects outside using nets. Also, observe insects' amazing adaptations for survival.

OPTIONAL: Decorate an insect T-shirt. Have the students bring a white or light-colored t-shirt.

FOCUS: identify basic needs · identify & compare living & non-living things

ANIMAL ADAPTATIONS & STRUCTURES

YEAR-ROUND · 1 HOUR

Explore animal adaptations and structures through a hike in the woods. Learn how animals protect themselves, how they get food and why they look the way they do through hands-on items and a game.

FOCUS: structures & functions · classification · environmental adaptation

LET'S GO FISHING!

SPRING · 1 HOUR

Go fishing using the park's rods and reels. Explore fish as predators and prey in the food chain.

FOCUS: environmental adaptations · food chain · structures & functions · classify animals

SOMETHING FISHY!

SPRING · 1 HOUR

This is a perfect way to discover fish diversity, anatomy and ecology. Using fish replicas, practice the Japanese art of Gyotaku. Have the students bring a white T-shirt.

FOCUS: environmental adaptations · food chain · structures & functions · classify animals



THE FRENCH VOYAGEURS & THE FUR TRADE

YEAR-ROUND · 1 HOUR

Join a French Voyageur to learn about the trade and interactions between the French and the Native American here in Michigan. Through artifacts and replicas, students will experience life at a 1700s era trading post. Michigan history, geography and economics come alive in one program.

FOCUS: Native/European interaction · physical characteristics of Michigan · scarcity · choices · natural resources

ORIENTEERING

YEAR-ROUND · 1½ HOURS

Learn the basics of orienteering. Also, learn how to read a map and compass, then practice your knowledge during a survival game.

FOCUS: magnetic field of the earth · Earth as a magnet · map & compass reading

HURON RIVER ECOSYSTEM

FALL & SPRING · 1½ HOURS

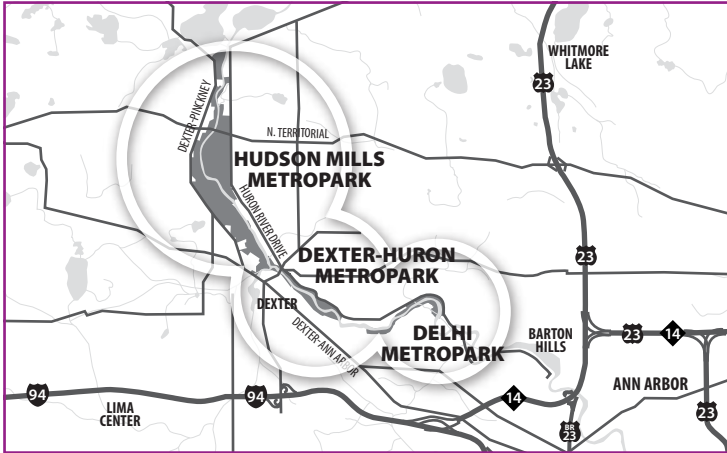
Using nets, collect and identify macro invertebrates from the Huron River watershed. Oxygen content, erosion and water quality will be measured using the flora and fauna living in the water. Students should wear water shoes.

FOCUS: species adaptation & survival · life requirements · food webs · ecological relationships · water quality

HUDSON MILLS METROPARK

P.O. Box 337 · 8801 North Territorial Road · Dexter, MI 48130
734-426-8211

metroparks.com



FROM US-23

Exit 49 for North Territorial Road. Travel west eight miles. The park entrance is on the south side of the road.

FROM I-94

Exit 169 for Zeeb Road. Travel north. Turn west on Dexter-Ann Arbor Road. Travel through the town of Dexter to Dexter-Pinckney Road. Turn north. Turn east onto North Territorial Road. The park entrance is on the south side of the road.