

# Metro Beach Nature Center School Programs



*Teaching children  
about the natural  
world should be  
seen as one of the  
most important  
events in their  
lives."*

Thomas Berry,  
"The Dream of the Earth"



Contact the Nature Center  
for more information:  
(586) 463-4332

## Metro Beach Nature Center School-Age Group Education Programs

Nestled at the end of Metropolitan Parkway, in the heart of suburban Macomb County, Metro Beach Metropark offers visitors access to Lake St. Clair and the surrounding ecosystems. Metro Beach Nature Center hosts programs for school groups, homeschoolers, families, scouts, adult and community groups. Programs are by appointment and are usually offered year-round (unless otherwise noted).

### Program Details:

- ❖ Programs begin as early as 9:30 am and end by 2:30 pm
- ❖ Programs are held weekdays, Tuesday through Friday
- ❖ Programs for preK are one hour and for all other groups are 1 ½ hours in length
- ❖ Programs include time in the display area, an indoor presentation and outdoor guided hike
- ❖ Programs can be held for up to three groups at a time (unless otherwise noted)
- ❖ Minimum: 10 children; Maximum: 35 children per group
- ❖ Program fee is \$1.00 per child; fee changes to \$2.00 per child July 1, 2011.
- ❖ There is no park entry fee for registered school buses; however, there is a \$5.00 per vehicle charge for private cars and chartered buses, unless they have a Metroparks annual pass for that year
- ❖ Program payment can be made by cash, check (made out to HCMA) or charge at time of program; school groups can also be invoiced for program fees
- ❖ Program registration: Call (586) 463-4332

***Make a day of it!*** While at the park, you may also visit our Tot Play Area, Squirt Zone, explore the beach, and use the picnic areas for lunch and other activities.

All programs are led by an interpretive naturalist and are grade-level appropriate with respect to Michigan Grade Level Content Expectations (see \*GLCEs) and program delivery. Programs can be adapted for different grade levels and abilities.

**Special Topics:** If you have a topic that you are interested in, ask the Nature Center staff if it might be possible to have a program. Staff needs at least two weeks advance notice for special programs.

Special interest topics offered on a limited basis: fossils, rocks and minerals, and weather. *Available for only one class at a time.*

**NOTE:** To introduce participants to animals, their features and adaptations, we use taxidermied and other preserved specimens to bring realism and scientific observation into the program. Live animals are also often incorporated into programs.

## Programs Available for All Grade Levels

**Seasonal Programs** (recommended for preK - 2nd)



- ❖ **Signs of the Season** (year-round)  
Learn what to look for, then use your senses and observation skills along the trail
- ❖ **Animals Prepare for Winter** (fall)
- ❖ **Winter Wildlife Survival** (winter)  
Animals have a variety of adaptations and behaviors to survive Michigan's winters. Find out how they do it, then look for signs of animals along the trails

*\*GLCEs: observing the natural world using senses and simple tools, life cycles, needs of living things, adaptations*

### Plant Life

Because they are not able to move, plants have developed an interesting variety of adaptations to survive Michigan's climate and use by animals. People also need plants for a variety of uses.

*\*GLCEs: classification, life cycles, adaptations*

## Programs Available for All Grade Levels

### Animal Groups

Focus on one group of animals (mammals, birds, reptiles and amphibians, fish, or insects) to find out how they are classified and how they survive, thrive and continue from generation to generation. Or, compare and contrast several groups, such as vertebrates and invertebrates.

*\*GLCEs: classification, characteristics life cycles, adaptations*



### Pond Life and Wetlands Wildlife

Many animals spend all or part of their life in and around the water. Learn more about their adaptations and how they interact with one another and their environment.

*\*GLCEs: food webs, adaptations, life cycles, water as a resource, human impact on the environment*

### Habitats are Homes

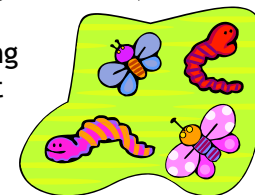
Every living thing needs a few basics - water, food, shelter - and people are no exception! Find out how local area plants and animals obtain what they need, and some of the clever ways that they do it. Then use your new knowledge to find animal homes along the trail.

*\*GLCEs: needs of living things, adaptations, habitats*

### Life Cycles (recommended for mid-April through October)

In spring, the birds are singing (and so are the frogs!), insects are humming, plants are budding and life continues anew. Each animal and plant begins a family in its own way. Later in the year, amphibians and insects are transforming and seeds are dispersing. Find out how they do it, then hike the trails with your senses on the alert!

*\*GLCEs: needs of living things, adaptations, life cycles*



## Recommended for Grades 3 and Up

Voyageur Canoe Programs are offered late April - June and September - October, depending on lake levels and weather conditions. We can accommodate 12 students per canoe appointment, with 6 adult chaperones. **Program fee is \$40.00 per canoe outing; fee changes to \$60.00 per canoe outing starting July 1, 2011** . Personal Flotation Devices and paddles provided.



Choose a program emphasis:

### Paddle Through the Marsh

Take our wetland explorations directly out into the marsh! Paddle our 34-foot voyageur canoe through the North Marsh while we look for wetland wildlife and go dipping.

*\*GLCEs: ecosystems, adaptations, food webs and other, relationships, human impact on the environment*

### French Voyageurs and the Fur Trade

Now calling all prospective voyageurs! Sign up for a “voyage” through the marsh paddling our 34-foot voyageur canoe after you have discovered what life was really like for these intrepid travelers.

*\*GLCEs: Michigan history and the Fur Trade Era*

## Recommended for Grades 4 and Up

### Ecosystems All Around

What is an ecosystem? How are ecosystems different from one another? How do plants and animals in an ecosystem interact? Explore the ecosystems along the trail while we investigate the answers to these questions.

*\*GLCEs: ecosystems, food webs and other relationships, human impact on the environment*



### Predator-Prey Adventure (offered January - March)

In this special program, students play “nature detective” to determine the identity of a mystery animal, meet its nearest relatives, and find out how it survives. We might even see signs of its presence along the nature trails!

*\*GLCEs: populations and food webs, characteristics of animals and identification, using observation skills*



### Wetlands are Wonderful!



Water covers over 2/3 of the Earth, and is essential for all living things. Wetlands are the place where the land meets the water - and the wildlife hangs out! Learn how important this ecosystem is, what animals we often find there and how they interact with one another.

*\*GLCEs: food webs, adaptations, life cycles, water as a resource, human impact on the environment*

This program is also offered in conjunction with Michigan Sea Grant’s Great Lakes Education Program (GLEP). Check it out at: <http://www.miseagrant.umich.edu/glep/>

## Metro Beach Metropark Map and Driving Directions



Metro Beach Metropark is located at 31300 Metropolitan Parkway, Harrison Twp., 48045.

Metropolitan Parkway/Sixteen Mile Road runs east-west through the middle of Macomb County and ends, to the east, at Metro Beach Metropark. The park is accessible off I-94 (see below) and via any connecting route to eastbound Metropolitan Parkway.

**From I-94 eastbound:** Exit #236, Metropolitan Parkway (about 7 miles north of the I-696 interchange). Turn right at light at end of ramp. Go approximately 3 miles east to park entrance.

**From I-94 westbound:** Exit #236, Metropolitan Parkway (about 4 miles south of the M-59 interchange). Turn left at end of ramp. Go approximately 3 miles east to park entrance.

