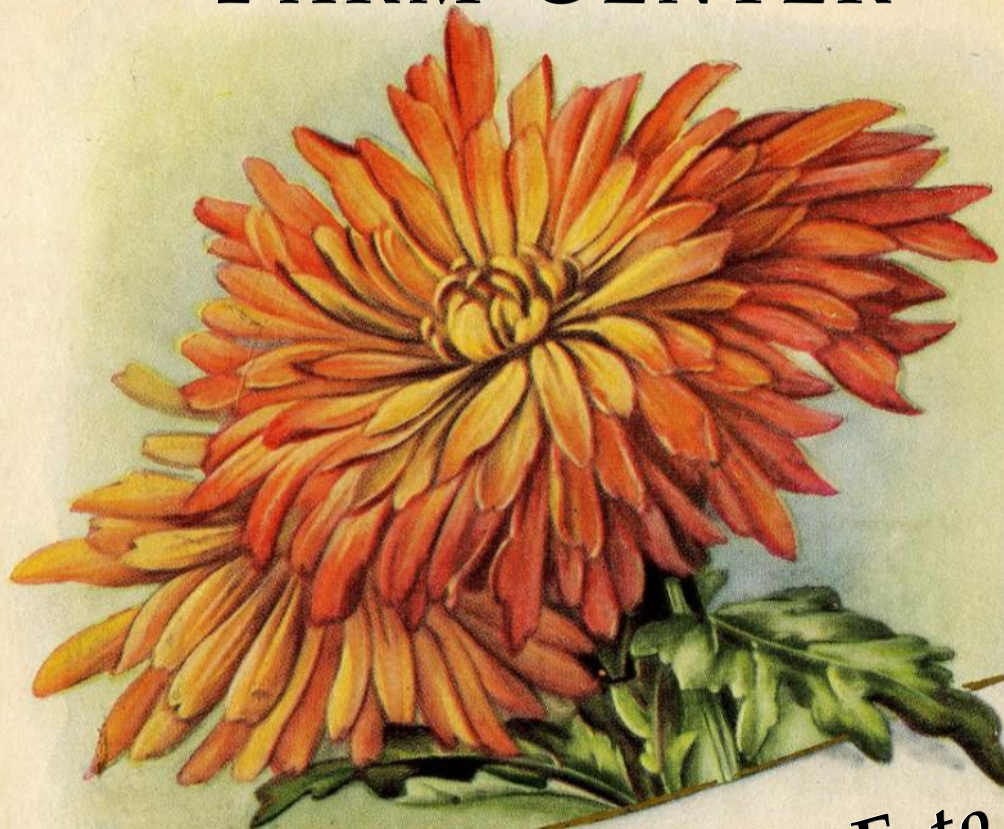


Kensington Metropark
FARM CENTER



**TEACHERS' GUIDE to
FARM PROGRAMS**





Farm Center Hours

March 1st through October 31st

9 am to 6pm *every day*

November 1st through February 29th

9 am to 4 pm *every day*

(A Metroparks vehicle entry pass is required to visit the Farm.)

About the Farm

Meet farm animals and get a glimpse of rural life at Kensington Metropark Farm Center. Take in the sights, smells and sounds of life on the farm and see live farm animals like chickens, sheep, cattle and draft horses. Tour a 150-year old restored barn and poultry house, and take a short walk to the Kids' Cottage, a one-of-a kind "green" building made from trees, rocks, soil and plants found primarily at the park.

An herb garden, field crops and old-fashioned farm equipment are also on display. Special programs are held on the animals, where some foods come from, and other farm-related topics. Weekends in March visitors can visit the sugar shack and observe as maple trees are tapped and the sap is boiled to make maple syrup. Weekends in October the pumpkin patch is open for visitors to select their perfect pumpkin or gourd.

Public hayrides or sleigh rides are offered on weekends and holidays; privately chartered hayrides are also available. Farm tours, Kids' Cottage and maple sugaring programs are available for interested school groups.

The Farmhouse Grille offers sandwiches, soft drinks and other snacks. Located at the farm entrance, the grille is open every day from Memorial Day to Labor Day.



To reach the Farm Center Office, call (248) 684 - 8632



School Programs

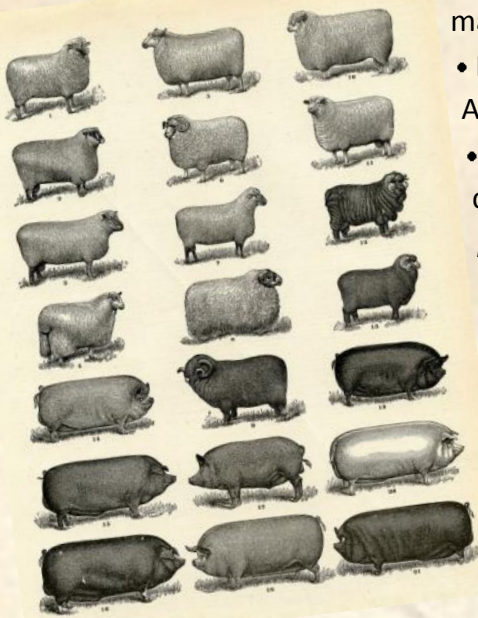
Take your class on a different kind of field trip!

Down on the farm your students will learn as they experience the excitement of meeting a one-ton horse or tiny newborn pig, the wonder of making a sugary treat from the trees, or the magic of a building style learned from the birds. And since you will be visiting a Metropark, why not also schedule a visit with the nature center to add a wild component to your trip? All of this is available at one of the lowest rates around. Call today!



About our Programs

- Each program (Farm Tour, Maple Sugaring, Harvest Adventure and Kids' Cottage Tour) is designed to be fun for the students while meeting a variety of education benchmarks. Please see details on the following pages for info on viewing these benchmarks as well as grade level recommendations.
- NEW for 2012: *Programs are available Monday - Friday from 9am - 2pm.* Not all programs are available year-round. See program descriptions for details.



- Group size requirements are a minimum of 15 and a maximum of 35 per program.
- Please be aware there is a \$2.00 per child fee. (*Harvest Adventure is \$6 per child).
- Busses with municipal plates may enter the park at no charge. (*All other vehicles require a Metroparks entry pass.*)
- **Tours and School Programs are scheduled through the Kensington Nature Center. Please call (248) 685-0603 between 9am and 5pm to schedule.** Appointments must be made at least one week in advance.

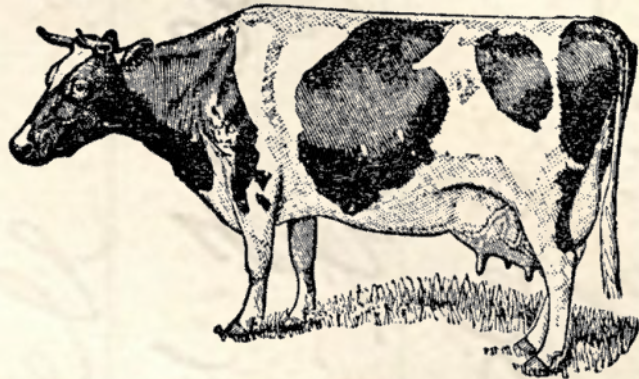


Farm Tour

Available All Year

May be adapted for any grade level, pK and up

Many of our elementary-age children have never set foot on a working farm or know where their food and fiber comes from. This program introduces students to the animals living on the farm and their contributions to society. Students are encouraged to greet the different animals face to face, while they learn about the job that specific animal does on the farm. Students will learn about the basic needs all animals have and also the differences between mammals and birds.



>>> Available in 2012, a complete list of current GLCE's for all the farm's school programs can be viewed at the Education page at www.metroparks.com .<<<

Maple Sugaring

Available in March only

Most appropriate for grades 2 and up

It is believed that the Native Americans were the first people to tap and process maple sap into sugars and syrups. Through this program, students will achieve a higher level of understanding and respect toward the Native American people and the environment. Students will also discover how unique maple sugaring is to this region. This program includes tapping a maple tree, watching the process of turning sap into syrup, and a tour of a Native American sugaring camp.

Make it a true experience and arrange for a pancake breakfast (for an additional charge) at the Farmhouse Grille! Call or email Kensington's catering service, Kosch Catering, to coordinate a meal. (248)608-0690 mark@koschcatering.com





Harvest Adventure

Available September through November only

Most appropriate for grades 2 & up

Have fun while exploring plant life cycles and animal diversity. During this special two hour program, students will take a walk and a wagon ride to observe fall changes on the farm, make a farm print T-shirt*, help turn apples into cider, and enjoy cider and doughnut refreshments. [*Kids must bring their own white or light-colored t-shirt. This program is two hours long and \$6.00 per student]

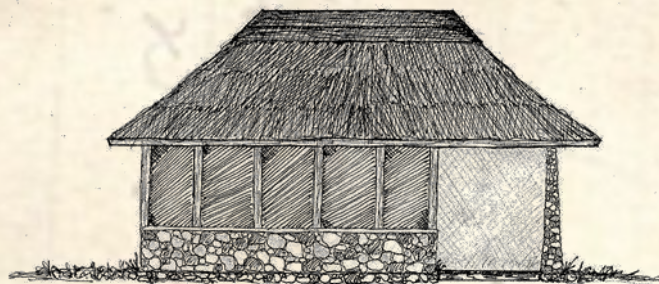
>>> Available in 2012, a complete list of current GLCE's for all the farm's school programs can be viewed at the Education page at www.metroparks.com .<<<

Kids' Cottage Tour

Available All Year

Most appropriate for grades 2 and up

Visit this natural building which was constructed using local materials. The Kids' Cottage features a straw bale wall covered with earthen plaster, compressed earth block and wattle & daub walls, wooden timbers and an authentic thatched roof! Through active teaching and hands-on learning, our curriculum offers students awareness of natural building practices and sustainable agriculture.



About our Animals

Kensington Farm Center is home to many species of domestic animals. Horses, cows, pigs, sheep, goats, chickens, ducks, geese and rabbits are all permanent residents of the farm. You will also notice different body shapes, patterns and colors since there are a variety of breeds represented here too. Brown Swiss or Holstein? Saanen or Alpine? Look for the signs posted around the farm with interesting information and help on recognizing the different breeds.

Babies

Many of our animals live their whole lives at the farm and so you can visit them each time you stop by. But we also welcome new animals every year as many animals are born at Kensington Farm. Though births happen throughout the year, spring is the season when most farm babies are expected. Stop out often to see which newborns or hatchlings have arrived. Many babies have even been born right before our visitors' eyes!

Petting

You don't have to just stand there! Some of our goats and cows really enjoy a good back scratch. As you visit the farm, feel free to pet animals that approach you. We encourage gentle contact with the farm animals and that's what some of them even expect.

Feeding

Our animals at Kensington Farm are on controlled diets. Just like kids, animals thrive when they are fed only nutritious foods and don't get snacks all day. Also, hand-feeding encourages bad habits that we want to avoid. So, we ask that you do not feed the animals.

