

Huron-Clinton

METROPARKSnews

www.metroparks.com • Winter 2011 – 2012

MEET WOLCOTT'S NEW ANIMALS!

WINTER BLISS FESTIVAL

CARDBOARD CLASSIC

VISIT SANTA

INSIDE? OUT!



WINTER'S best bets

In addition to these "Best Bets," see our listings for Santa events.

HERITAGE HOLIDAYS Wolcott Mill Metropark Historic Center

December 2, 3, 9, 10, 16 & 17

Step back to Christmas in 1870, 1900 and 1950, plus see a holiday music light show. Visit Santa in the Mill, and warm up at a bonfire with s'mores.

3RD ANNUAL REI FROSTY FREESTYLE 5/15K RACE

Huron Meadows Metropark
January 14

Ski classic or skate-style in this cross-country ski race held at this Michigan Cup Race Series-sanctioned competition. \$

2ND ANNUAL REI KRAZY KLASSIC CROSS-COUNTRY SKI RACE

Huron Meadows Metropark
January 15

Compete in this multi-lap 12K classic-only Michigan Cup Race Series-sanctioned event. \$

ERIE ICE DAZE

Lake Erie Metropark
January 21 & 22

Celebrate winter with an Ice Age walk, snowsnake competitions and more. Evening skywatch and bonfire held Saturday night.

CHILLIN' AT THE MILLS WINTER FESTIVAL

Hudson Mills Metropark
January 28

Try a variety of winter activities, including cross-country skiing, snow shoeing or Klondike races (activities subject to weather). Advance tickets. \$

ICE HARVESTING

Kensington Metropark Farm Center
January 28 & 29

See ice harvesting demonstrations and discover the importance of ice in times past.

WINTER BLISS FESTIVAL

Kensington Metropark
January 29

Clinics and demos on curling, speed skating, snow shoeing and cross country skiing will be offered. Plus, watch ice harvesting and try ice fishing. \$

35TH ANNUAL PANCAKE WALK Stony Creek Metropark Nature Center

February 5

Take a frosty winter morning walk, and have a piping hot breakfast complete with pancakes, sausage and coffee, tea or milk at the Nature Center. \$

DADDY-DAUGHTER HOEDOWN Kensington Metropark Farm Center

February 11

Dads, grandpas, uncles and friends, bring your favorite gal to this fun square dance! Dave Smith will talk you through the basics. \$

WINTERFEST

Oakwoods Metropark

February 17 & 18

Celebrate winter with cool activities, including snowshoeing, snowsnake throwing and more! \$

LIVE! BIRDS OF PREY

Hudson Mills Metropark
February 18

Meet live hawks, owls, falcons and more from Howell Nature Center. \$

RUM-RUNNING STORIES

Lake Erie Metropark

February 19

Hear local stories and tales from Prohibition days in the Detroit River region. \$

MAPLE SWEETNESS

Wolcott Mill Metropark

February 25 & 26

Learn the basics of making maple syrup, from tree identification and how to tap them, to boiling down the sap into syrup. Dress for the weather as part of the program will be outdoors. \$

JOURNEY TO THE SUGAR BUSH

Hudson Mills Metropark

February 25 & 26

See how to tap trees, collect sap and boil it into maple syrup, then eat a hot pancake breakfast. \$



FROM THE director

Metroparks commissioners and staff, with input from Metroparks stakeholders, have just completed a nine-goal strategic plan that will guide our operations during the next five to 10 years. Some of the goals will be directly apparent to visitors; others are intended to enhance working relationships within the organization and to develop more efficient processes for maintaining the integrity of the Metroparks' infrastructure.

The complete plan is available for your review at www.metroparks.com. Briefly, the nine goals are to:

1. Enhance the marketing effort to increase Metroparks attendance, and knowledge of Metroparks facilities and programs;
2. Improve existing visitors' experiences and create new opportunities for visitors, with an emphasis on reaching out to underserved populations;
3. Develop plans to more efficiently maintain the quality of the Metroparks and protect their resources;
4. Ensure that the Metroparks remain visionary, continuing to provide outdoor recreation and education that is enjoyable, safe, fun and accessible to a large and diverse population at reasonable cost;
5. Develop an internal culture that values creativity, builds collaborative relationships through all levels of the organization and embraces an attitude of continuous quality improvement;
6. Look for new and creative ways of increasing and diversifying funding;
7. Continue to conserve, enhance and protect significant elements of natural diversity, promote active stewardship and encourage environmental sustainability;
8. Give visitors educational experiences that tell the stories that define our region both in terms of its cultural and natural history;
9. Define the scope of programming offered in the Metroparks and develop processes for evaluating that programming.

Actions and tasks, along with timelines for completing them, have been identified to accomplish each of these goals. We are confident that working to achieve these goals will enhance your experiences in the Metroparks, keep the system on a sound financial foundation, and keep the Metroparks a meaningful, relevant component of the region's quality of life.

David C. Robinson

CARDBOARD classic

Build a homemade sled out of cardboard, glue, paint, and duct tape or masking tape, and then bring it to race down a sledding hill in this fun competition! The more unique and creative the sled, the better! This event will be held in February. The date and park will be posted at www.metroparks.com.



Chillin' at the Mills Winter Festival, Hudson Mills Metropark

Once the cold weather hits, don't stop moving! Colder temps and snow shouldn't mean hibernation for you and your family. There are all kinds of activities to try that not only keep away the winter blues but also offer new fun and exciting ways to utilize the Metroparks and all that they have to offer! So, take advantage of our winter-friendly facilities and events that make it easy to enjoy the outdoors while getting some exercise, too!

Here are our top picks to get started:

The Metroparks plow part, if not all, of their paved hike-bike trails throughout the winter, so you can walk, jog or bike ride once the snow is cleared. If quiet walks are more your interest, don snow shoes or hiking boots to make use of the many foot trails which are open year-round at the parks as well.

If you're not sure which winter activities may be for you, stop in at one of our cold-weather festivals where you can try your hand at everything from snowshoeing to curling. Kensington Metropark will host its first "Winter Bliss Festival" on January 29 with clinics on cross-country skiing, speedskating, snowshoeing, ice fishing, curling and more. In addition, ice harvesting demos at the farm will put a historical twist on the day.

"Chillin' at the Mills Winter Festival" at Hudson Mills Metropark on January 28 gives kids the chance to try snowshoeing, pull a dog sled in the Klondike races and watch dog sled demonstrations. REI will have its winter campsite set up, where you can learn about some winter survival techniques, how to build a shelter and make your very own snow sculpture.

Oakwoods Metropark's new "Winterfest," on February 17 and 18, will take a quieter approach to the winter season by offering guided winter walks to search for birds and enjoy the peaceful serenity of the snow dusted woods. Snowshoeing clinics will be offered and present an entirely new way of traversing the park's trails. An outdoor bonfire Friday night and snowsnake throwing will also be part of the festivities.

For details on these events and activities, including fees and registration information, please visit www.metroparks.com or call the park direct. Please remember that all activities are subject to change, depending on snow and weather conditions. All parks are open every day, but some facilities may be open as snow and ice conditions permit. It's always best to call before you depart to check on park facilities and conditions. Make the Metroparks your winter playground!

	CROSS-COUNTRY SKI TRAILS	SKI CENTER W/RENTALS*	SNOWSHOE RENTAL	SLEDDING	SNOWBOARDING	TOBOGGANING	ICE SKATING	ICE FISHING	HIKING TRAILS
HUDSON MILLS	❄️	❄️							❄️
HURON MEADOWS	❄️	❄️						❄️	❄️
INDIAN SPRINGS	❄️			❄️					❄️
KENSINGTON	❄️	❄️ ^F		❄️	❄️	❄️	❄️ ^L	❄️	❄️
LAKE ERIE	❄️			❄️				❄️	❄️
LOWER HURON							❄️ ^L		❄️
METRO BEACH	❄️						❄️	❄️	❄️
OAKWOODS	❄️		❄️ ^N						❄️
STONY CREEK	❄️	❄️	❄️ ^N	❄️	❄️	❄️	❄️	❄️	❄️
WILLOW	❄️	❄️		❄️ ^L		❄️		❄️	❄️
WOLCOTT MILL									❄️

*Ski rentals available weekends only ^LLighted facilities ^FFarm center ^NNature center



A miniature tale



Wolcott Mill Farm Center features a variety of farm animals, from tiny chicks to six breeds of dairy cows. Visitors and school groups have always been enamored by the beauty and sheer size of the farm's gentle giants, three Percheron draft horses that call Wolcott their home. Although these equines represent some of the biggest of their species, two new residents bring a diminutive perspective to the farm.

Not all equines are seven feet tall and weigh 2,000 pounds, and it is that diversity that the Farm Center is striving to convey by introducing its two newest residents, Cramer, a 13-year old miniature horse and Baron, a 4-year old miniature donkey.

Far more compact than the Percherons, each weighing a modest 200 pounds, Cramer and Baron are perfect for interpretive programs, especially those involving young children, who may be intimidated by the massive work horses. In addition, children can be at eye level with the two animals. With their approachable and gentle demeanors, the two minis are sure to capture the hearts of all who pay them a visit.

GET READY for 2012

Metroparks 2012 annual permits make great Christmas gifts for anyone on your list. Order yours online today at www.metroparks.com

METROPARKS 2012 VEHICLE ENTRY FEES:



Annual \$25 regular, \$15 senior (62 and older)
Daily \$5

BOAT LAUNCHING FEES:

Annual \$30 regular, \$15 senior (62 and older)
Daily \$5

A discount is available to businesses and government units purchasing quantities of 50 or more permits. Call 1-800-47-PARKS for details.

METROPARKS/OAKLAND COUNTY PARKS PASS



A \$48 annual motor vehicle entry permit allows entry into eight Oakland County Parks and all 13 Metroparks. Passes are available at the Metroparks Administrative Office and Indian Springs, Kensington and Stony Creek Metroparks, and also available at six Oakland County Parks locations. Call the Metroparks at 1-800-47-PARKS.

GIFT CARDS

Metroparks gift cards make perfect gifts for the holidays! Gift cards can be redeemed for golf fees, annual permits, picnic shelter rentals, marina fees, and more, and can be purchased online at www.metroparks.com or at any park office or the Metroparks Administrative Office in Brighton.





FROSTY RACE to the finish

Grab your skis and head to Huron Meadows Metropark for the Third Annual REI Frosty 5/15K Freestyle Cross-Country Ski Race on Saturday, January 14 and the Second Annual REI Invitational "Krazy Klassic" Cross-Country Ski Race on Sunday, January 15. They are the only Michigan Cup Race Series-sanctioned races held south of Higgins Lake.

Last year, 220 skiers competed in the Frosty Freestyle, the third largest competition in the Lower Peninsula. Although most skiers will ski skate-style, both skate and classic (traditional) ski techniques are allowed. The smaller, more technical Krazy Klassic is a 12K classic-only race over a multi-lap course.

New this year, the Frosty Freestyle will feature shorter races for kids under 12. Classes leading up to the races will be offered for both kids and adults.

The races are open to anyone, from experienced racers to skiers who want to try their first race. The Frosty race is also a great warm-up for the White Pine Stampede and North American Vasa races in February.

Come out to compete or to watch these exciting races!

Proceeds from the races will be donated to the Huron-Clinton Metroparks for cross-country skiing-related expenses. Last year, \$3,217 was donated to buy ski-related equipment.

For more information and to register, go to www.nordicskiracer.com/frosty or call 248-535-9351.

Huron Meadows Metropark is located off US-23, exit 55. 8765 Hammel Road, Brighton, MI 48116, 810-231-4084.

REMEMBER, IT'S NOT JUST toxic to you

Carefully store and dispose of household cleaners, chemicals and oil.

Did you know that many household products are dangerous to our kids, pets and the environment?

Disposal is the key. Never dump motor oil, chemicals and other toxic materials down storm drains, sinks or on the ground. Contact your local community for disposal locations, guidelines and dates.

Find out more at www.semco.org

The Metroparks storm water management plan is available for review at www.metroparks.com. Questions and comments may be addressed to Michael Arens, chief of engineering.

GET connected

IN YOUR INBOX

Join our email list to receive updates on parks and activities. Sign up at www.metroparks.com. *Addresses are not shared with third parties.*

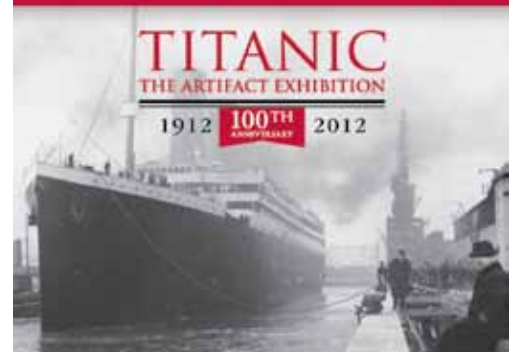


ON FACEBOOK & TWITTER

"Like" Huron-Clinton Metroparks on Facebook and follow @MIMetroparks on Twitter. Share your photos, get updates and see what's happening!



Reserve your tickets today!



March 31-September 30, 2012
Henry Ford Museum®

To reserve tickets, call 313.982.6001 or visit TitanicDetroit.com.





NATURE NOTE: winter discoveries

Winter is a season of hiding. Snow blankets the earth, covering what was once green and growing. Many birds, reptiles and other animals seem to disappear, heading for warmer climates or subterranean hideouts to escape the cold. Even our human neighbors retreat into their homes. When they brave the sidewalks and trails, all we see are reddish cheeks and noses poking out from beneath Thinsulate, wool and down.

But head outside with eyes open in winter and see how much is actually revealed! Travel down your favorite Metropark trail, especially after a gentle snowfall, and keep a lookout for small, white-capped cradles of sticks nestled in shrubs and trees. I'm always amazed by how many bird nests you can find once the leaves fall, and by how many of them are right next to the trails we've walked on dozens of times. But don't just pass them by. Investigate these wonders and you might find bits of lichen, moss, colorful yarn, unidentified string, or even weird chunks of plastic wrapper woven into the nest.

Winter uncovers more than just hidden nests. In a landscape of white, splashes of color seem all the more brilliant. Look for winter berries, but look fast! These colorful, energy-rich bundles of food disappear quickly, and the ones that linger tend to be full of waxes and other hard-to-digest stuff. But follow the winter berries into swampy lowlands and you

might spy some other hidden winter guests – robins, overwintering right here in Michigan and feeding on these fruits! On one of my favorite midwinter robin hunts I never found my intended prey, but I discovered a pileated woodpecker feasting on the berries of poison sumac, scarfing down the milky white globes with abandon.

A fine layer of winter snow reveals the hidden lay of the land itself. When a new blanket of white smoothes out the distraction of leaf litter and fallen branches, I love to let my eyes scan wide and see the hidden gulleys and swales of the land. Small tributaries and feeder streams of the Huron and Clinton rivers flow through our parks, and it's during winter that these icy ribbons of water appear most clearly, rimmed in sparkling crystals above their steady flow. They connect all of our parks, and are just one more wonder to discover in the winter landscape.

– Justin Smith, Interpreter,
Indian Springs Metropark

WE'D LOVE to talk!

Call the Metroparks Community Relations Office at 810-494-6019 to schedule a speaker to come out to your next meeting. We have several presentations available, which, along with a park staff person, can provide a fun and informative talk to your group.



Featuring the premiere show of hundreds of new 2012 and new non-current model boats, motors, trailers, accessories and services. Special attractions, discount tickets and more information to be announced on www.detroitboatshow.net.

MEET OUR park operations managers



Jerry Cyr
Hudson Mills, Huron Meadows, Dexter-Huron & Delhi Metroparks



Gary Hopp
Stony Creek & Wolcott Mill Metroparks



Tonja Jolly
Lake Erie Metropark



Thomas Knuth
Metro Beach Metropark



Jeffrey Linn
Kensington & Indian Springs Metroparks



Jeffrey Schuman
Lower Huron, Willow & Oakwoods Metroparks



Children's play area dedication – Commissioners **John E. LaBelle** (l) and **Anthony V. Marrocco** (r) cut the ribbon to the new Children's Play Area at Lake Erie Metropark in July, 2011, with Metroparks staff and elected officials.



9/11 award – Navy Operational Support Center Detroit sailors stand with Huron-Clinton Metroparks staff following ceremonies during which the Metroparks and staff received awards in appreciation for events that honored first responders and the military on the 10th anniversary of the September 11, 2001 terrorist attacks.

GRANTS, PARTNERSHIPS aid parks



ENVIRONMENTAL AID

The REI Foundation awarded a \$9,278 grant to support stewardship, education, volunteer and natural resource efforts at the Metroparks. REI stores and staff in Ann Arbor, Northville and Troy have supported environmental and recreational activities at the Metroparks and funded water quality and educational efforts during the past four years.

PARKING LOT UPGRADE

The U.S. Environmental Protection Agency (EPA), under their Great Lakes Restoration Initiative, awarded a \$1 million grant to the Metroparks, which along with a \$650,000 contribution in matching funds and services, will redesign and redevelop approximately one-third of the main parking lot at Metro Beach Metropark. The redeveloped area will include an environmentally-friendly design with more vegetative areas and reduced pavement area. It will also divert stormwater away from the Black Creek and into adjacent coastal marshlands for improved water quality.

FIELD TRIP FUNDING

Thanks to the No Child Left Inside initiative, the Four County Community Foundation awarded a \$10,000 grant to Wolcott Mill Metropark for school classes to visit the interpretive facilities.

WETLANDS IMPROVEMENT

The Michigan Chapter of The Nature Conservancy, through a grant from the U.S. EPA, will use a variety of management practices, including herbicide applications, prescribed burns and mowing, to remove or control phragmites, a non-native invasive wetland plant on 1,200 acres of coastal wetlands within the western Lake Erie Basin. As a partner with the Detroit River-Western Lake Erie Cooperative Weed Management Area (CWMA) and a member of the Detroit River International Wildlife Refuge, 400 acres of valuable coastal wetlands at Lake Erie Metropark will be included in this management activity.



VOLUNTEERS help parks

Volunteers pulling garlic mustard

VOLUNTEER STATISTICS

As of October 1, 2011, a total of 125 volunteers worked among 17 volunteer workdays in seven parks. Together, they contributed 676 hours of work, collecting more than 4,000 pounds of garlic mustard and clearing more than 25 acres of invasive shrubs such as autumn olive, buckthorn and honeysuckle.

Volunteers were out in full force this year to protect natural areas at the Metroparks! In spring and early summer, dedicated workers removed more than 4,000 pounds of garlic mustard from woodland and prairie habitats. Through the heat of summer and into the fall, volunteers cleared invasive shrubs, including autumn olive, buckthorn, and honeysuckle from dozens of acres of land.

The coming of winter does not mean the end of stewardship activities at the Metroparks. There is plenty of work left to be done and we need your help, even in cold weather, to protect our natural areas. Volunteer workdays are currently being organized to help remove invasive trees and shrubs. Besides meeting new people and getting the opportunity to spend some time outdoors, volunteers will learn about encouraging native vegetation, controlling invasive species, and managing ecosystems.

WHY LEND A HAND?

In many areas of the Metroparks, invasive plants are taking over and using up the resources that native plant species need to grow. For example, phragmites and purple loosestrife are degrading wetland areas. Shrubs like autumn olive and glossy buckthorn are spreading rapidly through woodlands where native treasures such as trillium and goldenseal are striving to flourish. Forest floors are developing a carpet of garlic mustard that, if left unattended, will destroy diversity in the area. Because these plants were introduced from Europe and Asia, there are no native organisms to keep them under control. We rely heavily on our dedicated volunteers to put forth the effort to control the spread of these plants before our natural areas are compromised.

COLD WEATHER SHRUB CUTTING

Winter is a perfect time of year to control invasives by cutting shrubs. The absence of foliage on stems and branches makes it easier to cut and haul brush away. Also, the plants readily take in the applied herbicide, so the work is very effective. Working into the winter will allow us to push invasives further back, giving us a huge head-start on next year's work!

The Metroparks Natural Resources Department sincerely appreciates the hard work and dedication of all the volunteers who have worked with us this year. We also appreciate the generous support of REI, which makes our workdays possible. For more information on how to get involved, please check the events calendar on the Metroparks website (www.metroparks.com) or contact Becky Gajewski at becky.gajewski@metroparks.com, Allison Esper at allison.esper@metroparks.com, or call the Natural Resources Department at (810) 227-2757.



Pancake Walk, Stony Creek Metropark

**KENSINGTON METROPARK
PARK EVENTS**
near Milford/Brighton
800-477-3178 or 248-685-1561
Please preregister for programs

JANUARY

29 Winter Bliss Festival \$

**KENSINGTON METROPARK
NATURE CENTER**
near Milford/Brighton
248-685-0603
Please preregister for programs

DECEMBER

- 3 Jr. Girl Scouts – Sky Search, 10 am & 2 pm \$
- 4 Brownies – Science in Action, 2 pm \$
- 10 Winter Wildlife Survival, 1 pm \$
- 11 Winter Nature Detectives for Children, 2 pm \$
- 17 Reptiles in the Lobby, 1 pm – 3 pm
- 18 Winter Walkabout, 2 pm \$
- 27 Chickadee Chow-Down, 2 pm \$
- 28 Meet a Bird of Prey, 2 pm \$
- 29, 30 Chickadee Chow-Down, 2 pm \$

JANUARY

- 7 New Year's Bird Count, 8 am
- 8 Animal Tracks on T-shirts, 2 pm \$
- 14 Bear Scouts – Sharing Your World with Wildlife, 10 am & 2 pm \$
- 15 Winter Wildlife Walk, 2 pm \$
- 21 Ice Fishing for Beginners, 1 pm – 4 pm \$
- 22 Snowshoe Stroll, 2 pm \$
- 28 Ice Fishing for Beginners, 1 pm – 4 pm \$

FEBRUARY

- 4 Ice Fishing for Beginners, 1 pm – 4 pm \$
- 5 Chickadee Chow-Down, 2 pm \$
- 11 Ice Fishing for Beginners, 1 pm – 4 pm \$
- 12 Chickadee Chow-Down, 2 pm \$
- 18 Jr. Girl Scouts – Frosty Fun, 10 am & 2 pm \$
- 19 Great Backyard Bird Count, 1 pm – 4 pm

**KENSINGTON METROPARK
FARM CENTER**
near Milford/Brighton
248-684-8632
** Please preregister for programs*



sleigh rides or hayrides

Kensington Farm Center
Every Weekend, Noon – 4 pm, \$
Weather Permitting

DECEMBER

- 10, 11 Snacks with Santa, by appointment \$***
- 28 Farmer for a Day, 10 am – 3 pm, 7-15 yr. olds \$*

JANUARY

28, 29 Ice Harvesting, 1 pm – 3 pm

FEBRUARY

11 Daddy-Daughter Hoedown, 7 pm \$*

**HURON MEADOWS METROPARK
PARK EVENTS**
near Brighton
810-231-4084

JANUARY

- 14 3rd Annual REI Frosty Freestyle 5/15K Ski Race \$**
- 15 REI Krazy Klassic Ski Race \$**

**HUDSON MILLS METROPARK
INTERPRETIVE PROGRAMS**
near Dexter/Ann Arbor
734-426-8211
Please preregister for programs

DECEMBER

- 3 Bird Hike, 8 am \$
- 11 Santa Central, 10 am, 12:30 pm & 2:30 pm \$**

JANUARY

- 7 Bird Hike, 8 am \$
- 21 Animal Tracks & Trails, 11 am \$
- 28 Chillin' at the Mills Winter Festival, 11 am – 2 pm \$**

FEBRUARY

- 4 Bird Hike, 8 am \$
- 5 Animals in the Snow, 1 pm \$
- 11 Michigan Mammals, 1 pm \$
- 18 LIVE! Birds of Prey, 11 am \$**
- 25, 26 Journey to the Sugar Bush, 10 am, 11 am & noon \$**
- 25, 26 All-You Can Eat Pancake Breakfast, 9 am – 2 pm \$

COMING SOON: maple sugaring

March is maple sugar time, and maple sugaring programs will be held at Hudson Mills, Indian Springs, Kensington, Willow and Wolcott Mill Metroparks. The maple sugaring programs at Hudson Mills and Kensington include an optional pancake breakfast.

School group appointments are available Monday through Friday at Kensington Metropark Farm Center, Wednesday through Friday at Hudson Mills and Indian Springs Metroparks, and Thursday and Friday at Wolcott Mill Metropark Historic Center.

WINTER calendar

See event and program details at www.metroparks.com

SANTA'S coming!

**Advance ticket sales.*

AN EVENING WITH SANTA Wolcott Mill Metropark Farm Center December 2

Enjoy a fun meal with dessert, plus visit Santa and make a craft. \$ *

SANTA'S WORKSHOP Lake Erie Metropark December 2 & 3

Visit Santa, have a snack, play reindeer games and take a hayride. \$ *

HERITAGE HOLIDAYS Wolcott Mill Metropark Historic Center December 2, 3, 9, 10, 16 & 17

Step back to Christmas in 1870, 1900 and 1950, plus see a holiday music/light show. Visit Santa in the Mill, and warm up at a bonfire with s'mores.

LUNCH WITH SANTA & MRS. CLAUS Metro Beach Metropark December 3

Visit Santa and Mrs. Claus, have fun with Rosco the Clown, make a craft and enjoy lunch. \$ *

LUNCH WITH SANTA Wolcott Mill Metropark Farm Center December 3 & 4

Join Santa for lunch and a hayride, then make a craft and sing holiday songs. \$ *

SNACKS WITH SANTA Indian Springs Metropark Environmental Discovery Center December 10

Decorate a cookie, listen to a story, make a craft and visit with Santa! \$ *

LUNCH WITH SANTA Stony Creek Metropark Nature Center December 10 & 11

Visit Santa, sing songs, make a holiday craft and have lunch. \$ *

SNACKS WITH SANTA Kensington Metropark Farm Center December 10 & 11

Take a horse-drawn hayride, sing holiday songs, visit with Santa and have a snack. \$ *

SUNDAY WITH SANTA Oakwoods Metropark Nature Center December 11

Visit Santa, play games, make crafts and listen to the story "The Night Before Christmas." Refreshments. \$ *

SANTA CENTRAL Hudson Mills Metropark December 11

Play reindeer games, take a hayride, visit Santa and have a snack. Free photo with Santa with every new toy brought in for Toys for Tots. \$ *

LAKE ERIE METROPARK MARSHLANDS MUSEUM & NATURE CENTER

in Brownstown
734-379-5020

Please preregister for programs

DECEMBER

- 2 Santa's Workshop, 6 pm & 7 pm \$
- 3 Santa's Workshop, 10 am, 11 am, 1 pm, 2 pm \$
- 4 December Do-Day: Natural Ornaments, 2 pm \$
- 10 Crack O' Dawn Coffee Club, 8 am, donation
- 11 December Day Nature Walk, 2 pm \$
- 17 Muskrat Club – Evergreen Scene, 10:30 am, 5-12 yr. olds \$
- 18 A Natural History of Christmas, 2 pm \$

JANUARY

- 7 Crack O' Dawn Coffee Club, 8 am, donation
- 8 Make it at the Marsh – Snowsnakes, 2 pm \$
- 14 Muskrat Club – No Lack of Tracks, 10:30 am, 5-12 yr. olds \$
- 15 Eagles on Ice, 2 pm \$



21, 22 Erie Ice Daze, 10 am – 5 pm

- 21 Staring at the Stars Bonfire, 6 pm – 9 pm
- 22 Ice Fishing for Beginners, 2 pm, for ages 5 yrs. & older \$
- 28 Frigid Fowl: Detroit River Birding, 9:30 am \$
- 29 The Lure of Fish Decoys, 2 pm \$

FEBRUARY

- 4 Crack O' Dawn Coffee Club, 8 am, donation
- 4 Show 'n' Tell for Preschoolers: Fur & Feathers, 10:30 am \$
- 5 Drawn to the Marsh: Intro to Nature Drawing, 2 pm \$
- 11 Jr. Girl Scouts – Frosty Fun, 10 am & 1 pm \$
- 12 Liars' Club – Old Stuff Viewed Newly, 2 pm \$
- 18 Brownies – Listening to the Past, 10 am & 1 pm \$
- 19 Rum-Running Stories, 2 pm \$
- 25 Muskrat Club – "F" is for February, 10:30 am, 5-12 yr. olds \$
- 26 Our Mink Link, 2 pm \$

OAKWOODS METROPARK NATURE CENTER

near Flat Rock
734-782-3956

Please preregister for programs

DECEMBER

- 2 Owl Prowl, 6 pm \$
- 3 Tadpoles, 10 am, 2-5 yr. olds \$
- 3 Explorer's Club, 10 am, 8-12 yr. olds \$
- 3 Owl Prowl, 6 pm \$
- 9 Full Moon Bonfire, 6 pm \$
- 10 Winter Bird Walk, 10 am \$
- 11 Sunday with Santa, 11 am, 12:30 pm & 2 pm \$
- 13 Homeschool Tuesday, 10 am \$
- 17 Christmas for the Critters, 10 am \$
- 17 Do It Yourself: Snowglobes, 1 pm \$
- 24 T'was the Day Before Christmas, 10 am \$

JANUARY

- 7 Tadpoles, 10 am, 2-5 yr. olds \$
- 7 Explorer's Club, 10 am, 8-12 yr. olds \$
- 7 Watching for Woodpeckers, 1 pm \$
- 7 Winter Hike & Bonfire, 6 pm \$
- 10 Homeschool Tuesday, 10 am \$
- 14 Winter Scavenger Hunt, 10 am \$
- 14 Dreamcatcher Workshop, 1 pm \$
- 21 For the Love of a Hawk, 10 am \$
- 21 Animal Tracking, 2 pm \$
- 28 Winter Wilderness Survival, 10 am \$
- 28 Winter Hike & Bonfire, 6 pm \$

FEBRUARY

- 4 Tadpoles, 10 am, 2-5 yr. olds \$
- 4 Explorer's Club, 10 am, 8-12 yr. olds \$
- 4 Michigan's Marsupial, 1 pm \$
- 11 Blacksmithing on the Cheap, 10 am \$
- 11 Winter Bird Hike, 1 pm \$
- 14 Homeschool Tuesday, 10 am \$
- 17 Winterfest, 6 pm \$
- 18 Winterfest, 10 am - 4 pm \$
- 25 In Search of the Early Bird, 8 am \$
- 25 Ice Fishing @ Washago Pond, Willow Metropark, 10 am \$

APPRECIATION days

Take advantage of free park entry and boat launching on:

CHRISTMAS DAY
Sunday, December 25

WINTER calendar

See event and program details at www.metroparks.com

INDIAN SPRINGS METROPARK ENVIRONMENTAL DISCOVERY CENTER near White Lake 248-625-7280

Please preregister for programs

DECEMBER

- 3 Tot Time – Winter Wonderland, 10 am \$
- 10 Snacks with Santa, 10 am & 1 pm \$
- 18 Uncovering the Invisible Hike, 1 pm \$

JANUARY

- 7 Tot Time – Animals in Winter, 10 am \$
- 8 Make-n-Take Animal Stamps, 1 pm \$
- 14 Everything You Need to “Snow,” 1 pm \$
- 21 Girl Scouts – Space, 10 am & 1 pm \$
- 22 Webelos & Bear Scouts – Space, 10 am & 1 pm \$
- 28 Jr. Girl Scouts – Wildlife, 10 am & 1 pm \$
- 29 Tracking Winter Wildlife, 1 pm \$

FEBRUARY

- 4 Tot Time – “Bearly” Yours, 10 am \$
- 4 Owls by Moonlight, 6 pm \$
- 5 Fun Science Experiments, 1 pm \$
- 11 Science of Sledding, 1 pm \$
- 12 Snowshoe Hike, 1 pm \$
- 18, 19 Webelos – Scientist, 10 am & 1 pm \$
- 25 Labtabulous Science, 10 am & 1 pm \$
- 26 Webelos & Bear Scouts – Indian Lore, 10 am & 1 pm \$

STONY CREEK METROPARK NATURE CENTER

near Rochester/Washington Township
586-781-9113

Please preregister for programs

DECEMBER

- 10 Lunch with Santa, 11 am & 1 pm \$
- 11 Lunch with Santa, 1 pm \$

JANUARY

- 29 Brownies – Animals, 2 pm - 3:30 pm \$

FEBRUARY



35TH ANNUAL
pancake
walk

February 5
call for times, \$

5 35th Annual Pancake Walk, call for times \$

- 11 Jr. Girl Scouts – Frosty Fun, 11 am – 1 pm & 2 pm – 4 pm \$
- 12 Brownies – Science in Action, 2 pm – 3:30 pm \$

WOLCOTT MILL METROPARK FARM CENTER near Ray Township 586-752-5932

Please preregister for programs

DECEMBER

- 2 An Evening with Santa, 6 pm \$
- 3, 4 Lunch with Santa, 11 am & 1 pm \$

JANUARY

- 14, 15 Family Farm Chores, 9 am & 3 pm \$
- 18 Fun on the Farm – Rabbits, 10 am & 1 pm \$
- 21 Fun on the Farm – Horses, 10 am & 1 pm \$
- 25 Fun on the Farm – Cows & Calves, 10 am & 1 pm \$
- 28 Family Farm Tour, 10 am & 1 pm \$
- 31 Fun on the Farm – Chickens (part I) 10 am & 1 pm \$

FEBRUARY

- 2 Fun on the Farm – Sheep & Goats, 10 am & 1 pm \$
- 4, 5 Family Farm Chores, 9 am & 3 pm \$
- 11 Fun Farm Craft – Valentine’s Day, 10 am & 1 pm \$
- 23 Fun on the Farm – Chickens (part II) 10 am & 1 pm \$
- 25 Family Farm Tour, 10 am & 1 pm \$

WOLCOTT MILL METROPARK HISTORIC CENTER

in Ray Township
586-749-5997

Please preregister for programs

DECEMBER

- 2, 3 Heritage Holidays, 6 pm – 8 pm, donation
- 9, 10 Heritage Holidays, 6 pm – 8 pm, donation
- 16, 17 Heritage Holidays, 6 pm – 8 pm, donation

JANUARY

- 21 Brownies – Movers, 10 am & 1 pm \$

FEBRUARY

- 4 Brownies – Sounds of Music, 10 am & 1 pm \$
- 11 Brownies – Colors & Shapes, 10 am & 1 pm \$
- 25, 26 Maple Sweetness, 12:30 pm & 3 pm \$

METRO BEACH METROPARK NATURE CENTER near Mount Clemens 586-463-4332

Please preregister for programs

DECEMBER



LUNCH WITH SANTA
& Mrs. Claus

December 3
11 am – 2 pm, \$

3 Lunch with Santa & Mrs. Claus, 11 am – 2 pm \$

- 4 Birds at the Feeder, noon – 3 pm, donations welcome
- 11 Nature Christmas Ornaments, 1 pm \$
- 18 Explore Nature in Winter, 1 pm \$

JANUARY

- 7 Explore Nature in Winter with Your Family, 1 pm \$
- 8 Meet the Nature Center Animals, 1 pm \$
- 15 Preschool Nature Club – Animals in Winter, 1 pm \$
- 21 Webelos – Geologist, 10 am \$
- 22 Adult Natural History Series – Michigan Geology, 1 pm \$
- 29 Animals Tracks & Signs, 1 pm \$

FEBRUARY

- 5 Coyotes, Foxes & Wolves in Michigan, 1 pm \$
- 11 Winter Search Party – Looking for Insects, 1 pm \$
- 12 Preschool Nature Club – The Valentine Bears, 1 pm \$
- 18 Prep Your Team for Science Olympiad, 10 am & 1 pm \$
- 19 Prep Your Team for Science Olympiad, 1 pm \$
- 26 Adult Natural History Series – Wildlife Winter Survival, 1 pm \$

Interpretive programs are for families and individuals, unless stated otherwise. Families and individuals are welcome to attend scout programs. Programs for groups are available at other times by appointment. Call the desired center. A Metroparks vehicle entry permit and registration fee are required for all programs. Persons with mobility, visual, hearing or other special needs, including limited English proficiency, who need assistance to participate in any of these programs should contact the appropriate center at least 72 hours prior to the program.



HURON-CLINTON metroparks

ADMINISTRATIVE OFFICES

13000 High Ridge Drive, Brighton MI 48114-9058
 Phone or TTY: 810-227-2757 or 800-47-PARKS
www.metroparks.com
 Email: mail@metroparks.com



BOARD OF COMMISSIONERS

JOHN C. HERTEL <i>Governor Appointee</i>	JOHN E. LA BELLE <i>Livingston County</i>	HARRY E. LESTER <i>Wayne County</i>
ROBERT W. MARANS <i>Macomb County</i>	ANTHONY V. MARROCCO <i>Washtenaw County</i>	TIMOTHY J. MCCARTHY <i>Governor Appointee</i>
JOHN P. MCCULLOCH <i>Oakland County</i>		

STAFF OFFICERS

DAVID C. MOILANEN <i>Director</i>	GREGORY J. ALMAS <i>Deputy Director</i>
GEORGE PHIFER <i>Executive Secretary</i>	DAVID L. WAHL <i>Controller</i>

Huron-Clinton Metroparks News is a quarterly publication of the Huron-Clinton Metroparks.

DENISE SEMION <i>Editor</i>	CRISTIN PERRY <i>Staff Writer</i>
--------------------------------	--------------------------------------

DELHI METROPARK

(Park Office at Hudson Mills Metropark)
 734-426-8211 or 800-477-3191

DEXTER-HURON METROPARK

(Park Office at Hudson Mills Metropark)
 734-426-8211 or 800-477-3191

HUDSON MILLS METROPARK

8801 North Territorial Road, Dexter, MI 48130
 734-426-8211 or 800-477-3191

HURON MEADOWS METROPARK

8765 Hammel Road, Brighton, MI 48116
 810-231-4084 or 800-477-3193

INDIAN SPRINGS METROPARK

5200 Indian Trail, White Lake, MI 48386
 248-625-6640 or 800-477-3192

KENSINGTON METROPARK

2240 West Buno Road, Milford, MI 48380-4410
 248-685-1561 or 800-477-3178

LAKE ERIE METROPARK

32481 West Jefferson, Brownstown, MI 48173
 734-379-5020 or 800-477-3189

LOWER HURON METROPARK

17845 Savage Road, Belleville, MI 48111
 734-697-9181 or 800-477-3182

METRO BEACH METROPARK

31300 Metro Parkway, Mount Clemens, MI 48046-6905
 586-463-4581 or 800-477-3172

OAKWOODS METROPARK

(Park Office at Lower Huron Metropark)
 734-782-3956 or 800-477-3182

STONY CREEK METROPARK

4300 Main Park Road, Shelby Township, MI 48316-4907
 586-781-4242 or 800-477-7756

WILLOW METROPARK

(Park Office at Lower Huron Metropark)
 734-697-9181 or 800-477-3182

WOLCOTT MILL METROPARK

63841 Wolcott Road, Ray, MI 48096-2434
 586-749-5997 or 800-477-3175

PARK ENTRY

Annual \$25/Senior \$15 • Daily \$5



Return Service Requested

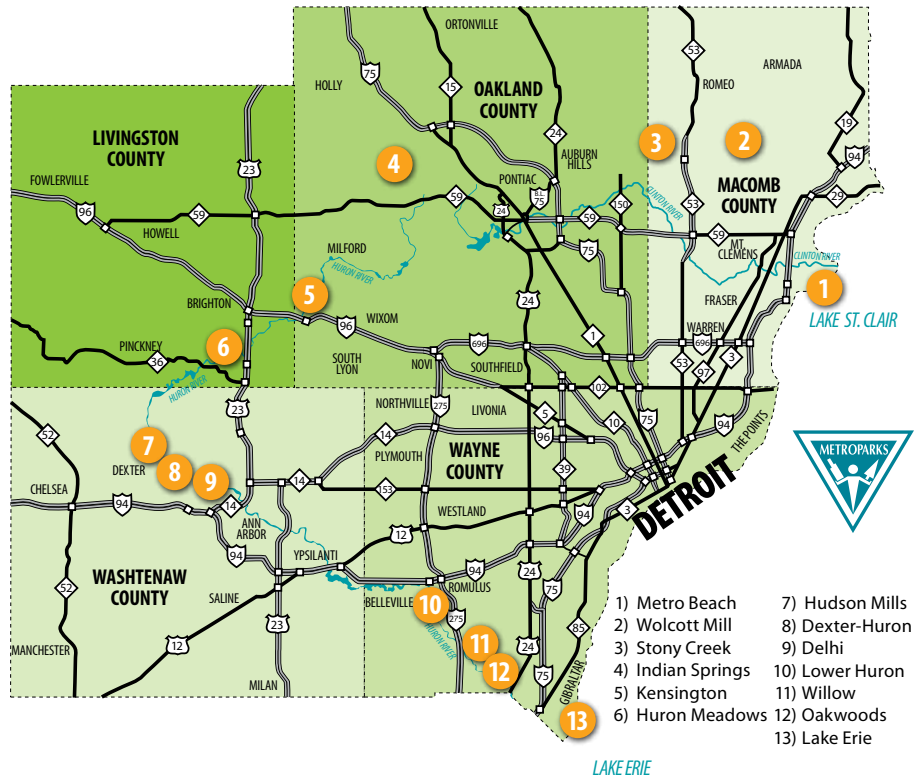
GET OUT and play

PRSR STD
 U.S. POSTAGE

PAID

HURON-CLINTON
 METROPOLITAN
 AUTHORITY

MOVING?
 Please send us your
 address change.



MISSION statement

The Huron-Clinton Metropolitan Authority, a regional park system created in 1940 by the citizens of Southeast Michigan, provides excellent recreational and educational opportunities while serving as stewards of its natural resources. Our efforts are guided by the belief that the use of parks and exposure to natural environments enhance society's health and quality of life.